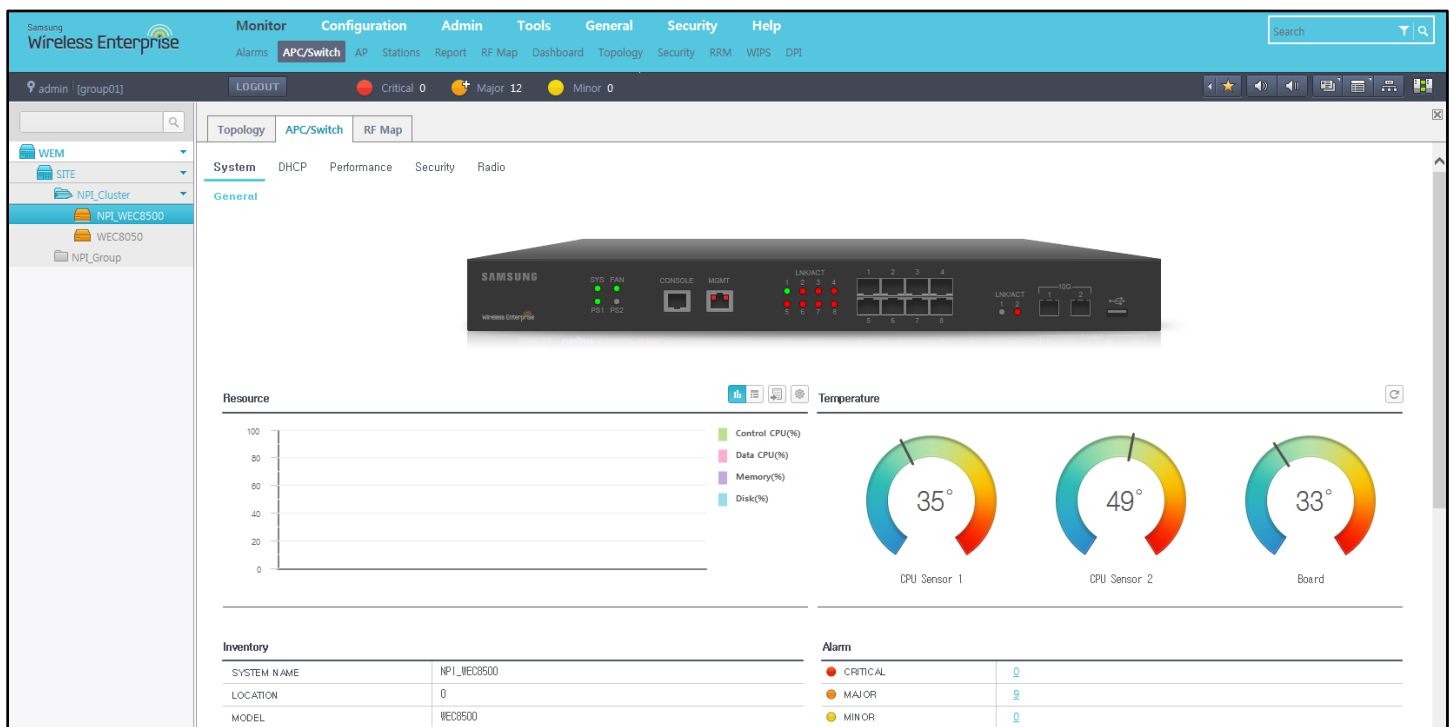




Bulletin No.: WLAN_012_WEM_v3.1.8

July 31, 2015

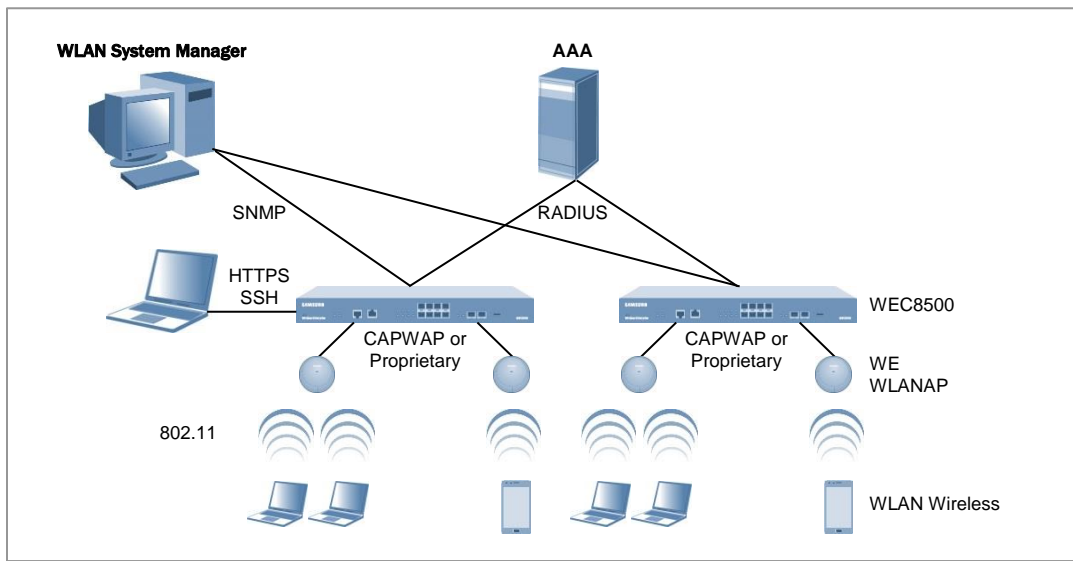
New Wireless Enterprise Manager (WEM) Server Software Available Now!



SAMSUNG Electronics America is pleased to announce the Wireless Enterprise Manager (WEM) server software for enterprise. This new release completes the SAMSUNG product portfolio for the enterprise class wireless WLAN market.

PRODUCT OVERVIEW

The SAMSUNG Wireless Enterprise Manager (WEM) is a software tool for managing multiple AP Controllers and APs that construct your enterprise WLAN. The WEM provides all of the monitoring, security, management, and reporting functions of your combined enterprise WLAN equipment in a convenient single web-based GUI administration interface.



An example of WEM Configuration within an enterprise WLAN

General Management

The SAMSUNG WEM extends the functions of your SAMSUNG WLAN AP Controllers and APs, allowing for overall process monitoring, resource monitoring, self-server diagnosis, monitoring of each network component, database management, and scheduling activity management.

Security Management

The SAMSUNG WEM provides user access history, account/password management, and connections to the built in security features of the AP Controllers and APs.

Fault Management

The SAMSUNG WEM is capable of providing status information for various faults of APCs and APs in real-time and is able to deliver notifications of various types remotely to the WLAN network administrator and management. In addition to real time fault monitoring, the WEM logs fault history and statistics of faults.

PRODUCT OVERVIEW

Performance Management

Employing real-time monitoring and historical statistics data, the WEM continually collects data and creates a database of the performance of the overall WLAN network as well as its individual components.

Configuration Management

The WEM is an essential tool for an enterprise class WLAN network. All elements of the wireless network are able to be accessed, administered, and configured by employing a single point of access via a web GUI. Through the GUI the administrator or manager may see the current settings and configuration information of each device without directly connecting to each device. The WEM provides overall system registration, individual setting modification, common setting templates, viewing current setting status, and firmware management.

RF Mapping

The WEM allows visibility of the current physical RF status of APs by area, building, and floor through the mapping functions. In addition to spectrum analysis of individual APs, the WEM provides the current location and RF information of APs and wireless terminals including the strength of the signals by location.

WLAN Monitoring

By continually monitoring the present status of WLAN services, the SAMSUNG WEM checks for illegal AP activity and monitors the physical environment in real-time for RF interference. All of this data is captured and is able to be viewed through an administrator dashboard as well as formal electronic or print reports.

WLAN Troubleshooting

The following tools are available within the SAMSUNG WEM to analyze the cause if a fault occurs:

- **Spectrum analysis:** Measures interference from the non-Wi-Fi devices in the physical environment. By analyzing wireless and RF signals in real time the WEM provides information to rapidly solve the problem by checking the cause and attempting to determine the type and location of the interference.
- **VQM: Voice Quality Management:** By collecting and managing voice call quality information (MOS, Jitter and Delay) the SAMSUNG WEM identifies areas where voice data is being affected.
- **Packet capture:** Real-time packets can be captured by interface, port, and protocol on demand throughout the entire WLAN network from within the SAMSUNG WEM.

Hardware Requirements & Software Compatibility

WEM Server Specifications

CPU	3.0 GHz (Intel Xeon processor) or higher is recommended
Main Memory	16 GB or higher is recommended
Hard Disk	300 GB or higher is recommended
Drive	DVD-ROM drive
Monitor	17-inch color monitor
LAN Card	10/100 Base-T (RJ-45 connector)

WEM Client Specifications

CPU	3.0 GHz (Pentium IV processor) or higher
Main Memory	2 GB or higher
Hard Disk	100 GB or higher
Monitor	Color monitor w/ 1280×1024 resolution
LAN Card	10/100 Base-T (RJ-45 connector)

Compatible SAMSUNG APC and AP software versions:

AP Controller Model	AP Controller Software	300 Series Access Points	400 Series Access Points
WEC8500 Controller	wec8500_3.1.8R	weafama_3.1.8R	weafamb_3.1.8T1
WEC8050 Controller	wec8050_3.1.8R	weafama_3.1.8R	weafamb_3.1.8T1

NOTE: When upgrading to V3.1.8R make sure to use the compatible Access Point software.

SAMSUNG Wireless Enterprise Security (WES) Software Compatibility

Version: WIPS_1.0.13.R

Pricing and Ordering

SAMSUNG Sales Engineers will review all sales orders and configuration.

SAMSUNG WLAN Price List

Description	Item Code	US List Price	CAN List Price
WLAN Manager License for 1~50 devices (AP, APC, Ethernet switch)	WDS-LM50/STD	\$3,256.00	CAD 3,386.00
WLAN Manager License for 51~100 devices (AP, APC, Ethernet switch)	WDS-LM100/STD	\$5,531.00	CAD 5,752.00
WLAN Manager License for 101~500 devices (AP, APC, Ethernet switch)	WDS-LM500/STD	\$22,747.00	CAD 23,657.00
WLAN Manager License for 500~1K devices (AP, APC, Ethernet switch)	WDS-LM1K/STD	\$42,422.00	CAD 44,119.00
WLAN Manager License for 1K~3K devices (AP, APC, Ethernet switch)	WDS-LM3K/STD	\$85,458.00	CAD 88,876.00

Certification & Training

SAMSUNG Electronics America will provide technical support to authorized dealers based on the following two requirements:

1. Technical certification on the SAMSUNG WEM Software:

- Personalized SAMSUNG Sales Engineer led certification course included with purchase of WEM.
- Prerequisite: SAMSUNG Wireless LAN Certification.

2. Purchase WLAN SAMSUNG Assurance:

WLAN SAMSUNG Assurance provides an Authorized Dealer with access to Technical Support and access to service packs and bug fixes. Dealer must purchase WLAN SAMSUNG Assurance on a per site basis. WLAN SAMSUNG Assurance agreement starts the date of purchase.

Documentation

DOCUMENTS	LOCATION
System & General Description Documents	PRM: Content > Sales Material > Sales and Marketing > General Description Wireless Enterprise Operations Support System > Knowledgebase
User Guides & QRGs for end users	PRM: Content > Sales Material > Sales and Marketing > User Guides
Technical Docs and Manuals.	Wireless Enterprise Operations Support System > Knowledgebase

Warranty Information

Software: There is no warranty on software unless the SAMSUNG Assurance agreement is active for this site. Patches and/or bug fixes will be available through SAMSUNG Technical Support.

If there are any questions regarding this notice, please contact your Regional Sales Manager or SAMSUNG Technical Support via email at support@we-operations.com