



Bulletin No.: WLAN\_003\_New WEC8050 Access Point Controller

May 29, 2014

## New WEC8050 Access Point Controller

Samsung is pleased to announce the new WEC8050 Access Point Controller for medium and small enterprises. This new release further broadens Samsung product portfolio for the enterprise class wireless WLAN market.

### PRODUCT OVERVIEW

The WEC8050 APC allows dealers to be more cost competitive in the SMB WLAN space. The WEC8050 comes out of the box with a license for five (5) access points. Expand to a maximum of 75 APs supporting up to 1500 clients (users).

## WEC8050 APC



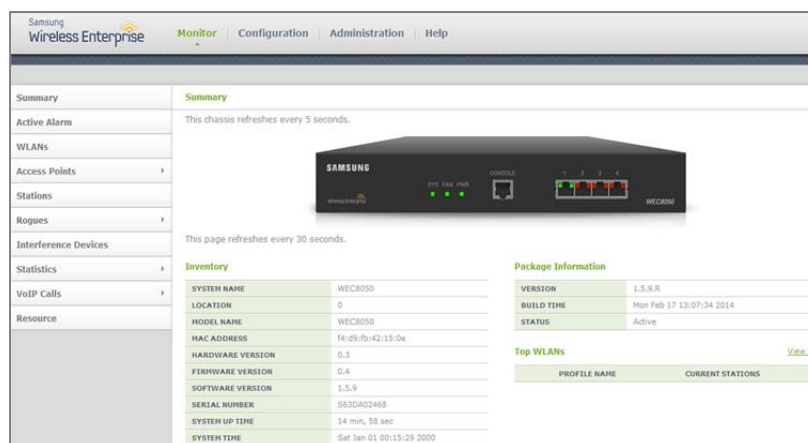
## Access Point Controller

The Samsung WLAN solution uses the industry standard IEEE802.11n, while at the same time incorporating technology adopted from the recent Samsung investment in LTE. This addresses the specific needs of voice and video without impacting data throughput. Seamless automatic handover when moving between Access Points (APs) removes the burden on devices and risk of disruption while application of Crystal HD Voice ensures the best possible speech quality and wireless service regardless of the type and number of devices in use.

The WEC8050 APC addresses SMB customers supporting up to 1500 user with a maximum of 75 access points.

Samsung Access Point Controller Comparison		
Capacities	APC 8500	AP 8050
Maximum number of Access Points (AP)	500	75
Maximum number of AP Groups	50	50
Maximum number of APs per AP Group	500	75
Maximum number of WLANs	255	255
Maximum number of users (clients)	10K	1500
Maximum number of users (clients) per AP	127	127
Maximum Number of VLANs per APC	1024	128
Maximum number of VLANs per SSID	50	50
Maximum number of SSID	240	240
Maximum Number of SSID (WLAN) per AP	16	16
Maximum Number of MAC Addresses	12K	12K
Maximum Number of IPv4 Unicast Routers	10K	10K
Firewall Throughput	20 Gbps	1.5 Gbps
Software Version	V1.5.9T1 2014.03.07	V1.5.9T1 2014.03.07

WEC8050 uses the same convenient and easy to use System Administration GUI as the WEC8500



## WEA300 Series Access Points

The WEC8050 supports the Samsung WEA300 Series access points.



## PRICING &amp; ORDERING

SAMSUNG WLAN Price List (5/25/2014)					
	Name	Description	Code	US List Price	CAN List Price
AP	WEA302i	2x2 MIMO, 2 streams, dual Radio, internal antenna, Monitoring including Ceiling Mounting kit	WDS-A302CI/XAR	\$689	\$717
	WEA303i	3x3 MIMO, 2 streams, dual Radio, internal antenna, Monitoring including Ceiling Mounting kit	WDS-A303CI/XAR	\$1,090	\$1134
	WEA303e	3x3 MIMO, 2 streams, dual Radio, external antenna, Monitoring including Ceiling Mounting kit	WDS-A303CE/XAR	\$1,090	\$1134
	Mounting Kit	Wall Mounting Kit	WDS-300WK/XAR	\$30	\$31
		Ceiling Mounting kit	WDS-300CK/XAR	\$30	\$31
	Cable Hole Sheet Guide	Cable Hole Sheet Guide for WEA 300 Series AP (5 per set)	WDS-ACHGD5/XAR	\$150	\$156
	AC Adaptor	External Power Supply for WEA 300 Series APs	WDS-AADT/XAR	\$70	\$73
APC	WEC8500	Support Max 500AP, H/W	WDS-C8500/XAR	\$14,900	\$15,496
		Support Max 500AP, H/W Power Redundancy	WDS-C8500P/XAR	\$15,900	\$16,536
	WEC 8500 Access Point License	1~25 AP License for WEC8500	WDS-LC8025/STD	\$5,900	\$6,136
		26~50 AP License for WEC8500	WDS-LC8050/STD	\$10,900	\$11,336
		51~100 AP License for WEC8500	WDS-LC8100/STD	\$20,900	\$21,736
		101~250 AP License for WEC8500	WDS-LC8250/STD	\$43,900	\$45,565
		251~500 AP License for WEC8500	WDS-LC8500/STD	\$79,900	\$83,096
	WEC8050	Support Max 75AP, H/W (support for 5 APs included)	WDS-C8050/XAR	\$2,390	\$2,486
	WEC8050 Access Point License	5AP License for WEC 8050	WDC-LC8S05	\$810	\$842
		10AP License for WEC 8050	WDC-LC8S10	\$1,350	\$1,404
		25AP License for WEC 8050	WDC-LC8S25	\$3,150	\$3,276
		50AP License for WEC 8050	WDC-LC8S50	\$5,970	\$6,209
	Power Supply	WEC8500 Power Supply (spare/redundant)	WDS-CPWR85/XAR	\$1,477	\$1,536
	FAN Tray	WEC8500 FAN Tray	WDS-CFAN85/STD	\$292	\$304
Service Products	Samsung Assurance	WLAN Samsung Assurance (1 year) Provides Authorized Dealer with access to Technical Support and service packs/ bug fixes. (Required per site)	NES-WLAN-SW	10% of List License Cost	10% of List License Cost
	Training	WLAN Instructor Led	NES-WLAN-IN	\$ 2,500	\$2,600
		Sales Training On-line test	NES-WLAN-SALES	\$ 100	\$104
	WEC8050 Demo Kit	WEC8050 Demo Kit (Controller, 2 302i AP's, 2 303i AP, 1 303e AP) NFR – Not for resale	F-B-WLAN_DEMO	\$2,175	\$2,262

## ORDER & LICENSE PROCESS

The Order and License Process is as follows.

Step 1	<p><b>Site Configuration</b></p> <p>Dealer works with Samsung Sales Engineers to develop a Site Configuration Order (excel spread sheet format). This configuration order sheet must include:</p> <ul style="list-style-type: none"> <li>a. Site Information</li> <li>b. Hardware List</li> <li>c. License request</li> <li>d. Assurance</li> <li>e. Profession Services (optional)</li> </ul> <p>Sales Engineer will send the dealer a pdf copy of this configuration order.</p>
Step 2	<p><b>Place the Order</b></p> <p>Dealer Submits a PO with a pdf copy of the Site Configuration Order attached to Samsung Customer Service.</p>
Step 3	<p><b>Samsung Delivers License Key</b></p> <p>Once Samsung processes the order, Customer Service will email the license key to the email address provided on the Site Configuration Order. Technician installs the license on the APC</p>
Step 4	<p><b>Invoice sent</b></p> <p>Invoice is sent the same date the license is emailed.</p>
Step 5	<p><b>Samsung Assurance</b></p> <p>The Samsung Software Assurance Certificate is sent to the Dealer. The standard term for Software Assurance (SA) is one year. However for the first order of SA for a site, the initial term is set for 15 months. All subsequent terms are 12 months.</p>

## DOCUMENTATION

The following Samsung WLAN technical documents are available on GSBN for download > Communication, Technical Support, Technical Manuals WE

- WEC 8050 System Description
- WEC8500WEC8050 APC Maintenance Manual
- WEC8500WEC8050 APC Operation Manual
- WEC8500WEC8050 System Message Description

## TRAINING & SUPPORT POLICY

Samsung Telecommunications America will provide technical support to authorized dealers based on the following two requirements.

### 1. Technical certification on the Samsung WLAN product.

Steps to Certification:

1	<p>Pass a perquisite test to qualify for a seat in the WLAN Certification Course. Students should have knowledge of these aspects of data networking and wireless technology:</p> <ul style="list-style-type: none"> <li>WLAN Standards (802.11)</li> <li>Radio Channels and Frequencies</li> <li>Wireless Security</li> <li>Access Control List</li> <li>Basic Networking Concepts</li> </ul> <p>Recommended Reference Books for WLAN Prerequisite Test material:</p> <ul style="list-style-type: none"> <li>CCENT Study Guide: Exam 100-101 by Todd Lammle</li> <li>TCP/IP Protocol Suite by Behrouz Forouzan</li> </ul> <p>There is no charge for the WLAN Perquisite test. Log into Samsung Academy to register for the test.</p>
2	<p>Pass the Samsung WLAN Administrator Instructor Led Course.</p> <p><b>Course Number:</b> NES-WLAN-ADMIN</p> <p><b>Cost per person:</b> \$1500 US</p> <p><b>Description:</b> This is a 3 day instructor led classroom course with presentations and hands on training using the Samsung WLAN products.</p> <p><b>Course Content:</b> Hardware over view of APCs and APs, Package Upgrade, APC Network Deployment Considerations, Remote AP management Considerations, APC Administration, 802.11 and Radio Parameters, Radius, Redundancy and Troubleshooting.</p> <p><b>Certification:</b> Samsung WLAN Administrator Certification</p> <p><b>Test Length:</b> 4 hours to complete a series of labs and multiple choice questions. Total points = 100. A passing grade is 80% or higher.</p> <p><b>Prerequisite:</b> Pass the Samsung WLAN Perquisite Test</p>

**Note:** If you are already attended the Samsung WLAN Certification for the WEC8500 and WEA302i AP, then you are grandfathered over to include the WEC8050 APC.

### 2. Purchase WLAN Samsung Assurance

WLAN Samsung Assurance (1 year) Provides Authorized Dealer with access to Technical Support and access to service packs and bug fixes. Dealer must purchase WLAN Samsung Assurance on a per site basis. WLAN Samsung Assurance agreement starts the date of purchase.

## WARRANTY INFORMATION

### Software

There is no warranty on software unless the WLAN Samsung Software Assurance agreement is active for this site. Patches or bug fixes will be available through Technical Support.

### Hardware

WLAN hardware comes with a two (2) year warranty from purchase date.

*If there are any questions regarding this notice, please contact your Regional Sales Manager or Samsung Technical Support via email at [we.support@samsung.com](mailto:we.support@samsung.com).*