

# OfficeServ™ Device Manager

**USER GUIDE**



## Revision History

EDITION	DATE OF ISSUE	REMARKS
01 0	1.2011	First Release

### Samsung Telecommunications America

Every effort has been made to eliminate errors and ambiguities in the information contained in this guide. Any questions concerning information presented here should be directed to SAMSUNG TELECOMMUNICATIONS AMERICA, 1301 E. Lookout Dr., Richardson, TX 75082, and telephone 800-876-4782. SAMSUNG TELECOMMUNICATIONS AMERICA disclaims all liabilities for damages arising from the erroneous interpretation or use of information presented in this guide.

### Publication Information

SAMSUNG TELECOMMUNICATIONS AMERICA reserves the right without prior notice to revise information in this publication for any reason. SAMSUNG TELECOMMUNICATIONS AMERICA also reserves the right without prior notice to make changes in design or components of equipment as engineering and manufacturing may warrant.

### Copyright 2011

#### Samsung Telecommunications America

All rights reserved. No part of this manual may be reproduced in any form or by any means—graphic, electronic or mechanical, including recording, taping, photocopying or information retrieval systems—without express written permission of the publisher of this material.

### Trademarks

**OfficeServ™** is a trademark of SAMSUNG Telecommunications America, L.P.  
WINDOWS 95/98/XP/2000/Vista are all trademarks of the Microsoft Corporation.

# TABLE OF CONTENTS

---

<b>CHAPTER 1. Introduction .....</b>	<b>1</b>
Introduction to the OfficeServ™ Device Manager (DM) .....	1
What can Device Manager do for me? .....	2
What are the Device Manager System Requirements? .....	3
<b>CHAPTER 2. Launching the OfficeServ DM.....</b>	<b>5</b>
Prior to Launching Device Manager .....	5
Enable the Downloads/File Download Option in Internet Security Settings .....	5
Enable Popups .....	6
Java Plug-In .....	6
Trusted Sites .....	7
Ports.....	7
Connecting to the Embedded Device Manager .....	8
Launching the OfficeServ Device Manager Client Application.....	10
Link Setup .....	11
Site List .....	11
Modem Options.....	13
Connect to an OfficeServ System Using the Client Application .....	14
<b>CHAPTER 3. OfficeServ Device Manager: Menu and Toolbar Options .....</b>	<b>17</b>
Screen Layout .....	17
OfficeServ Device Manager Menu Bar .....	18
System Menu.....	18
Site List .....	26
File Menu .....	28
Options Menu .....	29
Util Menu .....	34
Tab Menu .....	39
Help Menu.....	40
OfficeServ Device Manager Main Screen Toolbar Icon .....	41

<b>CHAPTER 4. Screen Layout .....</b>	<b>42</b>
<b>Programming Option List .....</b>	<b>42</b>
Port Base .....	42
Card Base .....	43
Page Search .....	44
<b>Programming Data Pane .....</b>	<b>47</b>
Information Bar .....	47
Program Data .....	47
Toolbar .....	48
Status Bar .....	49

# CHAPTER 1. Introduction

---

## Introduction to the OfficeServ™ Device Manager (DM)

The OfficeServ Device Manager is a Windows™ application that allows programming of the OfficeServ™ 7000 Series phone systems from a PC over a data network or modem. The Device Manager allows access to OfficeServ™ Main Machine Code (MMC) programming through an intuitive programming interface without the need to memorize MMC numbers or keypad programming procedures.

In addition to system programming the Device Manager also provides the ability to manage files on the system media card allowing administrators to upgrade main system software without the need for a media card reader. The Device Manager also allows downloading, uploading, and comparison of system databases as well as offline editing of stored databases.

Device Manager is available in two styles:

Embedded: On some systems the Device Manager application is embedded on the phone system processor card. The system is then accessed using a web browser to connect to the embedded application. This can be done over either a private network or a public network. The benefit to this method is that you are always using the correct Device Manager version to correlate to the system you are configuring.

Client: Systems that do not support the embedded Device Manager application can be accessed using a client version of Device Manager that resides on the technician's PC.

# What can Device Manager do for me?

## ➤ **Organize Site Connections**

Save connection properties for multiple phone systems for quick access with the Link Control.

## ➤ **Local and Remote Administration**

Connect via LAN, Internet, or modem to any OfficeServ™ 7000 Series system from anywhere.

## ➤ **Manage System Databases**

Download system databases to your PC for archiving or offline editing. Upload databases to the system to push large changes with minimal service downtime.

## ➤ **Manage Media Card Files**

View, add, or delete operating system files on the Media Card for your OfficeServ™ 7000 Series system to ease version upgrades for the processor and interface cards.

## ➤ **Compare Databases**

The Database Compare function helps you track changes between archives by detecting and displaying any differences between two saved databases.

## ➤ **Store Programming Favorites**

Bookmarks increase efficiency by allowing you to save a list of commonly used programming screens.

## ➤ **Search Menus**

The search feature greatly reduces headaches by allowing you to search for a programming option by MMC number, field name, or menu item name.

# What are the Device Manager System Requirements?

## ➤ Embedded Application – Browser Requirements

Web Browser	Version
Internet Explorer	6.0, 7.0 or 8.0

## ➤ Client Application – Minimum PC Requirements

H/W	Requirement	
PC	CPU	Pentium Iv or faster
	Main Memory	512 MBytes or more
	HDD Drive	At least 1 GBytes of free space
	OS	Microsoft Windows XP or newer
Modem	1,200~115,200 baud rate	

## ➤ Software Compatibility

The **embedded** application is compatible with the following systems and software versions:

System	Software Version
OfficeServ 7400	4.52 and higher
OfficeServ 7200 (MP20)	4.52 and higher
OfficeServ 7200 (MCP)	Not Supported
OfficeServ 7200-S	4.52 and higher
OfficeServ 7030	4.53 and higher
OfficeServ 7100	4.53 and higher

The **client** application can be used on OfficeServ 7000 series systems using software version 4.51 and lower.



**This page is intentionally left  
blank.**



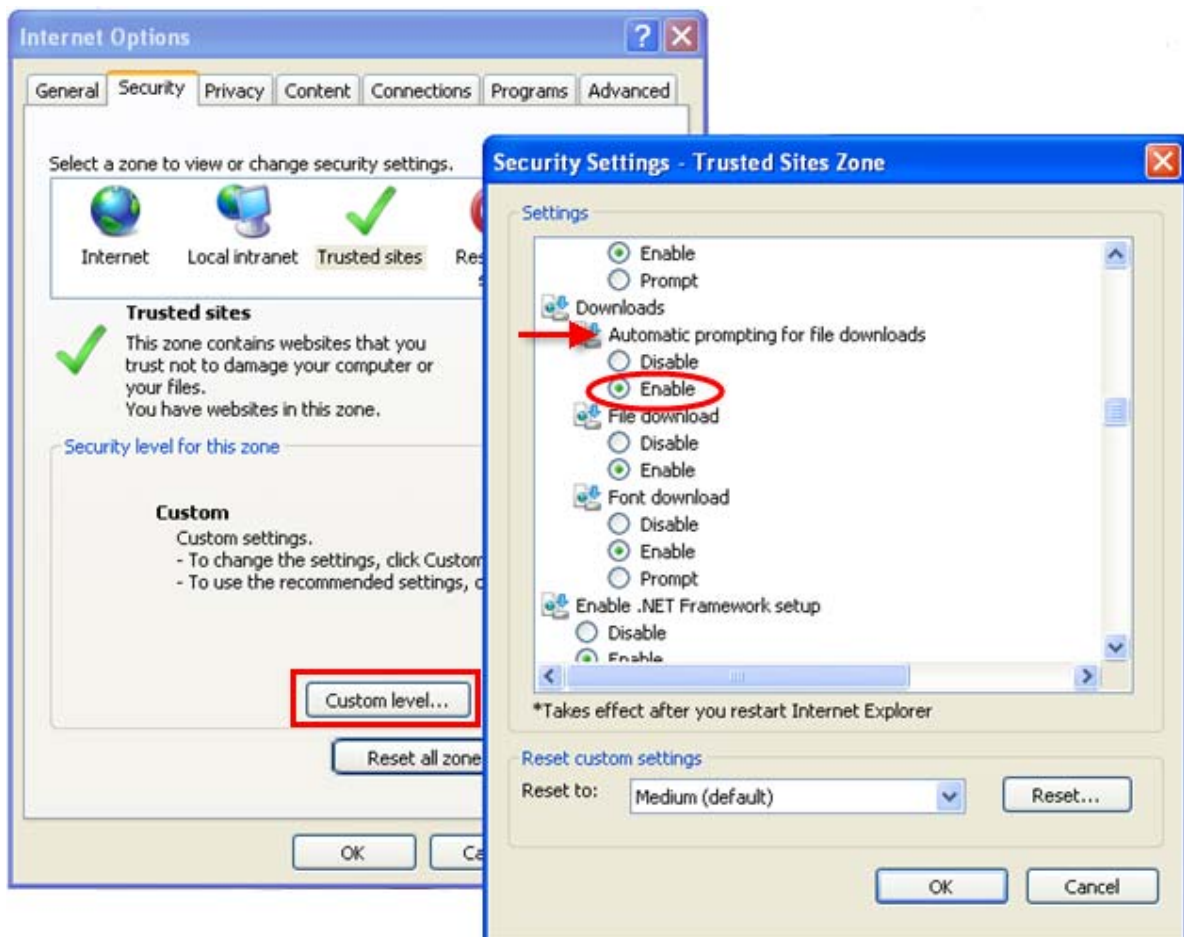
## CHAPTER 2. Launching the OfficeServ DM

### Prior to Launching Device Manager

Before you can successfully access an OfficeServ System using the embedded Device Manager via a web browser, there are a few things that need to be set or verified.

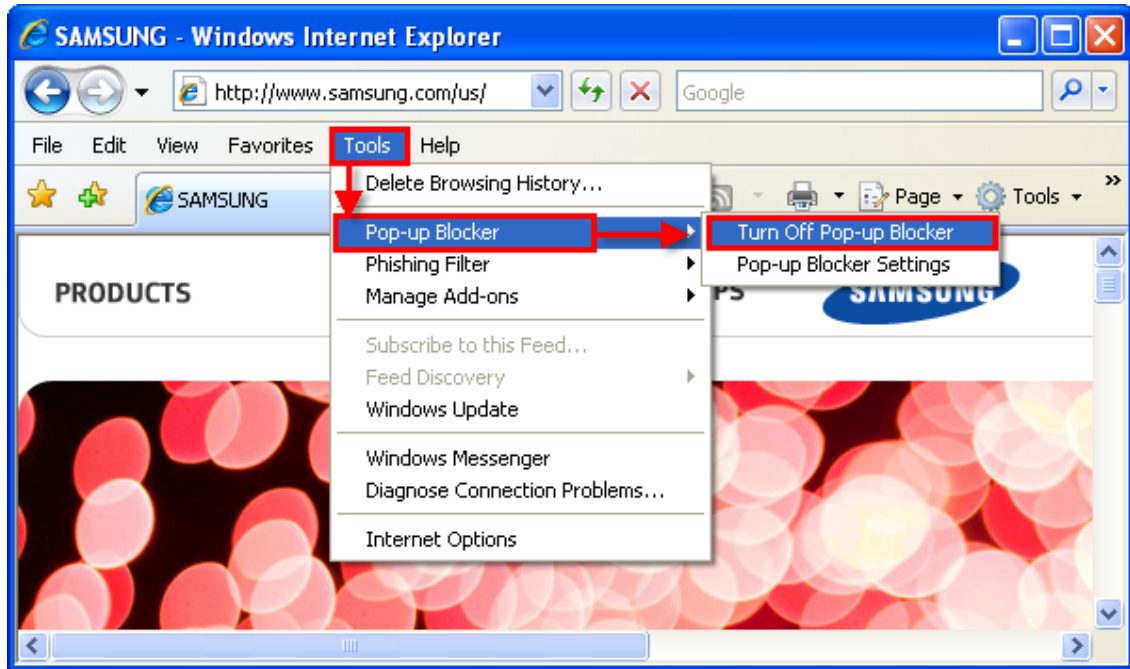
#### Enable the Downloads/File Download Option in Internet Security Settings

This setting can be found under the **Tools/Internet** Options menu in Internet Explorer. Select the **Security** tab and then the **Custom Level** button.



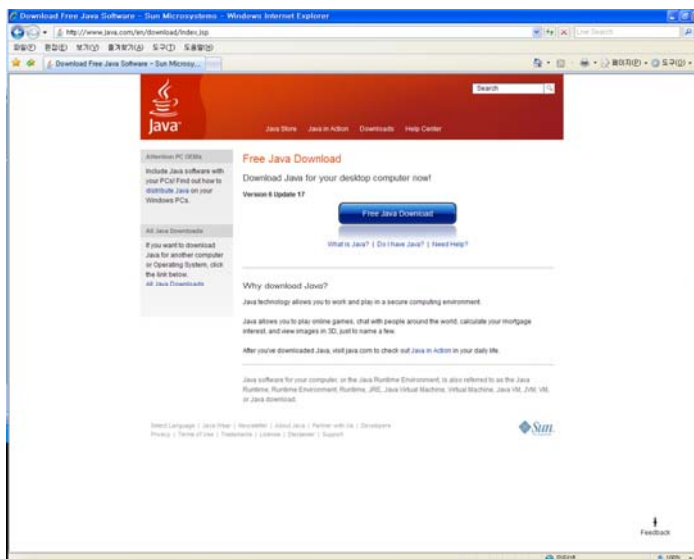
## Enable Popups

Device Manager will be launched in a pop-up window, therefore the pop-up blocker must be turned off in the web browser.



## Java Plug-In

Java Web Start Plugin should be installed to use OfficeServ DM. If it's not, you will be prompted to download it when you attempt to launch Device Manager.

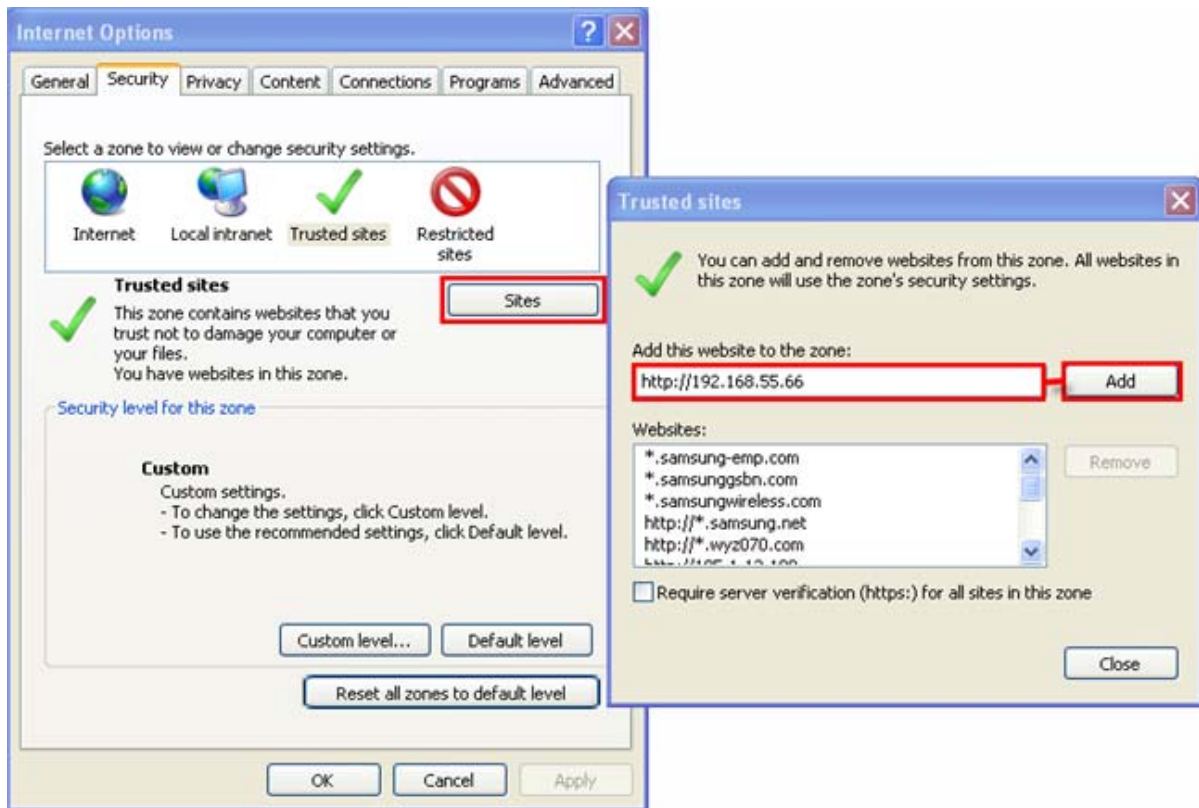


NOTE

JRE 6.23 or higher should be installed to use OfficeServ DM. If an old version of JRE (i.e., lower than the version 1.6) is installed, please remove it and replace with a new version.

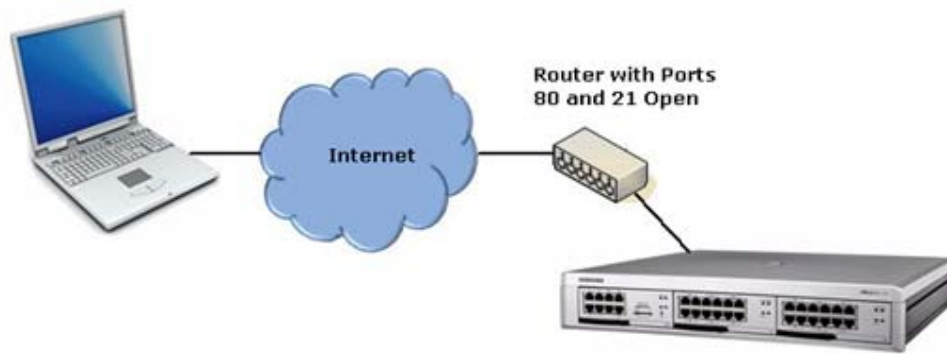
## Trusted Sites

If you have difficulty connecting to a site, you may need to add it to your browser's trusted sites.



## Ports

When using a public network to access an OfficeServ system with Device Manager, firewall ports 80 and 21 must be opened on the router.



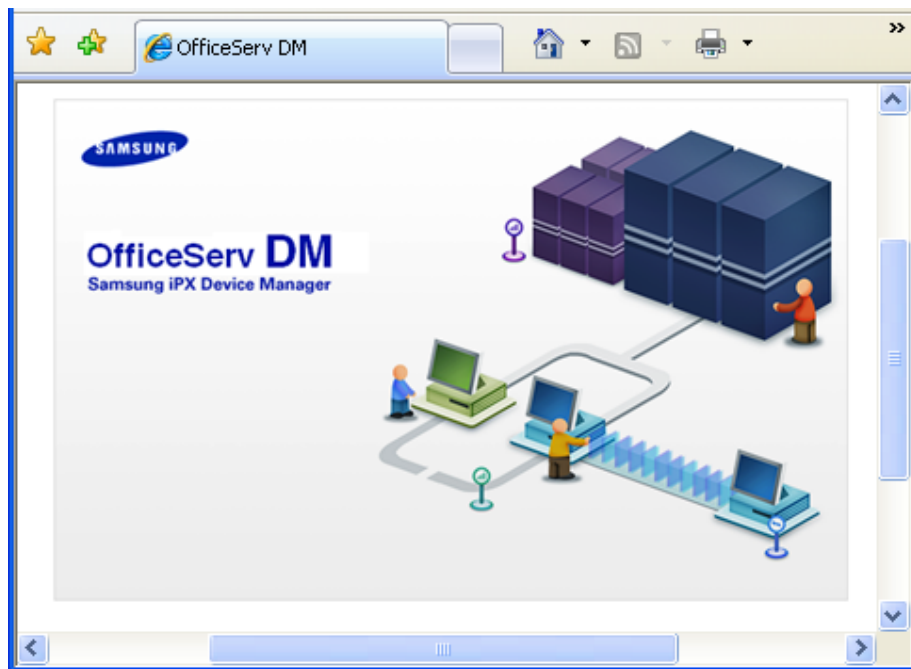
# Connecting to the Embedded Device Manager

Device Manager is launched with a web browser. Depending on the environment, one of the following addresses should be used to access the embedded Device Manager.

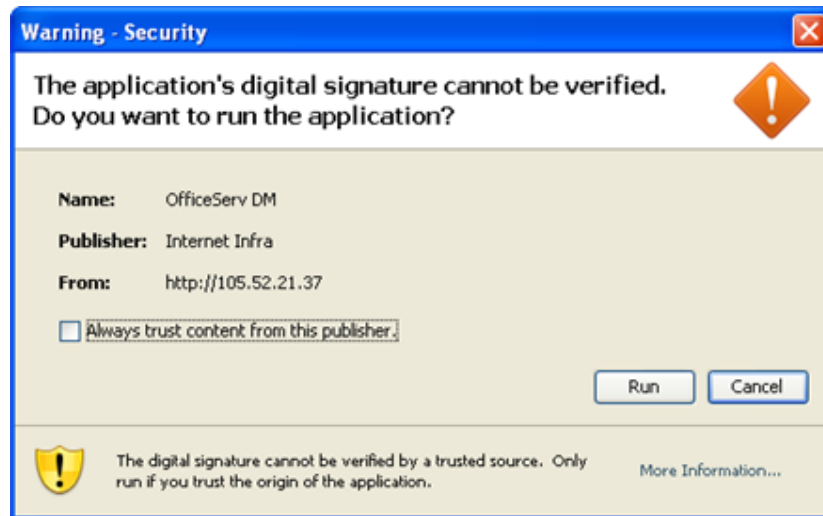
Environment	Command	Example
Private Network	http://OfficeServ System IP Address/dm/	http://192.168.45.56/dm/
Public Network with NAT Routing	http://OfficeServ System IP Address/dmp/ *	http://192.168.45.56/dmp/
Public Network without NAT Routing	http://OfficeServ System IP Address/dm/	http:// 192.168.45.56/dm/
MP20S Processor Card	https://OfficeServ System IP Address/dmp/ *	https://192.168.45.56/dmp/

\*Note: This option requires the IP address to be entered in the **Public** field of MMC 830.

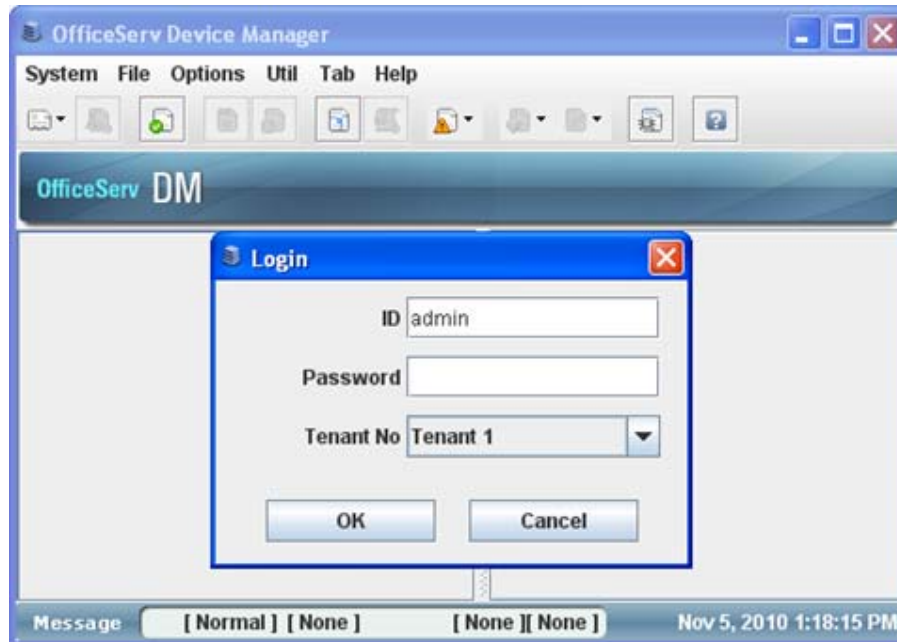
You should then see the following screen:



You may see the following warning screen. Simply click on the Run option if you do.

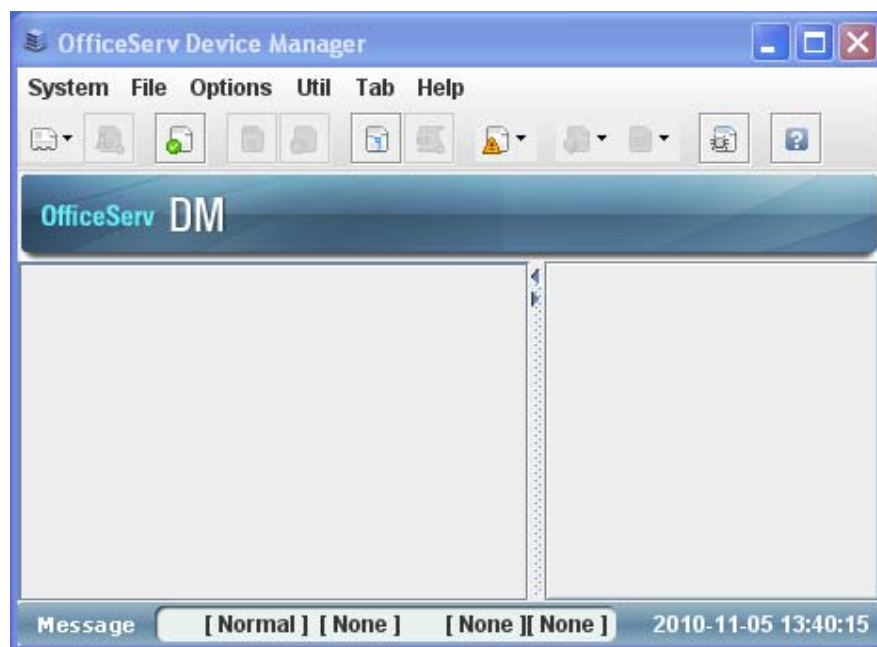


Device Manager will open in a separate window. This may take up to 15 seconds to open. The default Login ID is **admin** and the default password is **samsung**.



# Launching the OfficeServ Device Manager Client Application

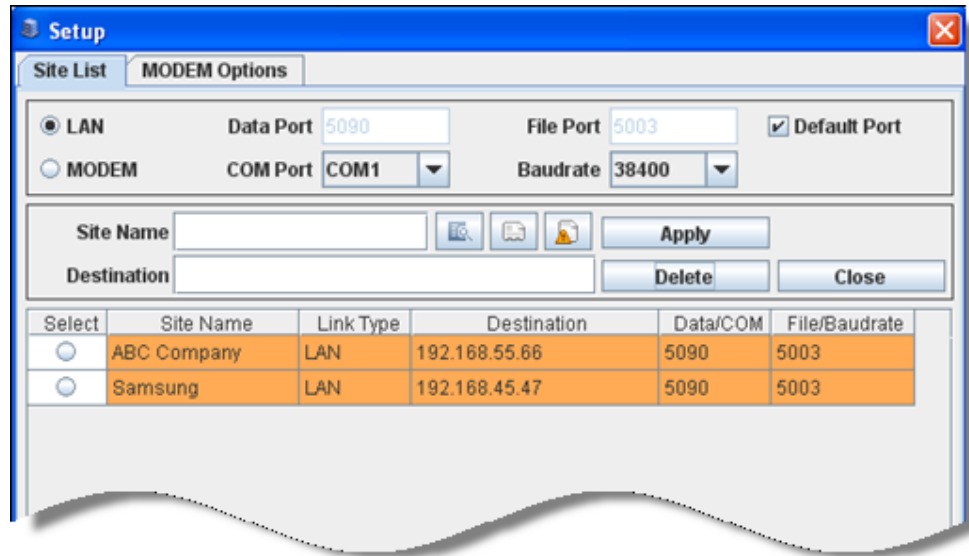
Unzip the file obtained from the Samsung GSBN website. The zip file will contain one file - OSDM.JAR file. This is the file used to launch Device Manager. For ease of use, we recommend placing this file on your desktop.



# Link Setup

The Link Setup window is a connection manager for your OfficeServ system connections. You must enter a site into the Site list before connecting to an OfficeServ System.

- Click on **[System]** => **[Link Control]**. The following screen is displayed.



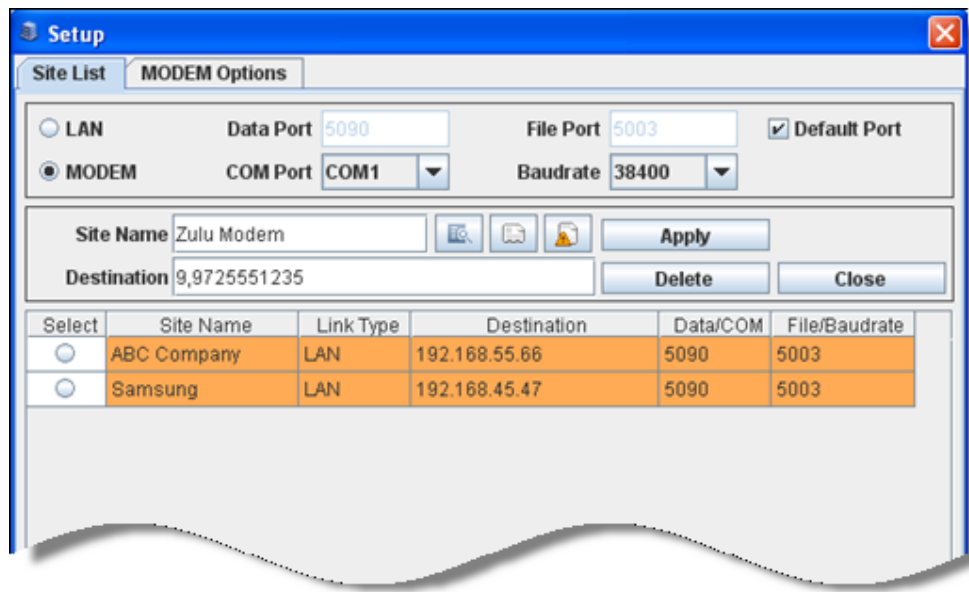
## Site List

The Site List allows you to add, edit, or delete site information as well as view data for all your stored connections.

Clicking the radio button for a site will cause the connection detail for that site to populate in the upper portion of the window. To edit the data, make your changes and then click **[Apply]**.

To create a new LAN site connection you must enter a few pieces of information:

- **Site Name** sets the name for the connection, which is used mainly for your reference.
- **Link Type** (top of screen) should be set to LAN, which is the default.
- **IP Address** sets the IP address to connect to the system on.
- **Default Port** sets the IP connection ports to use for this site. The default is 5090 for programming and 5003 for Media Card access. To set new values you must uncheck the Default Port checkbox.



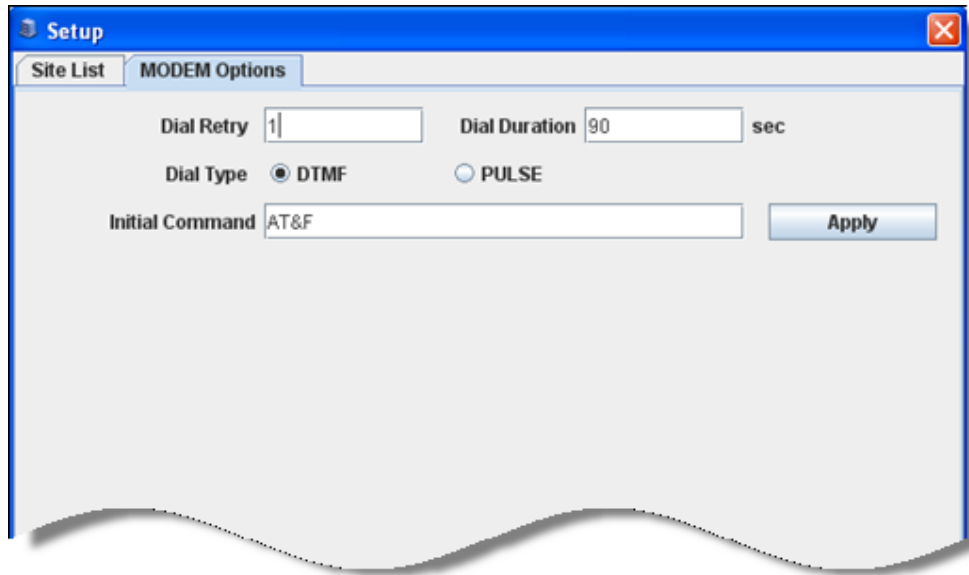
To create a new Modem site connection you must enter several pieces of information:

- **Site Name** sets the name for the connection, which is used mainly for your reference.
- **Link Type** (top of screen) should be set to MODEM.
- **COM Port** determines the port on your PC that the MODEM is connected to. This can be obtained in Windows XP by clicking [Start] → [Settings] → [Control Panel] → [Printers and Other Hardware] and double-clicking "Phone and Modem Options". Once loaded click the **Modems** tab and the COM port is listed under the column **Attached To**.
- **Baudrate** determines the connection speed. This setting defaults to 38400.
- **Destination** is the phone number to dial after accessing the MODEM to connect to the system.



## Modem Options

The Modem Options tab allows you to set configuration parameters for MODEM connections. Once changes have been made you must click **[Apply]** to save them.

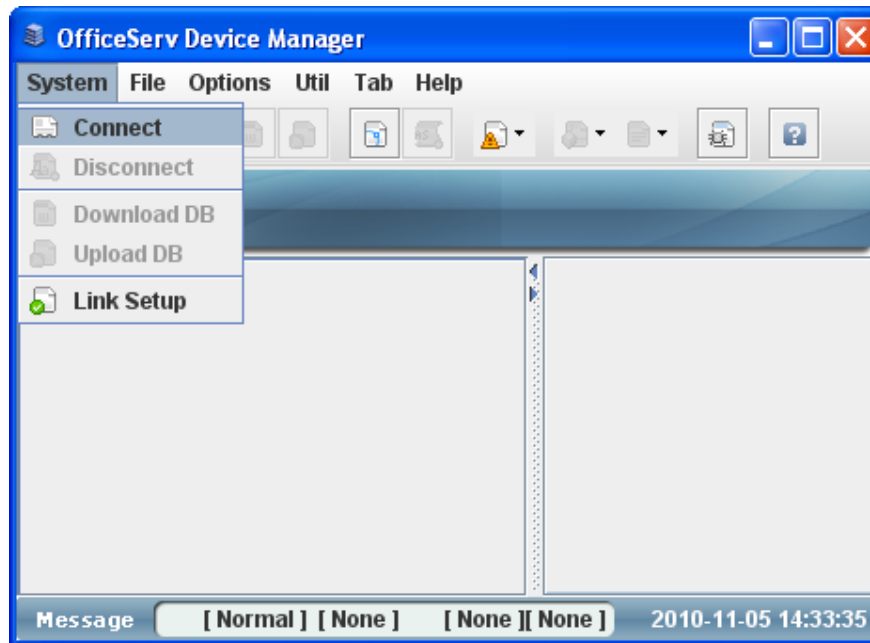


- **Dial Retry** sets the number of outcall attempts to make. The default is 1, which means that if the call fails or isn't answered there will be no more attempts made.
- **Dial Duration** sets the length of time to wait for a connection to be made. The default setting is 90 seconds, which means that if a connection isn't established within 90 seconds of seizing the trunk the call will be considered a failed attempt.
- **Dial Type** sets whether the MODEM should dial using DTMF or Pulse dialing.
- **Initial Command** sets the initialization string to use to setup the MODEM call. The default is AT&F, which is compatible with 99% of MODEMs manufactured since 1990. It is recommended that you leave this setting as is unless instructed to change it by the MODEM manufacturer.

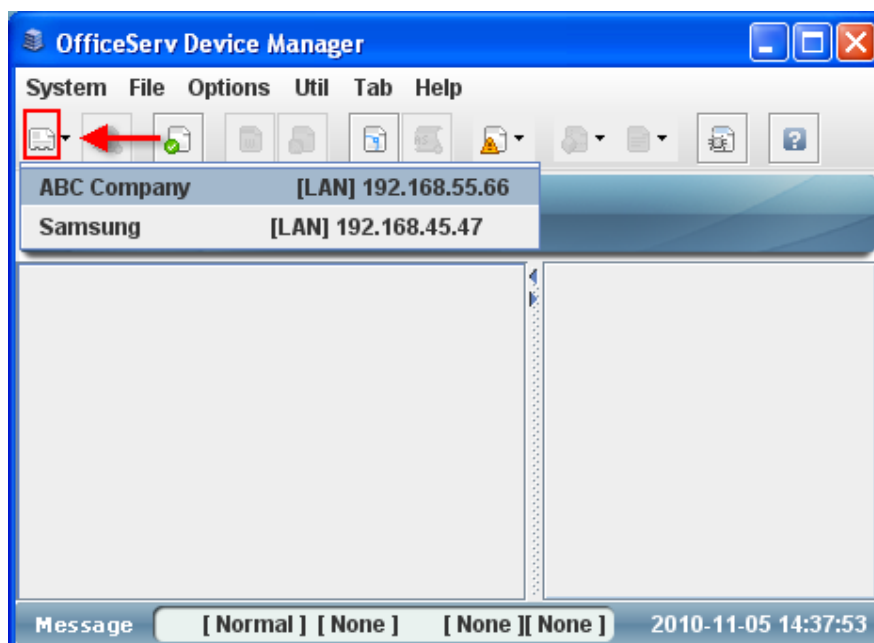
## Connect to an OfficeServ System Using the Client Application

There are a couple of different methods you can use to connect to a system:

1. Click on **[System]** → **[Connect]**.

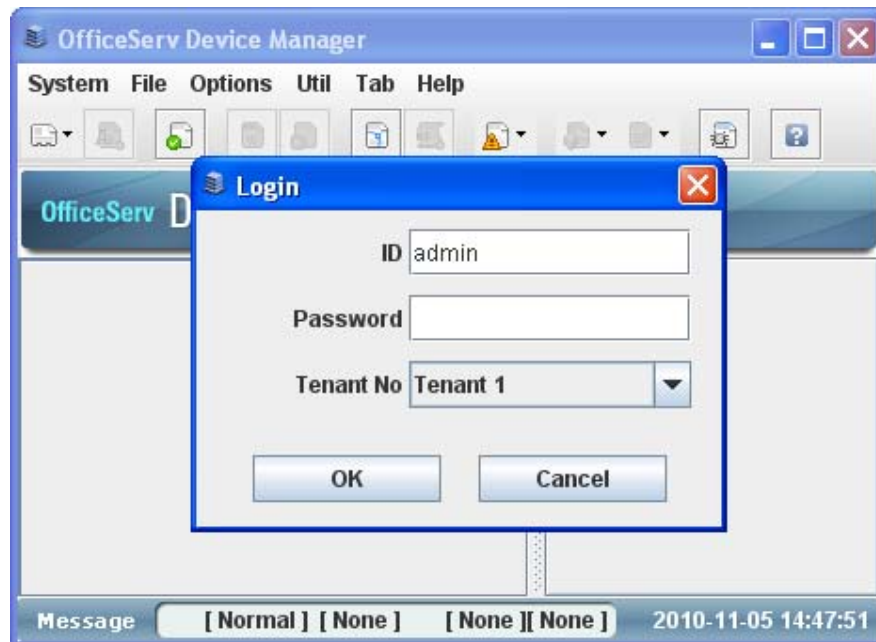


2. Use the Connect icon to connect to the last system you connected to. To connect to a different system, use the arrow on the right side of the connect icon to display a list of available systems.



You'll be prompted to enter the ID and password. Default values are:

- ID = Admin
- Password = samsung



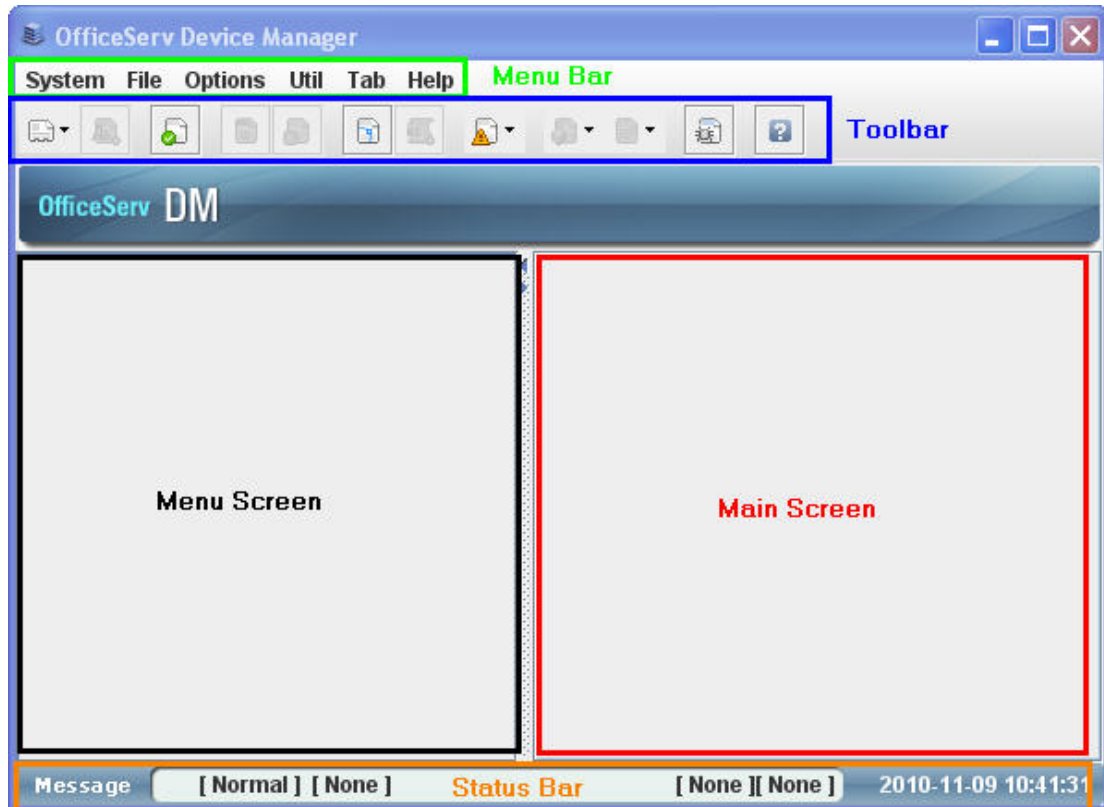


**This page is intentionally left  
blank.**

## CHAPTER 3. OfficeServ Device Manager: Menu and Toolbar Options

### Screen Layout

The main screen of the OfficeServ Device Manager is shown below.



Screen Layout	Details
Menu	System Main Menu, used to access Device Manager features
Toolbar	Used for quick access to the most commonly used features
Main Screen	When connected to a live system or offline database, this area will list all available programming options for the system or database.
Menu Screen	Displays system programming options
Status Bar	Displays information about current connections and other status data

# OfficeServ Device Manager Menu Bar

The menu bar is used to access general functions of the Device Manager. The menu works just like any other Windows™ application menu bar. Click a title heading to see the options contained in that menu.



## System Menu



### ➤ Connect

The Connect menu option attempts to connect to the OfficeServ™ system defined in the currently active connection. The active connection is defined by the Link Setup window as detailed below.

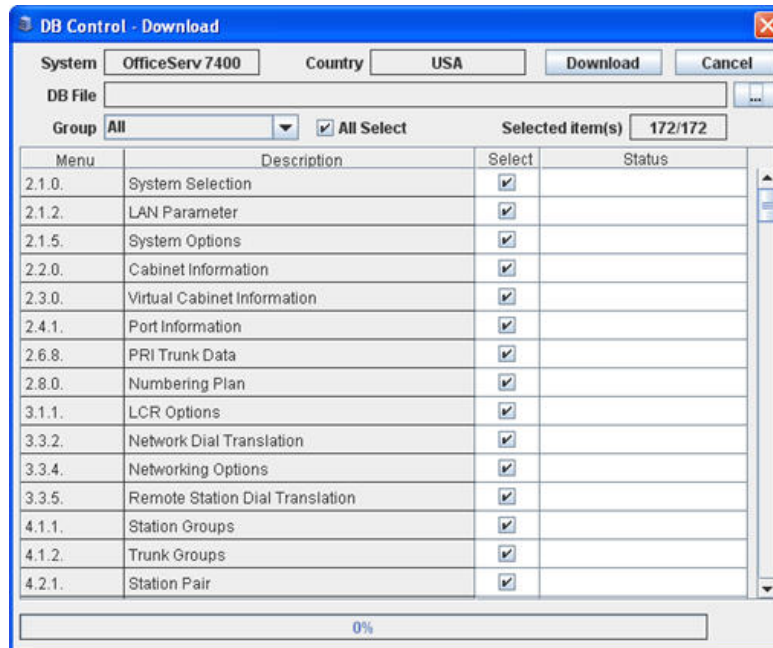
### ➤ Disconnect

The Disconnect menu option causes the Device Manager to log out of programming for the currently connected system and then disconnect.

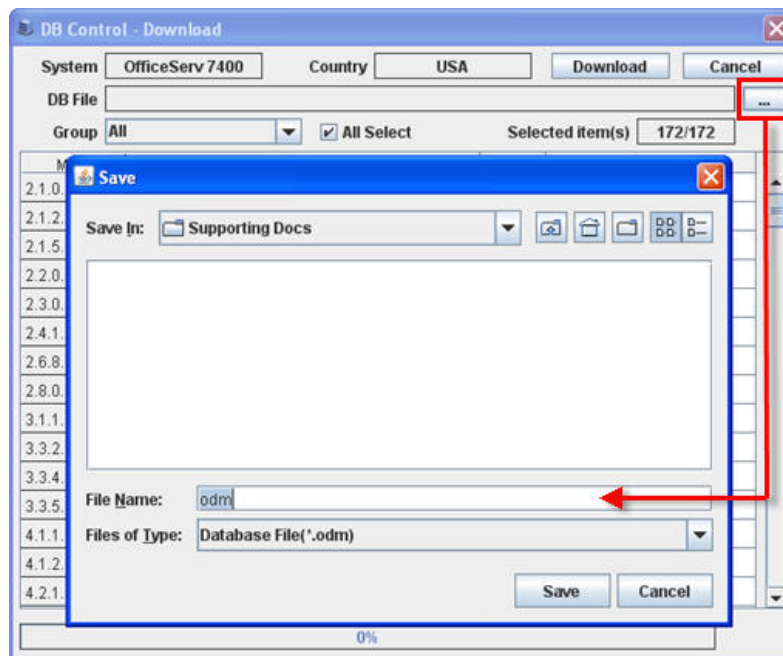
### ➤ Download DB

The Download DB option is used to save a copy of the system database to your PC for later use. The Download DB option is only available when the Device Manager is connected to a live system.

1. After selecting the Download DB option, the DB Control – Download file opens.

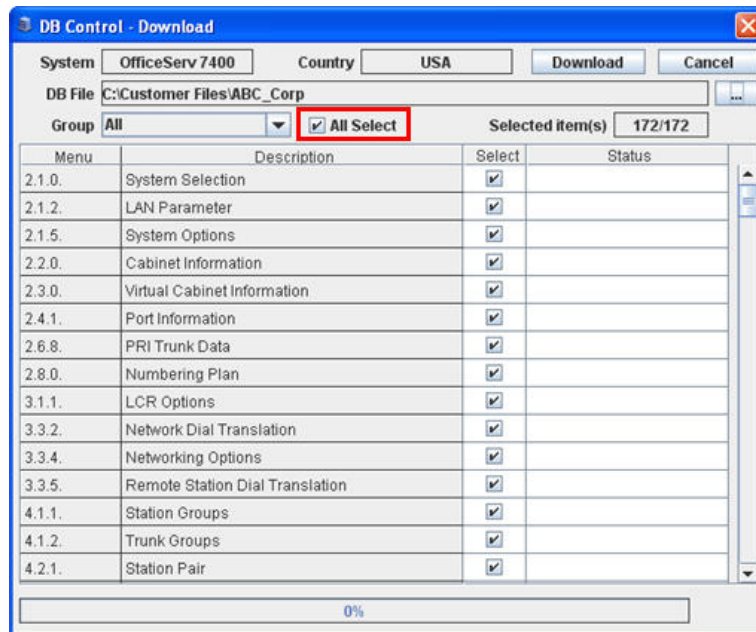


2. Select the icon shown here to select a location and name for the saved database. After specifying the file name, you will be prompted to enter a password which will be used to access the db file. The password may be blank or may contain up to 16 alphanumeric characters.

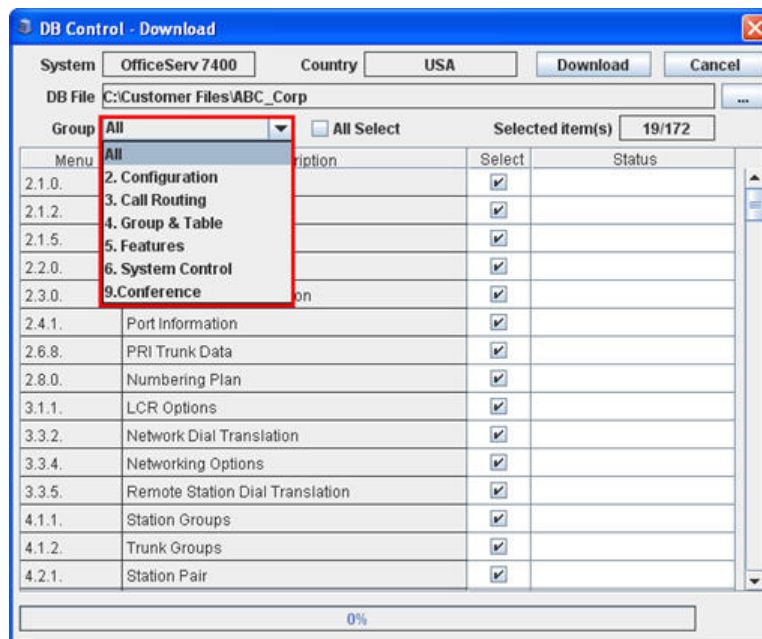


**NOTE:** The extension **ODM is required** for a backup file. The system **will not** automatically add this extension, please make sure to add the ODM extension to the file name when saving a backup copy.

- By default the **All Select** checkbox is checked, which means that all programming options will be downloaded. If you wish to specify only a certain set of options to download uncheck the **All Select** box.

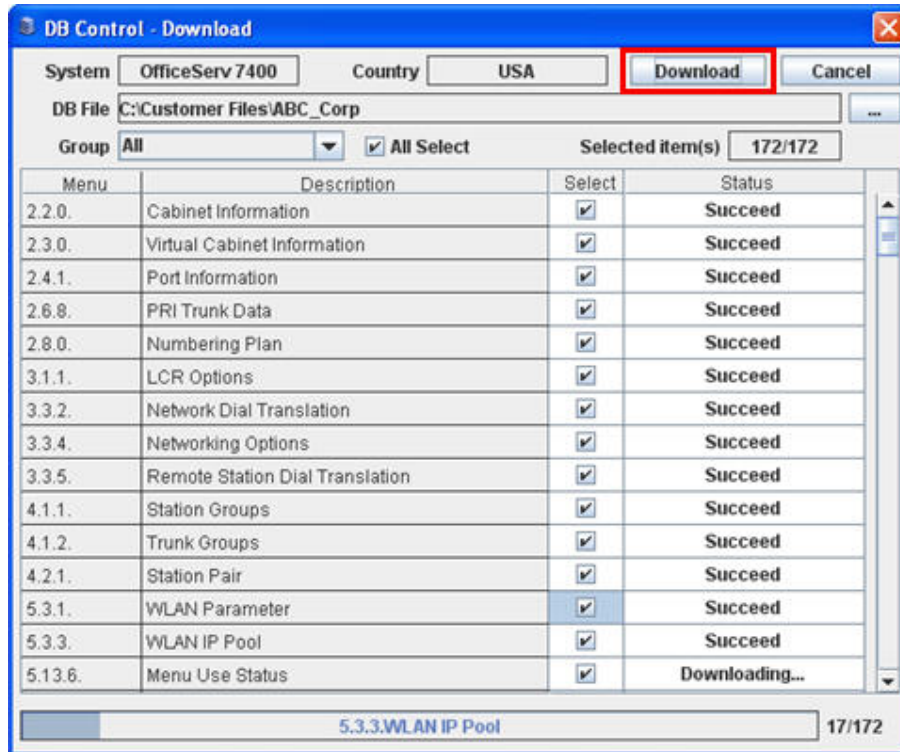


- The Group drop-down allows you to navigate through the programming option menu blocks to select items. There are 19 programming options that contain critical system profile information. These options are mandatory download pieces and do not allow you to uncheck them. They are 2.1.0, 2.1.2, 2.1.5, 2.2.0, 2.3.0, 2.4.1, 2.6.8, 2.8.0, 3.1.1, 3.3.2, 3.3.4, 3.3.5, 4.1.1, 4.1.2, 4.2.1, 5.13.6, 5.3.1, 5.3.3, and 6.2.5.

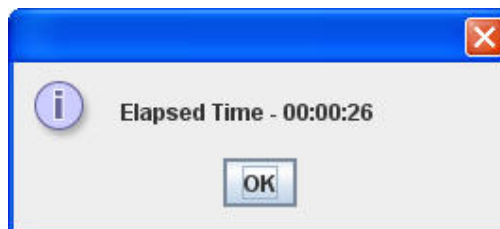




5. After you have selected all items you want to download click [Download]. The screen will change to show you the status of the download.



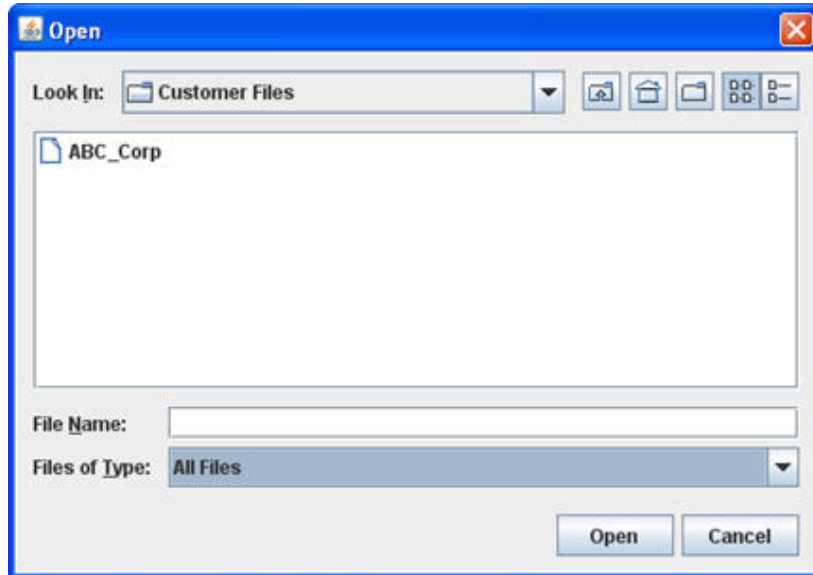
6. When the download is complete a message will appear telling you how long the process took. Typical download time is less than a minute.



## ➤ Upload DB To System

The Upload DB option is used to write a previously saved database to a live system. The Upload DB option is only enabled if the Device Manager is connected to a live system.

1. After selecting the Upload Database option a window will appear that allows you to locate the saved database you want to upload from your computer.

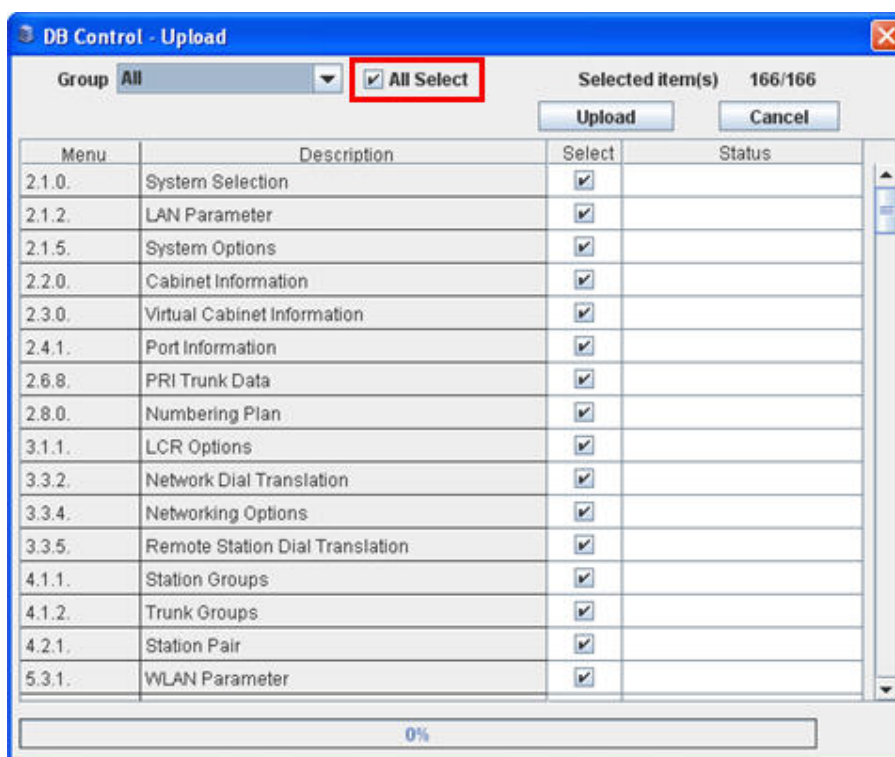


2. After specifying a file a window will appear asking you to enter the password to access the database file. This is the password set at the time of the database download and not the system technician passcode used to access KMMC or the Device Manager password used to log in to the system. If the password is entered incorrectly an error will be shown and you will have to try again.

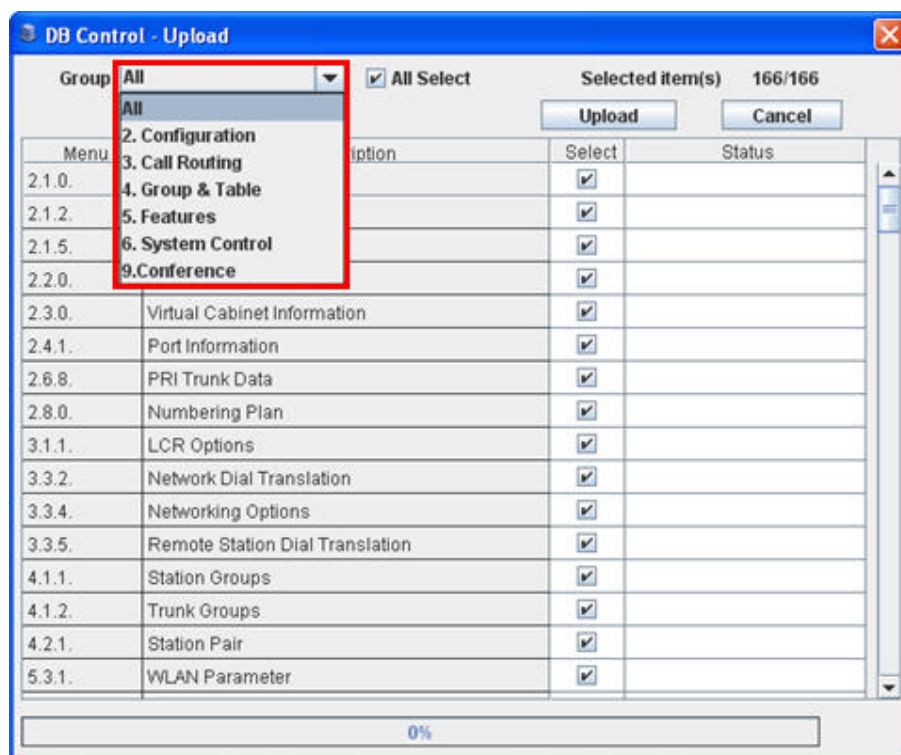


3. Once the password is entered successfully the database file will be checked against the connected system. If the database file was created with an older version of software than is currently running on the system you will be prompted to convert the database. If you choose not to convert the database the upload process will be cancelled. If you choose to convert the database a window will be displayed showing you the conversion progress.

4. After the version check routine has completed a hardware check will be performed to ensure the configuration matches between the connected system and the database. If any discrepancies are found a warning window will be displayed showing you the configuration conflicts. You may continue to upload and resolve the warnings later or you may cancel the upload process to resolve the issues before uploading. The Show All checkbox will display all database information instead of just the warning information.
5. DB Control window appears. This window is used to specify which programming options to upload. By default the **All Select** checkbox is checked, which means that the entire database will be uploaded. If you wish to specify only a certain set of options to upload uncheck the **All Select** box.



6. The Group drop-down allows you to navigate through the programming option menu blocks to select items. There are 18 programming options that contain critical system profile information. These options are mandatory upload pieces and do not allow you to uncheck them. They are 2.1.0, 2.1.2, 2.1.5, 2.2.0, 2.3.0, 2.4.1, 2.6.8, 2.8.0, 3.1.1, 3.3.2, 3.3.4, 3.3.5, 4.1.1, 4.1.2, 4.2.1, 5.3.1, 5.3.3, and 6.2.5.



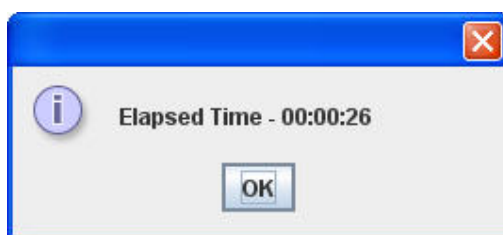
7. After you have selected all items you want to upload click [Upload]. The screen will change to show you the status of the upload.

The screenshot shows the 'DB Control - Upload' window. At the top, there is a 'Group' dropdown set to 'All', a checked 'All Select' checkbox, and 'Selected item(s) 163/163'. Below this are 'Upload' and 'Cancel' buttons. The main area is a table with four columns: Menu, Description, Select, and Status.

Menu	Description	Select	Status
2.1.0.	System Selection	<input checked="" type="checkbox"/>	Succeed
2.1.2.	LAN Parameter	<input checked="" type="checkbox"/>	Succeed
2.1.5.	System Options	<input checked="" type="checkbox"/>	Succeed
2.2.0.	Cabinet Information	<input checked="" type="checkbox"/>	Succeed
2.3.0.	Virtual Cabinet Information	<input checked="" type="checkbox"/>	Succeed
2.4.1.	Port Information	<input checked="" type="checkbox"/>	Succeed
2.6.8.	PRI Trunk Data	<input checked="" type="checkbox"/>	None
2.8.0.	Numbering Plan	<input checked="" type="checkbox"/>	Succeed
3.1.1.	LCR Options	<input checked="" type="checkbox"/>	Succeed
3.3.2.	Network Dial Translation	<input checked="" type="checkbox"/>	Succeed
3.3.4.	Networking Options	<input checked="" type="checkbox"/>	Succeed
3.3.5.	Remote Station Dial Translation	<input checked="" type="checkbox"/>	Uploading...
4.1.1.	Station Groups	<input checked="" type="checkbox"/>	
4.1.2.	Trunk Groups	<input checked="" type="checkbox"/>	
4.2.1.	Station Pair	<input checked="" type="checkbox"/>	
5.3.1.	WLAN Parameter	<input checked="" type="checkbox"/>	

At the bottom, a progress bar shows '3.3.5.Remote Station Dial Translation' and '12/163'.

8. When the upload is complete a result message will appear telling you how long the process took. Typical upload time is less than a minute.



NOTE

#### Upload/download failure

If the upload/download fails, an error message is displayed and the upload/download is cancelled.



CAUTION

#### Caution when uploading

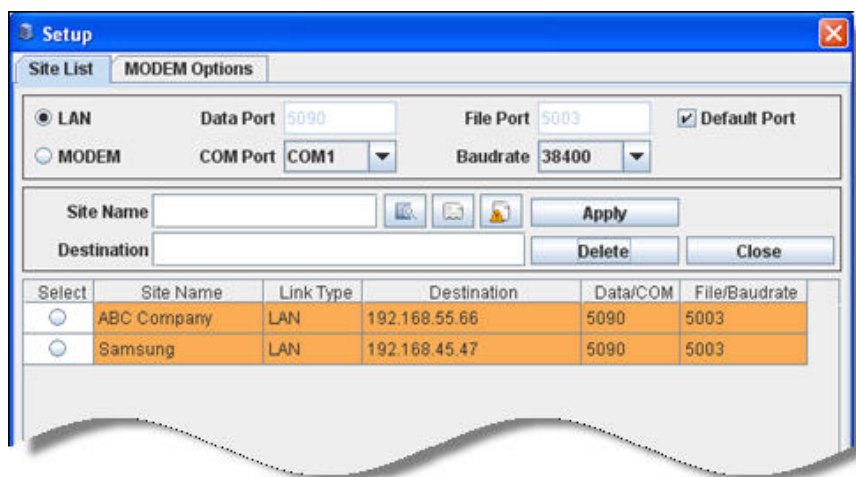
- When uploading, the card slot of the user's PC database should be identical to the key phone system's card slot.

## ➤ Link Setup

The Link Setup window is a connection manager for your OfficeServ™ system connections. It contains 2 main tabs: Site List and Modem Options.

### Site List

The Site List window is the site management portion of the Link Setup. It allows you to add, edit, or delete site information as well as view data for all your stored connections. Click on [System] => [Link Control] will display the following screen.



Field	Details
Site Name	The name for the connection, which is used mainly for your reference.
Link Type	Select between Modem and LAN (Local Area Network).
Destination	Enter the site's IP Address (LAN)/telephone number (Modem).
Data Port	Enter which port the OfficeServ DM will use during LAN connection. This will typically be left at default. To set a new value you must uncheck the Default Port checkbox.
File Port	Enter which port the file control will use during LAN connection. This will typically be left at default. To set a new value you must uncheck the Default Port checkbox.
COM Port	Determines the port on your PC that the MODEM is connected to.
Baudrate	Determines the modem connection speed
[Delete] Button	Delete the selected site information.
[Apply] Button	Saves new site information or makes the selected site the active site to be connected to.
[Close] Button	Closes the screen.

## Modem Options

The Modem Options tab allows you to set configuration parameters for MODEM connections. Once changes have been made you must click [Apply] to save them.



Field	Details
Dial Retry	Sets the number of outcall attempts to make.
Dial Duration	Sets the length of time to wait for a connection to be made.
Dial Type	Sets whether the MODEM should dial using DTMF or Pulse dialing
Initial Command	Sets the initialization string to use to setup the MODEM call.

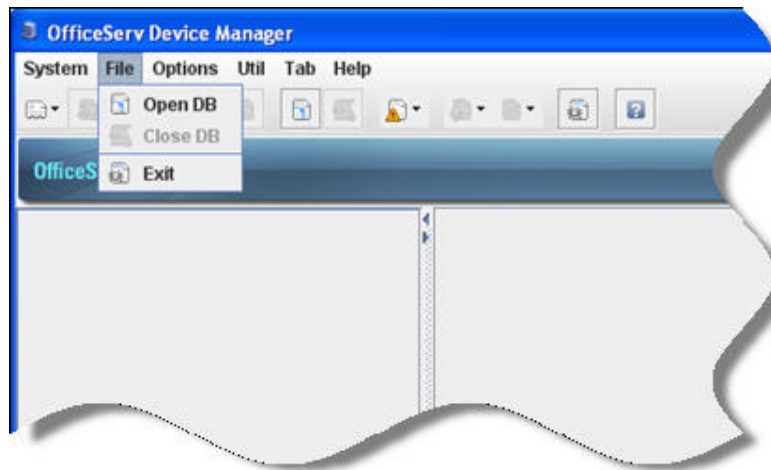


NOTE

### Link Setup

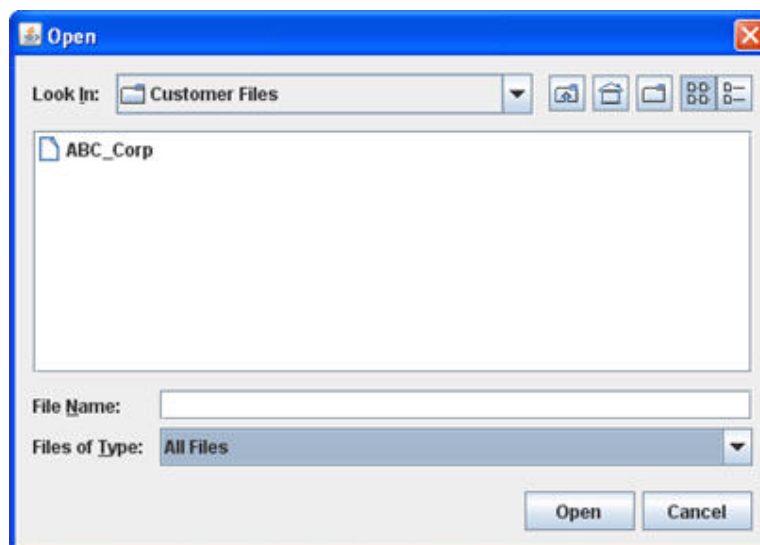
More information regarding the Link Setup window is located in Chapter 2.

## File Menu



### ➤ Open DB

The Open DB option is used to open a saved database for offline editing. After clicking this option a window will appear that allows you to locate the saved database you want to edit from your computer. The Open option is only enabled if no database is currently being edited and the Device Manager is not connected to a live system.





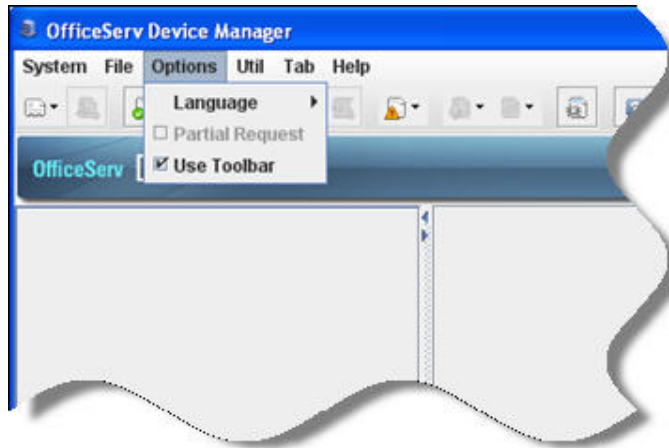
➤ **Close DB**

The Close DB option is used to close the connection to a saved database that is being edited.

➤ **Exit**

The Exit option is used to exit the Device Manager application entirely. After clicking this option you will be prompted to confirm you wish to exit. Remember to save any changes before exiting the application.

## Options Menu



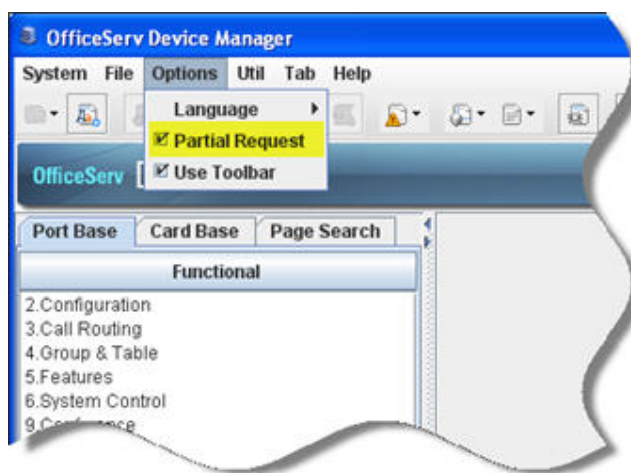
➤ **Language**

The Language option is used to set the language for Device Manager's user interface. The default language is English. After clicking a new language a prompt will be displayed alerting you that the language has been changed and that you'll need to restart the program.

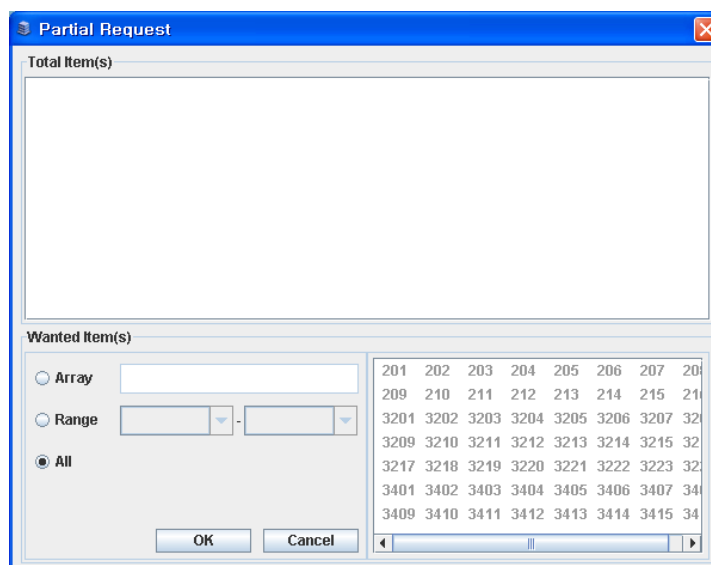
➤ **Partial Request**

When the Partial Request option is enabled, some programming options will allow you to return data for an array of options, a range or all. This can be useful when working with a large database.

You can select/deselect the Partial Request option in the Options menu as shown here.



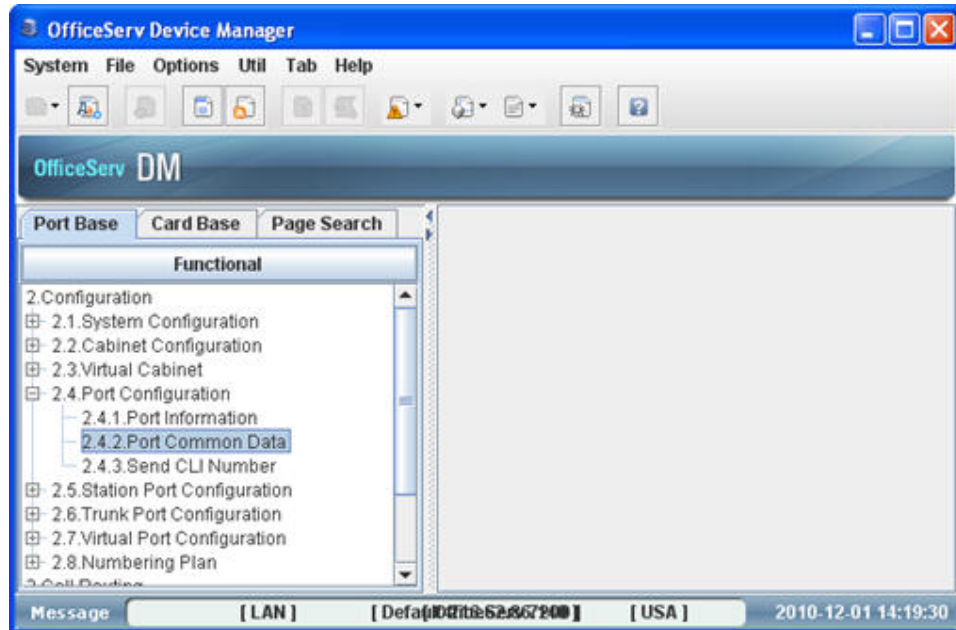
Once enabled, selecting some programming options will present the Partial Request screen before opening the data window.



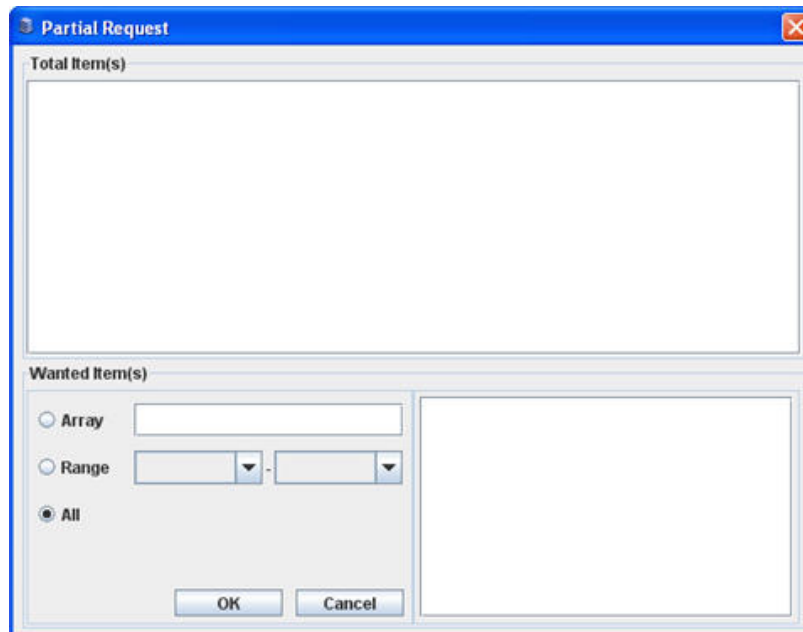
Field	Details
Total Item(s)	Displays all available items
Array	Allows you to select individual items to view.
Range	Select a range of items.
All	Select all items

Partial Request Example:

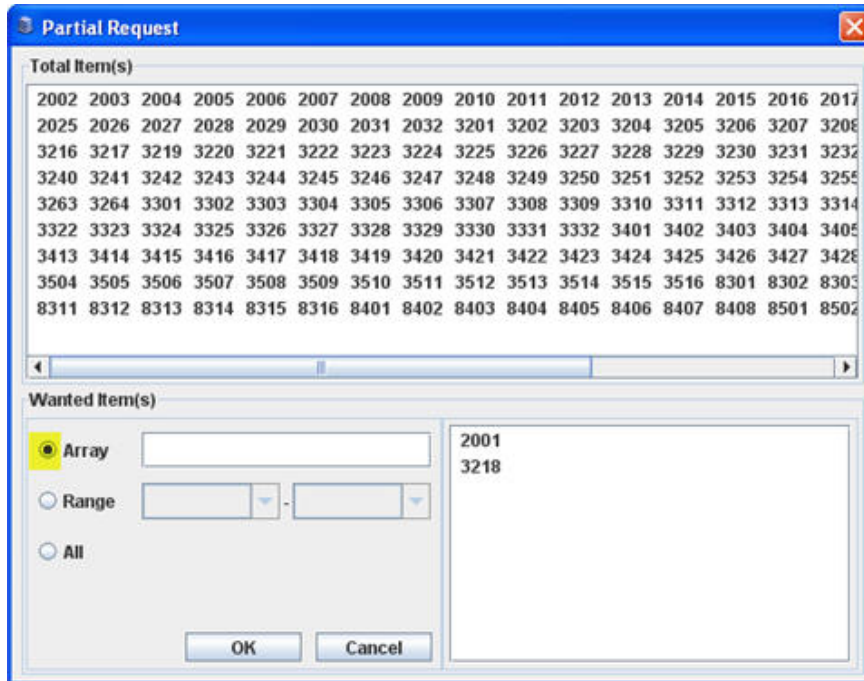
1. We've enabled Partial Request. In our Port Base window, we select programming option 2.4.2 Common Data



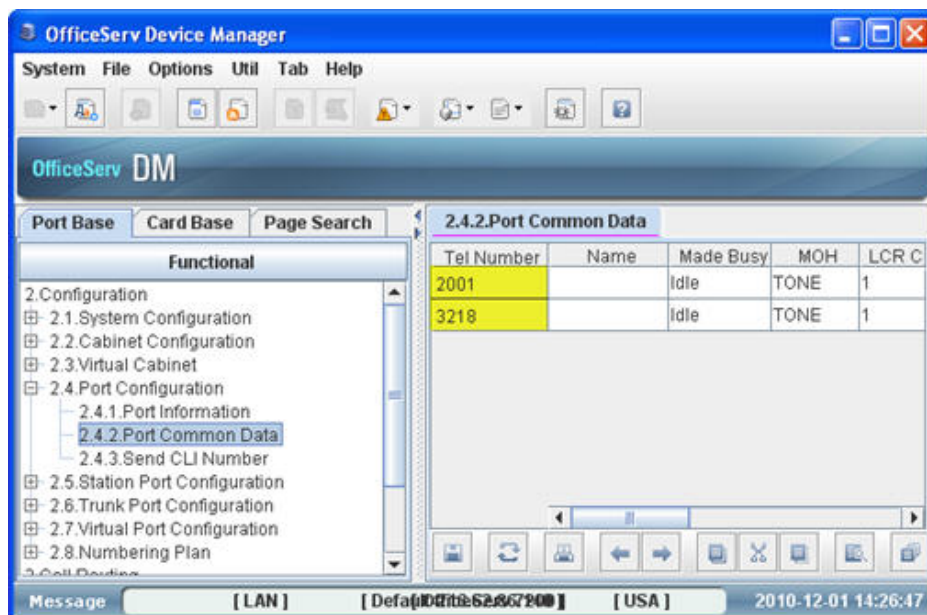
2. Because we have the Partial Request option enabled, the following screen appears.



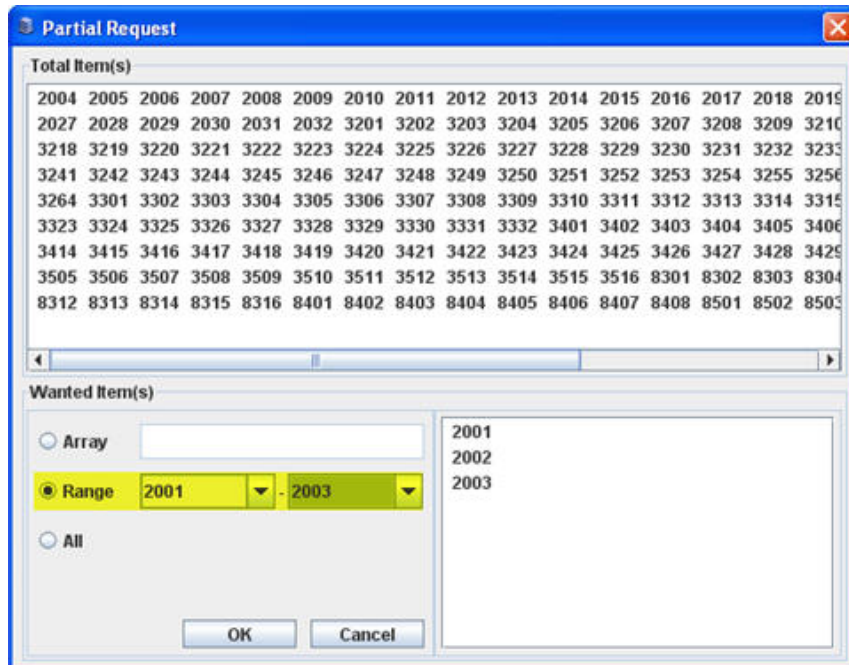
- We want to view programming data for extensions 2001 and 3218 only so in the Partial Request window we select **Array**. We then double-click each required extension in the **Total Item(s)** window which moves it to the window below. We'll click the **OK** button when finished.



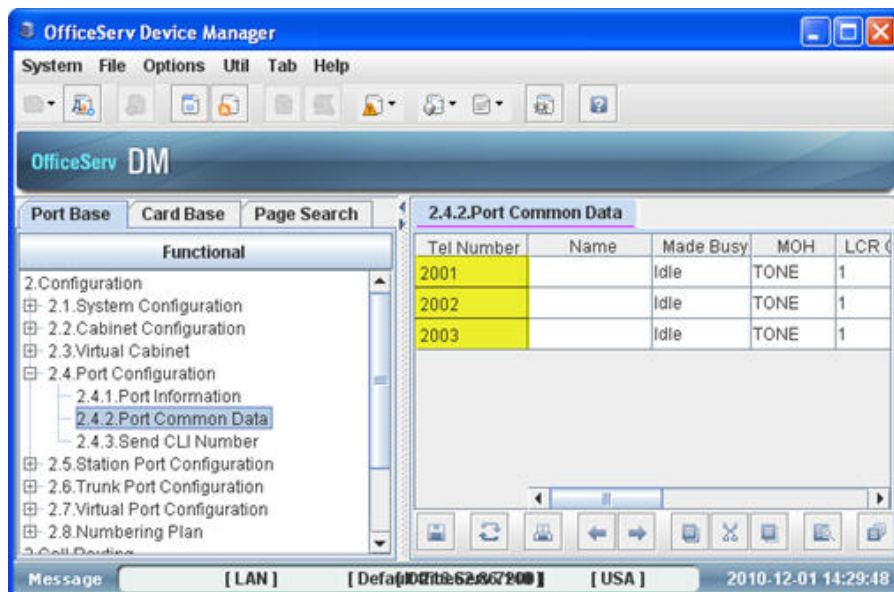
- The 2.4.2 Port Common Data window opens showing information for only extensions 2001 and 3218.



- Now let's assume we want to view a range of extensions. In this example, we want to view programming data for extensions 2001 through 2003 only so in the Partial Request window we select **Range**. We then select the first extension in our range (2001) in the first drop-down box and select the last extension in our range (2003) in the second drop-down box. We'll click the **OK** button when finished.

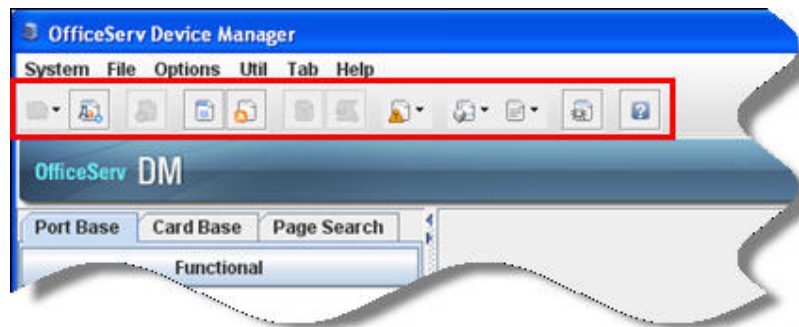


- The 2.4.2 Port Common Data window opens showing information for only extensions 2001 through 2003.

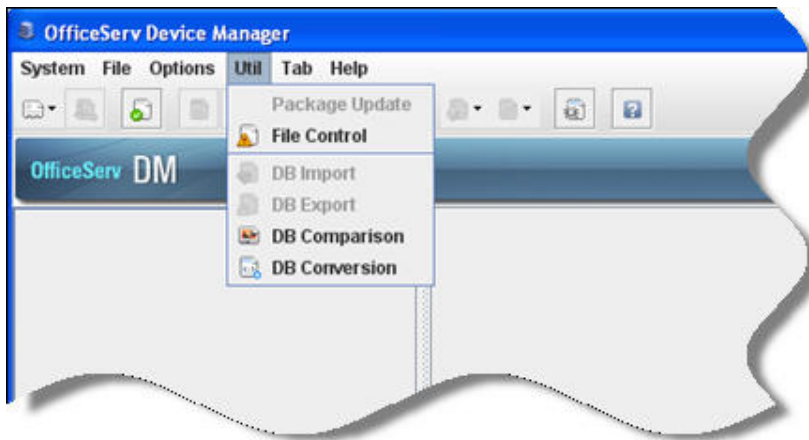


### ➤ Use Toolbar

This option will toggle the Toolbar (shown below) on or off.

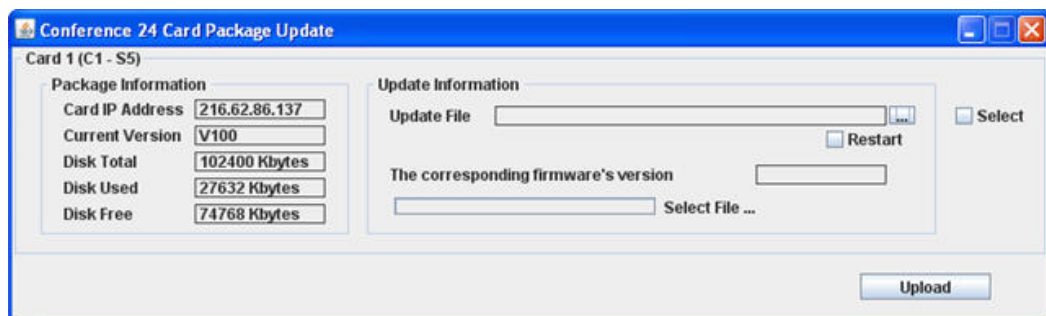


## Util Menu

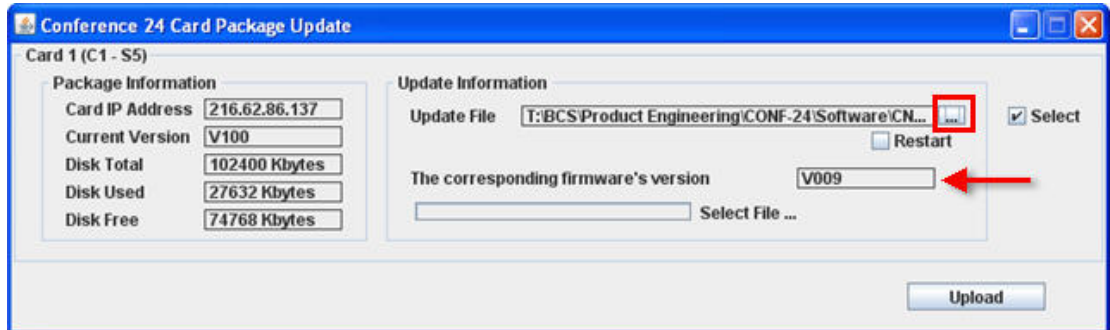


### ➤ Package Update

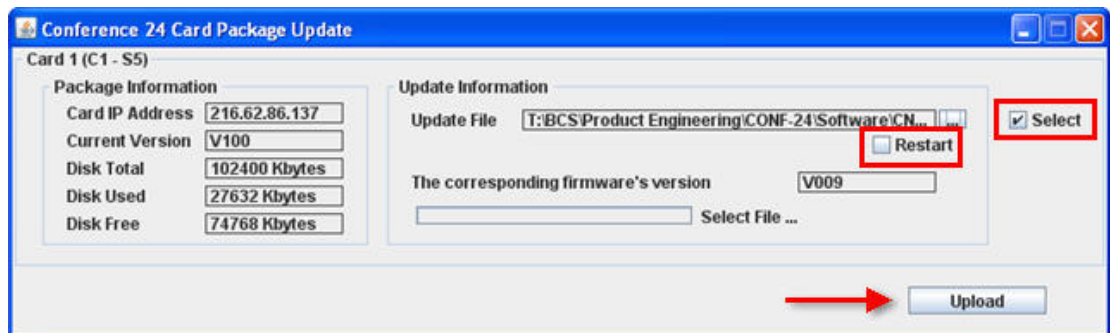
The Package Update option is used to perform software updates for the Conference 24 card.



1. Select the file to update by clicking "..." and navigating to the update file.  
After the file is selected, firmware version will be displayed as shown here.



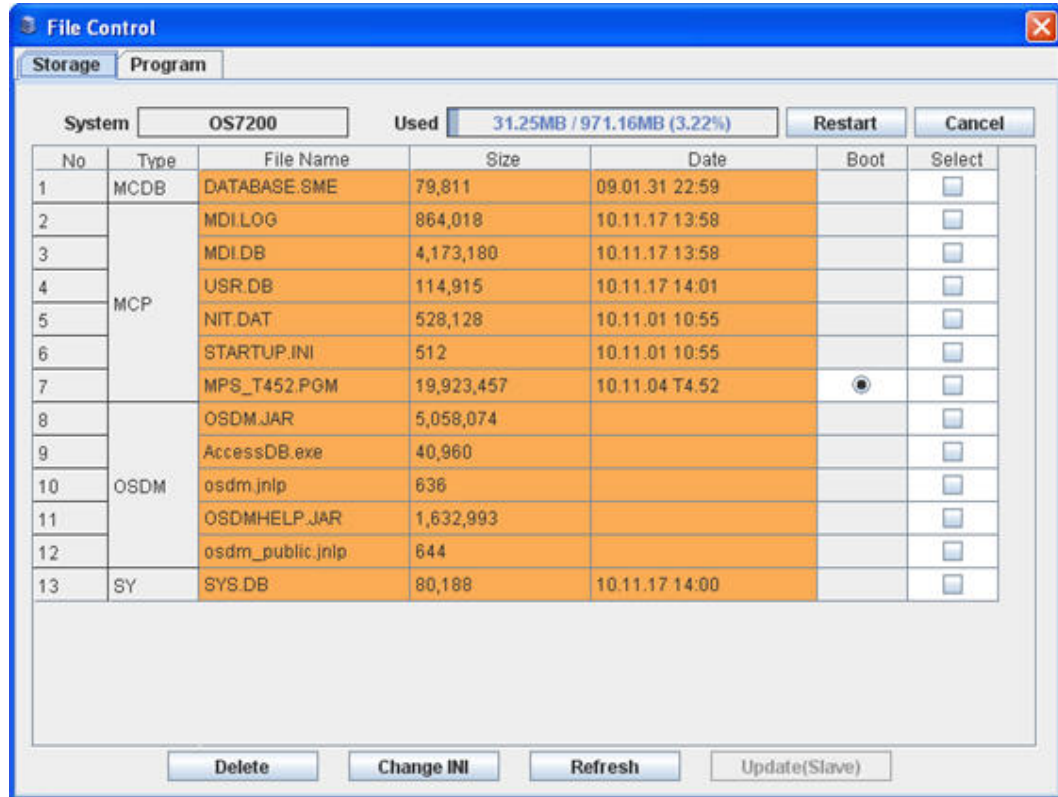
2. Make sure the **Select** option is checked. After uploading, the card should be restarted, so make sure the Restart option is selected. Click the Upload button to upload the file.





## ➤ File Control

To upload/delete a program file to/from the key phone system's Smart Media/MMC card, select **File Control** from the **Util** menu. The following screen is displayed.



Field	Details
[Refresh] Button	To refresh the system file index.
[Delete] Button	To delete the selected file.
[Change INI] Button	To select which initialization file to use during the system startup.
[Restart] Button	Restart the system with the new program.
[Cancel] Button	Closes the screen.



NOTE

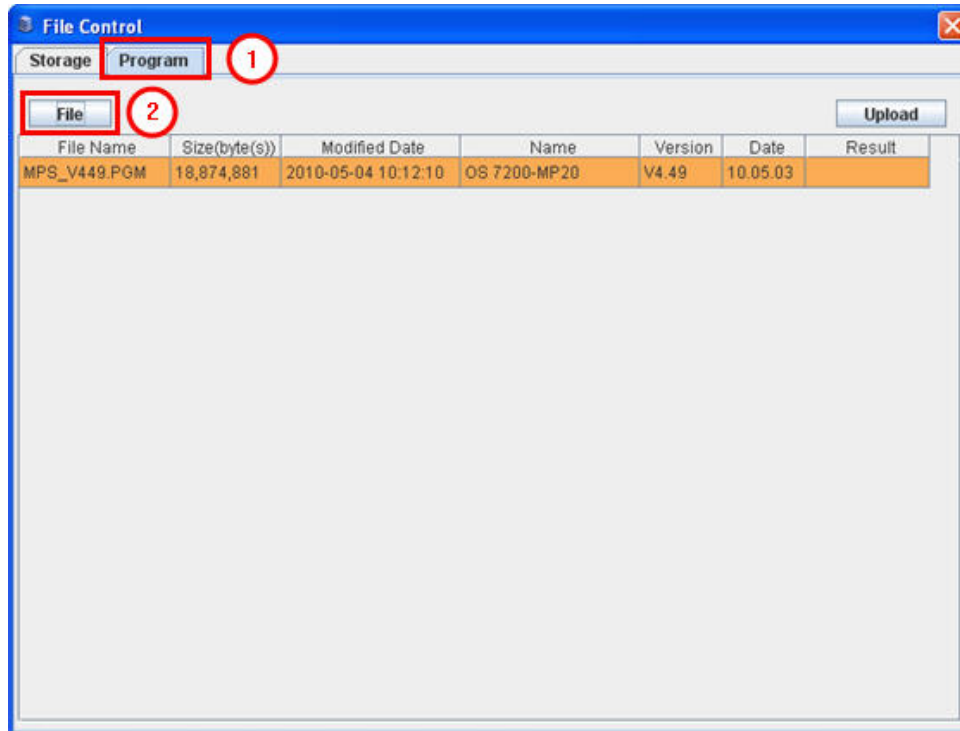
### Using the [Change INI] button

The [Change INI] button can only be used with all OfficeServ 7000 systems.

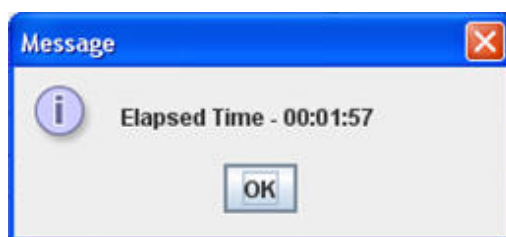


## Uploading the Program File (Example)

1. Select (1) [**Program tab**] and then click on (2) [**File**]. Select the location (path) and name of the file to upload to the key phone system's Smart Media/MMC card/SD card.



2. Click on [**Upload**] to start the upload.
3. Upon successful completion of the file upload, the following message is displayed.



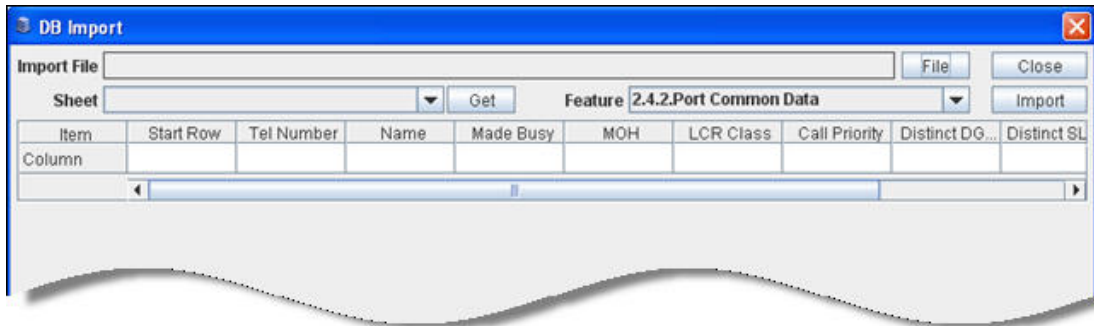
### Uploading the file

You can verify the status of the file upload using the 'MMC 818','PGM DOWNLOAD'.

## ➤ DB Import/Export

This menu is used to import/export a specific page content from/to the Excel file (\*.xls). This can only be used in off-line mode.

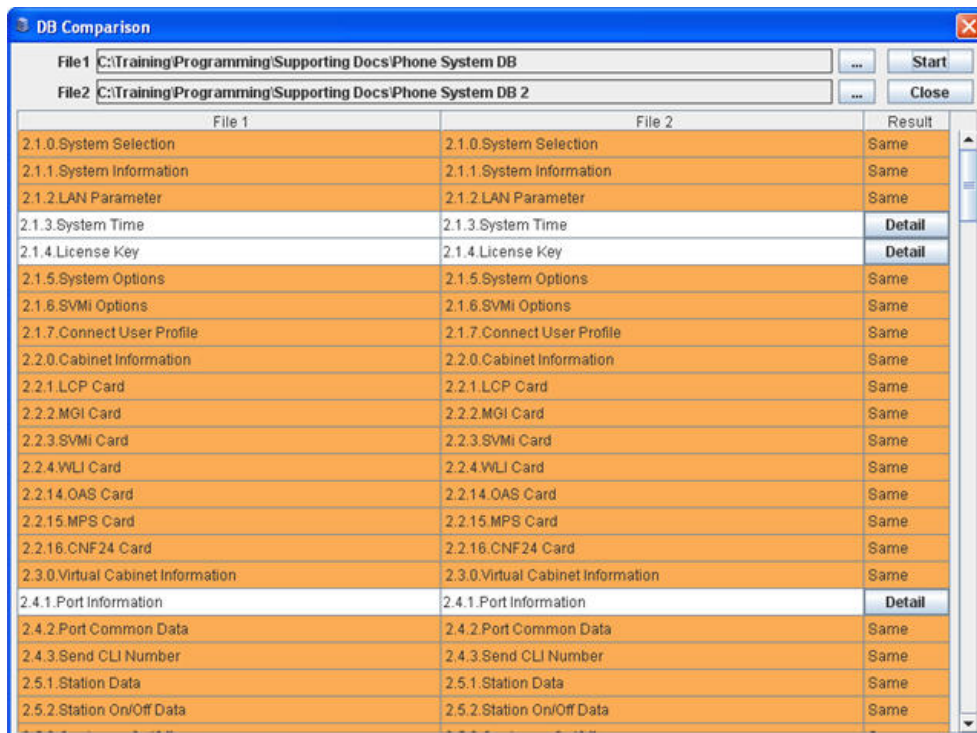
Click on [Util] => [Import/Export]. The following screen is displayed.



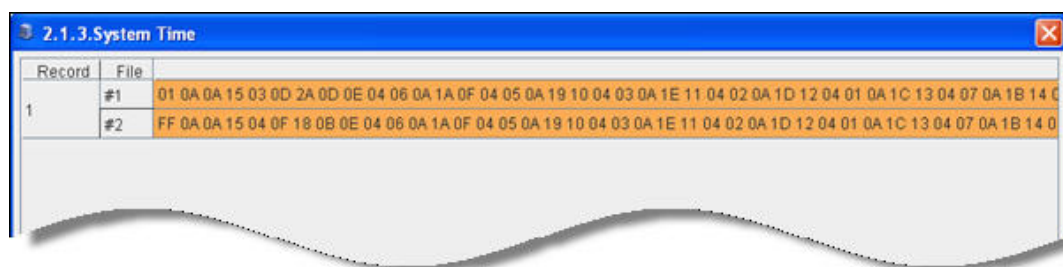
## ➤ DB Comparison

The DB Comparison option lets you compare two databases to find any differences between them. This is extremely useful when troubleshooting conversion or upgrade issues.

Enter the two database files to perform the comparison on and then click on the **Start** button. The results pane will display the list of mismatched programming options (programming options that are different between the two databases).

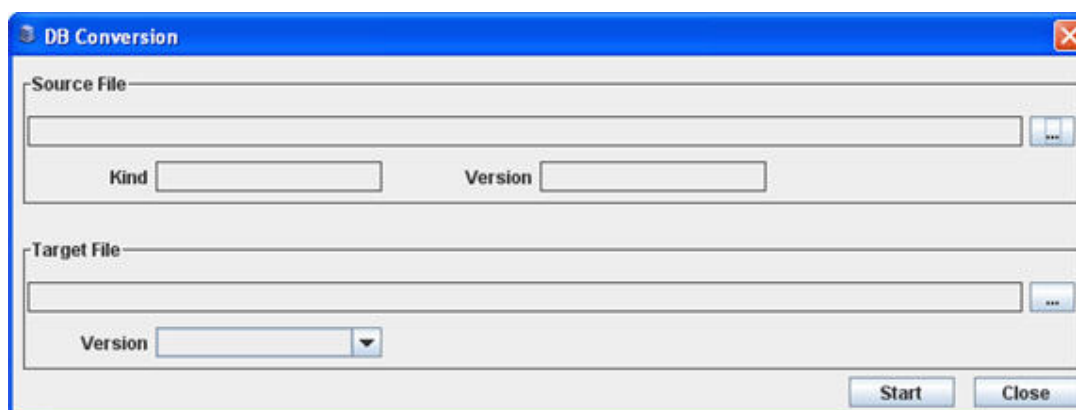


If you click the View Details button in the Toolbar you can view the raw data for the changes. The details are listed in hexadecimal and are shown only for your reference.



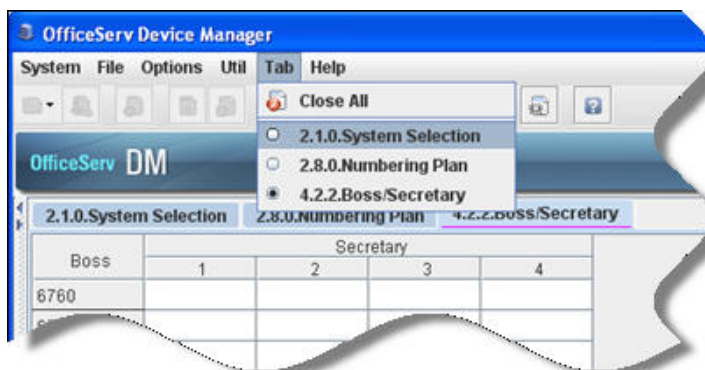
## ➤ DB Conversion

This menu is used to convert an older Device Manager database file to the most current version.

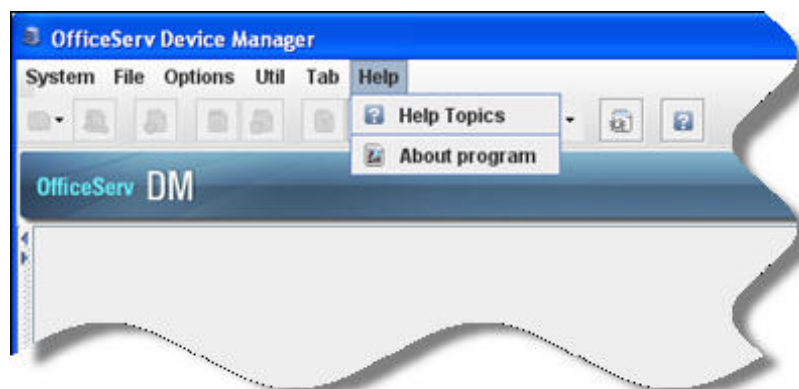


## Tab Menu

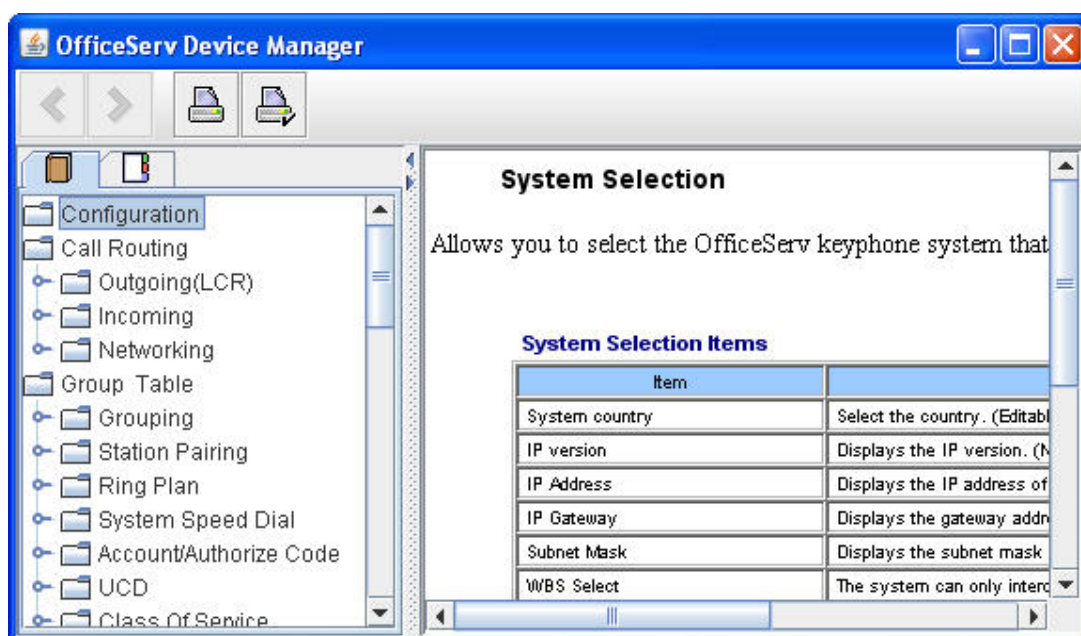
The Tab menu shows all open windows and allows you to navigate between them. It also provides an option to close all open windows.



## Help Menu



The **Help Topics** option displays the help contents in a separate help window.



The **About Program** option displays version information for Device Manager.



# OfficeServ Device Manager Main Screen

## Toolbar Icon



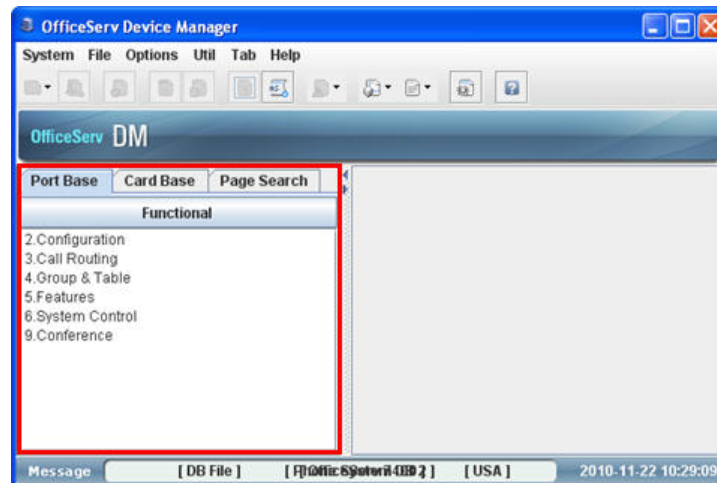
The quick access toolbar allows you to use the most common features of the Device Manager, such as connecting to a system or downloading a database, from a single click. The toolbar can be customized to add or remove options by double-clicking any empty space in the toolbar. By default all options are added to the toolbar.

Icon	Details
	<b>Connect:</b> Connect to an OfficeServ system
	<b>Disconnect:</b> Disconnect from an OfficeServ system
	<b>Link Control:</b> Configure the communication environment and maintain site list
	<b>Download DB:</b> Download a database file
	<b>Upload DB:</b> Upload a database file
	<b>Open:</b> Open a database file
	<b>Close:</b> Close a database file.
	<b>File Control:</b> Upload/delete a program file
	<b>Bookmark:</b> Manage bookmarked files/displays the page index
	<b>History:</b> Delete a previously opened page/displays the page index
	<b>Exit:</b> Terminate Device Manager
	<b>Help:</b> To display the program's version and its creation date
	<b>Data:</b> To setup data configuration for 7030 systems

## CHAPTER 4. Screen Layout

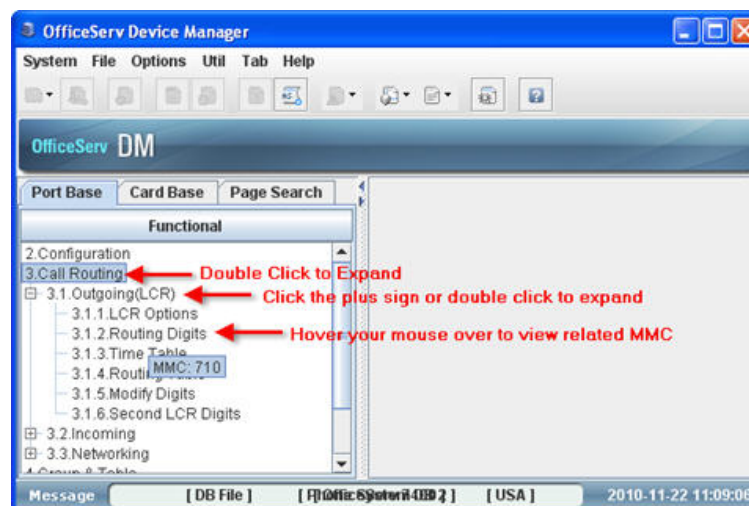
### Programming Option List

The programming option list displays all programmable options of the current system. It is divided into the Port Base, Card Base and Page search panes.



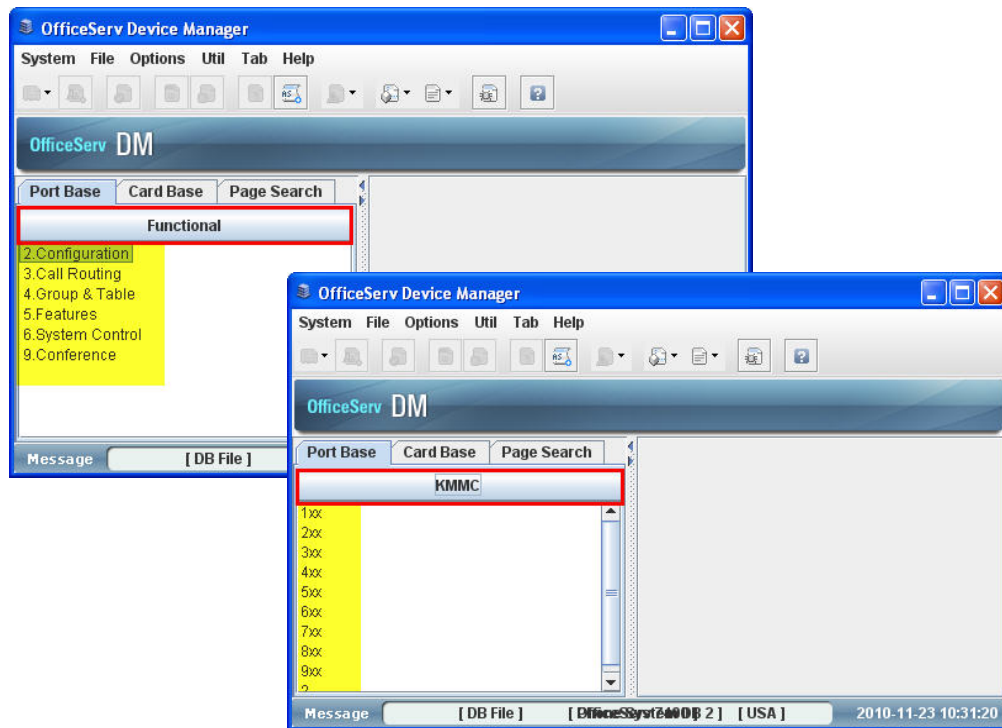
### Port Base

This pane displays all programming options for the current system in a menu tree format. Double-click the menu item to open its' contents. Hovering over a programming option in the menu tree will show a tooltip displaying the MMC number or numbers related to this option.



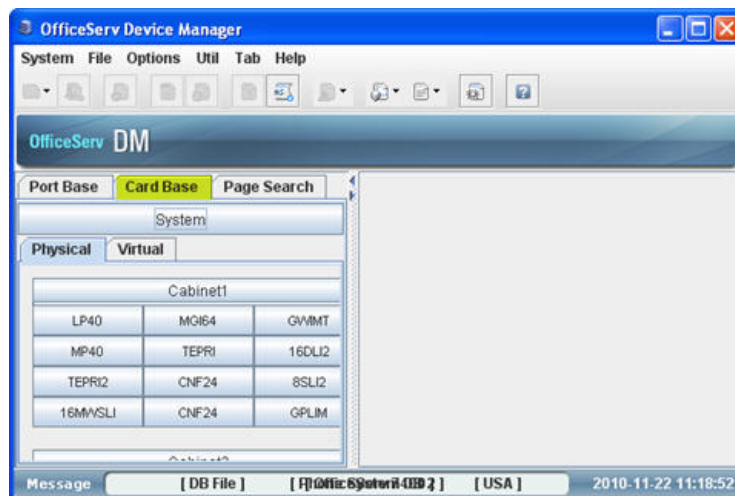
## ➤ Categories/KMMC View

You can toggle between category view and KMMC view by clicking on the [Functional]/[KMMC] button:



## Card Base

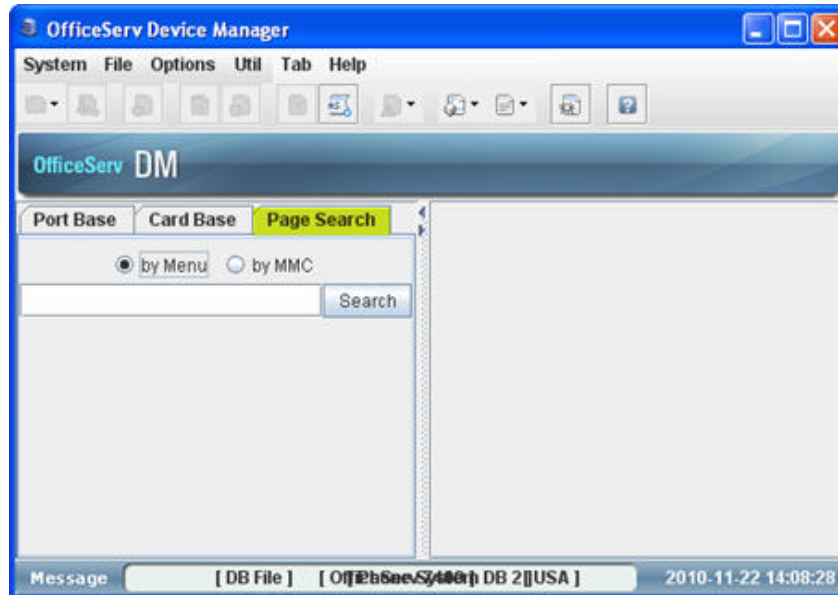
This pane displays the current system's physical structure. All cabinets will be displayed, as well as cards in those cabinets. Note that if an expansion cabinet is not installed it may still be displayed, but with only an LCP card installed. Click on a card slot to open a special programming option display that will have buttons for all menu options relating to the current card type or click the heading (i.e. Cabinet1) to display information on the cabinet itself. Note that programming options opened in this manner cannot be added to your bookmarks list.





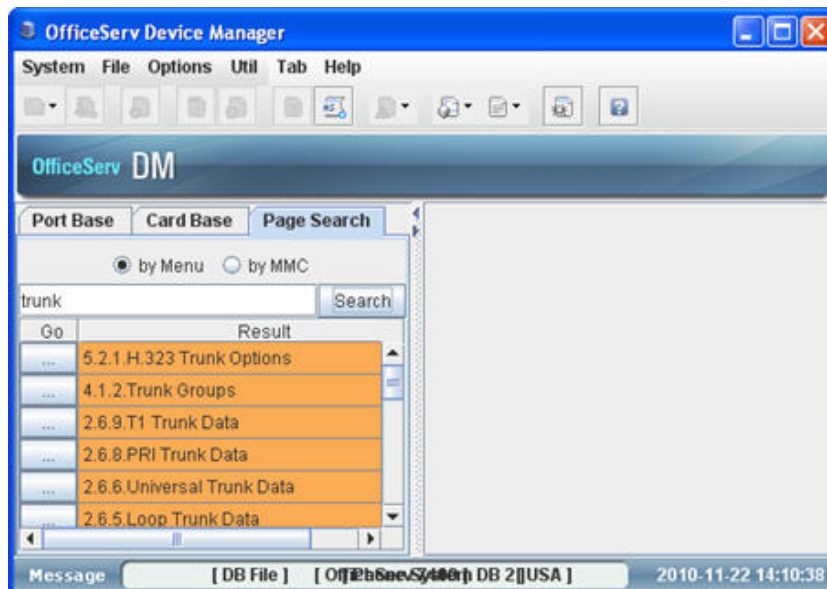
## Page Search

The search pane is used to look up a programming option's menu number by Menu or by MMC number. This is useful when you aren't sure exactly which menu option contains the information you want to change.



### ➤ Search (by Menu)

Select [by Menu] and enter a keyword. Click on the [Search] button. The results are displayed below the search field. Select any result option by clicking on the corresponding [Go] button.





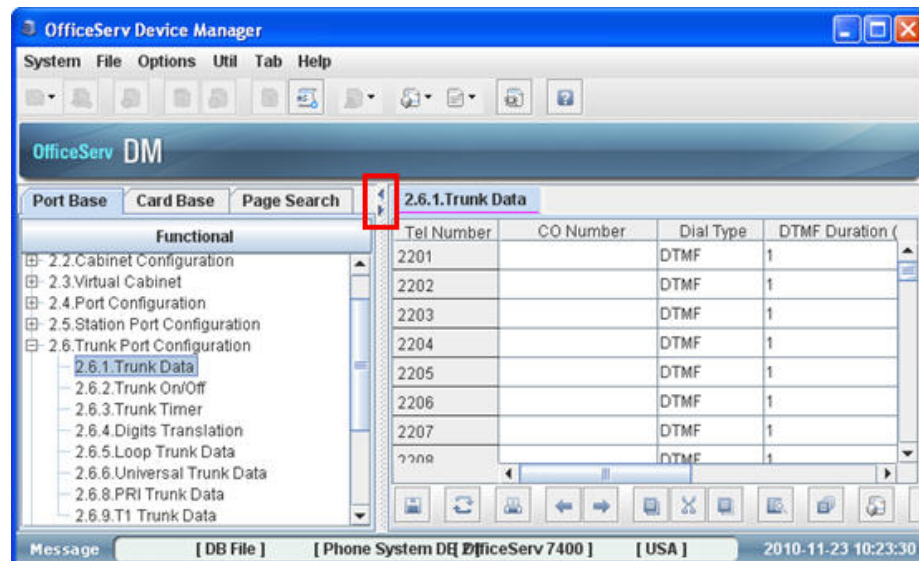
## ➤ Search (by MMC)

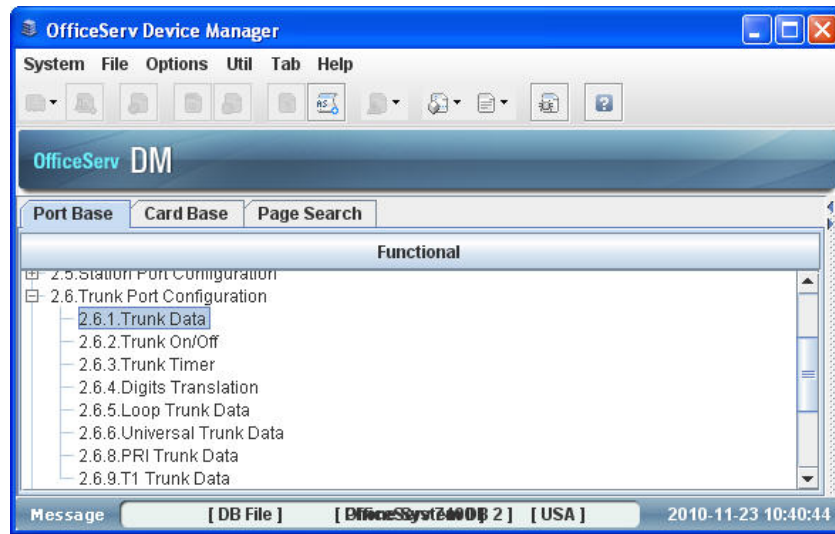
Select [by MMC] and enter the desired MMC number. Click on the [Search] button. The results are displayed below the search field. Select any result option by clicking on the corresponding [Go] button.



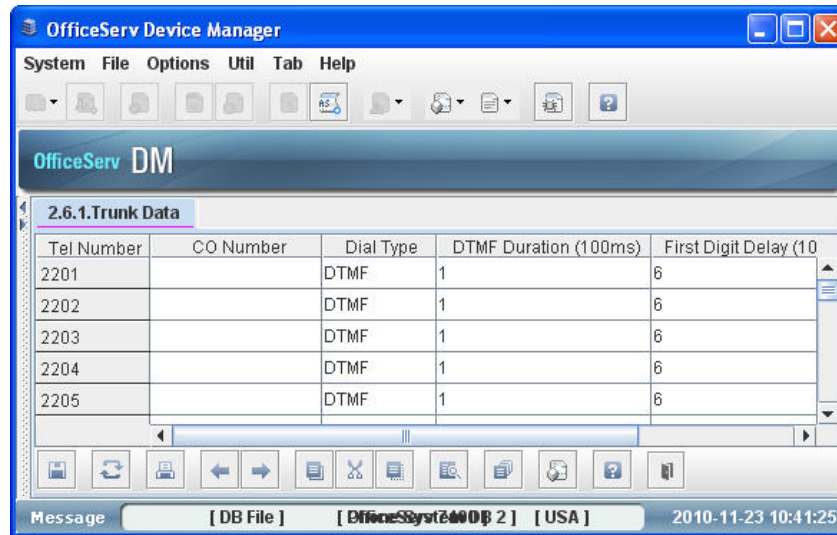
## Expand/Collapse

The arrows located between the Programming Option List and the Programming Data Pane can be used to expand either window when you need more room to work.





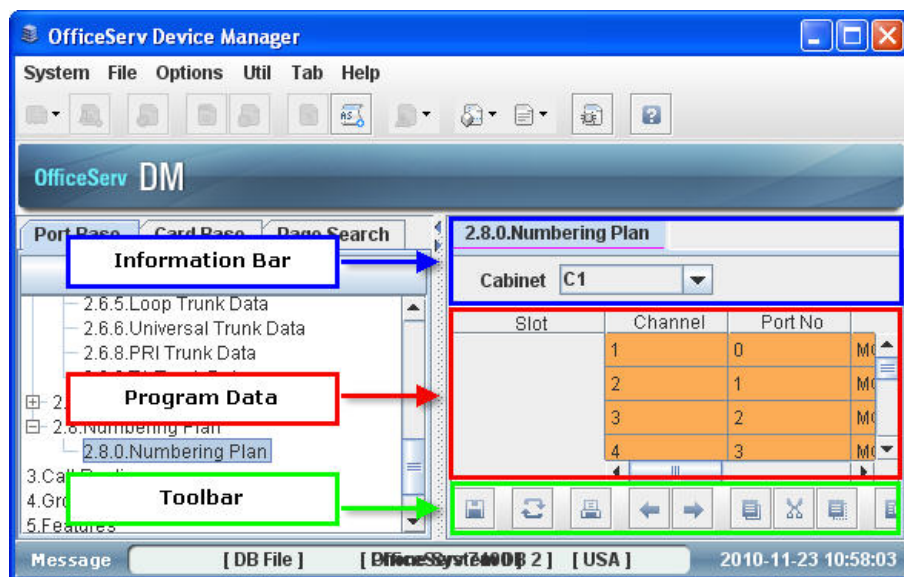
Programming Option List Expanded



Programming Data Pane Expanded

# Programming Data Pane

The programming data pane is where most of your work in the Device Manager will happen. This is the area where programming option data will be presented and where changes can be made. Each programming option has unique fields and characteristics, but all share some common traits as shown below:



## Information Bar

The information tab will always display the current programming option menu position, such as 2.8.0 or 5.1.7, to help you keep track of which programming option you are currently viewing. If you have opened a programming option from the Card Base view, this area will also contain buttons linking to other programming options. In addition to this, some programming options also contain additional filters which are displayed as drop-down boxes in the information bar. These filters include such things as class of service or cabinet number and are used to help reduce the quantity of data displayed on the screen at once. This helps to reduce download times and also increase readability for you.

## Program Data














This is where you will actually make changes to data. Each programming option is displayed in a table format.

- Fields with a grey background are headers and contain such data as port numbers and timer names.
- Fields with grey text on a white background are read-only data fields meant for reference only.
- Fields with black text on a white background are editable data. To change data you can click the field and type your entry, or double-click the field to edit the existing data.

## Toolbar

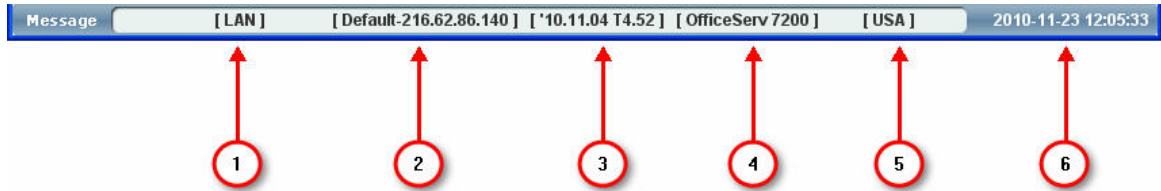
The toolbar is used to perform actions related to programming data, such as saving, copy/pasting, or sorting. This toolbar is separate from the main Device Manager toolbar, and is displayed below the Program Data.

### ➤ Toolbar Icons

Icon	Details
	<b>Save:</b> Saves your programming changes for the current option
	<b>Reload:</b> Reloads the data for current programming option from the system
	<b>Print:</b> Prints the current programming option data table to a printer
	<b>Close:</b> Closes the current programming option.
	<b>Previous:</b> Opens the previous programming option (i.e.- if viewing 2.1.1 this will load 2.1.0)
	<b>Next:</b> Opens the next programming option (i.e.- if viewing 2.1.0 this will load 2.1.1)
	Adds this programming option to your bookmarks list. This list can be accessed from the main Device Manager toolbar
	<b>Cut:</b> Deletes the current field selection and places it in memory for later pasting
	<b>Copy:</b> Copies the current field selection to memory for later pasting
	<b>Paste:</b> Writes previously cut or copied field selections to the currently selected field or fields
	<b>Search:</b> Searches inside a programming option for specific text
	<b>Repeat:</b> Automatically fills a sequence of fields based on your criteria. A dialog will be displayed asking what the starting number should be and what the increment should be
	<b>Help:</b> Displays Help topics for current page

## Status Bar

The status bar displays helpful reference information about current activity. It is divided into 6 sections as follows:



1. **Connection Mode:** Indicates whether you are connected via a LAN, Modem or working on an offline file.
2. **Connection Information:** Displays the system you are currently connected to. This will display the connection name in addition to the IP address or phone number.
3. **System Version:** Displays the MP software version of the currently connected system
4. **OfficeServ System Type:** Displays the current OfficeServ™ 7000 Series system type you are connected to (OS7030, OS7100, OS7200, OS7200S and OS7400)
5. **Country Code:** Displays the country code the current system is set to
6. **Date/Time:** Displays the current date and time