

OfficeServ™ 7000 Series

Installation Tool Quick Setup Guide

What is Installation Tool?

Installation Tool is used to connect to an OfficeServ 7000 system either remotely or locally via a LAN or Modem connection for performing system programming, administration, and maintenance.

System Requirements

Below are the minimum PC requirements for Installation Tool to function properly.

Component	Requirement
CPU	Pentium IV - 1 GHz or higher
RAM	512 MB RAM or higher
Hard Drive	30 MB or more free space
Operating System	Microsoft Windows™ (all editions)
Modem Card (Optional)	1200 bps or faster (for Modem connection types only)
Network Interface Card (Optional)	10/100T or faster Ethernet NIC (for LAN connection types only)

Software Installation

Software can be downloaded from the Samsung Global Business Network (GSBN) website (www.samsunggsbn.com) under Communication → Technical Support → Downloads → Released Software → Installation Tool Version 1.30a.

The software file name is IT(100429)_V1.46d.zip

1. Unzip the installation file and launch the 'Setup.exe' file. The setup preparation screen is displayed (see Figure 1). Click on **[Next>]** to initiate installation.



Figure 1. Installation Tool Install Wizard

2. On the <Choose Destination Location> screen (see Figure 2), click on **[Browse...]** and select the location where the program is to be installed. Click on **[Next>]** to continue.



Figure 2. Choose Destination Location

3. The following screen (see Figure 3) is displayed to indicate that the program is being installed. To cancel the installation, click on **[Cancel]**.

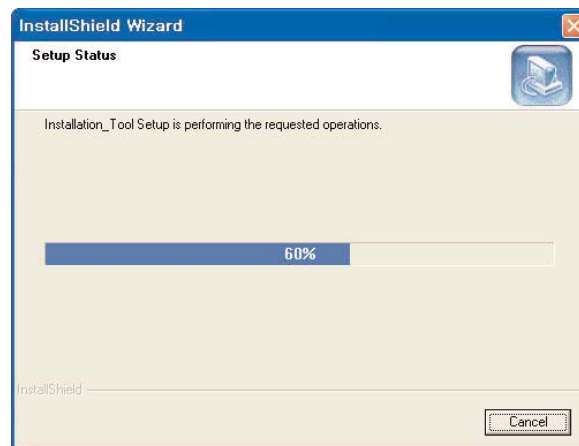


Figure 3. Setup Status

4. When the wizard finishes installing the program, the following screen (see Figure 4) is displayed. Click on **[Finish]** to close the window.

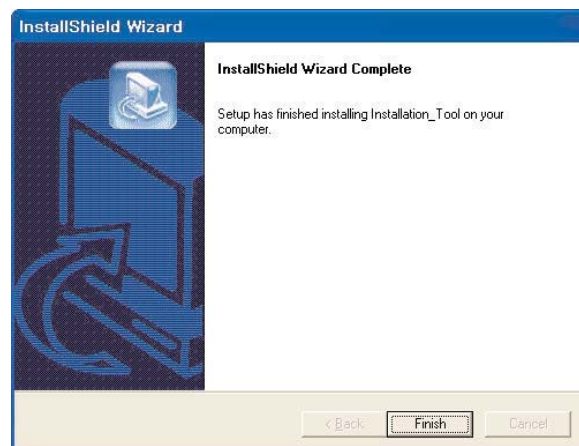



Figure 4. Wizard Complete

Connecting the PC to the OfficeServ

Connect the PC to the OfficeServ system via LAN or Modem connection.

1. The recommended connection method is via a LAN because it is a much faster connection.
2. If it is local connection, please be sure that the Internet Protocol (TCP/IP) properties of the PC matches the subnet of the OfficeServ system.

Launching Installation Tool

1. There are two different ways to launch the I/T program.
 - 1.1 From the Windows Taskbar, click on **[Start]** → **[Programs]** → **[Samsung Application Program Module]** → 'Installation Tool'.
 - 1.2 From the desktop, double-click the 'Installation Tool' icon . The main screen (see Figure 5) of the I/T is displayed.

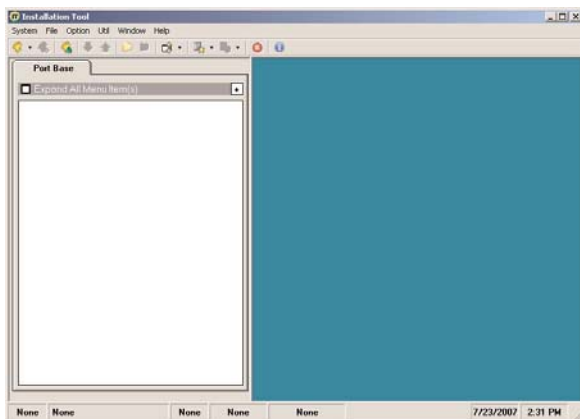


Figure 5. Main Screen

2. Click on **[System]** → **[Link Control]** to enter the IP address of the OfficeServ system and click **[Apply]**. Click on **[Close]** to close the dialog (see Figure 6).

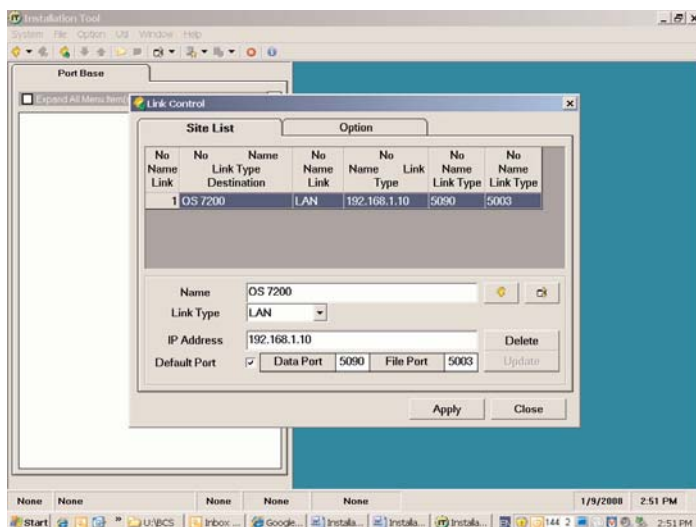


Figure 6. Link Control

3. Click on **[System]** → **[Connect]** to connect to the OfficeServ system. Enter the correct 'ID' and 'Password' then click on **[OK]**. **Default ID is admin and password is samsung** (see Figure 7).

Note: This is not the same password that is used for KMMC programming.



Figure 7. Login

4. The following screen will be displayed (see Figure 8).

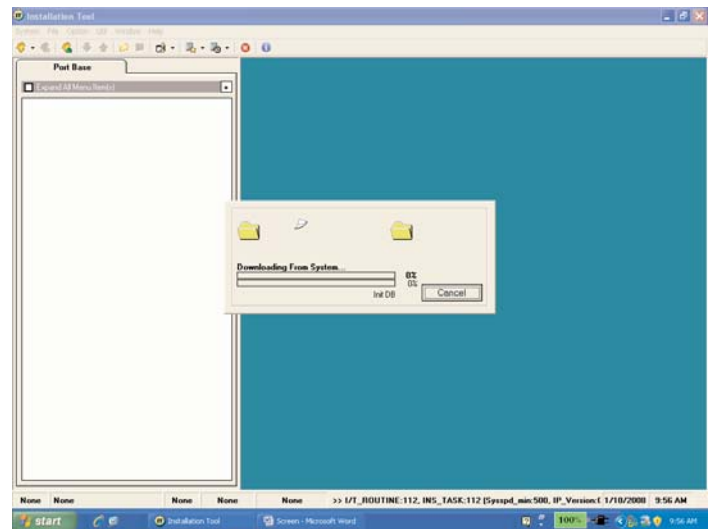


Figure 8. Downloading From System Screen

5. The following screen will be displayed when the Installation Tool is connected to the OfficeServ system (see Figure 9).

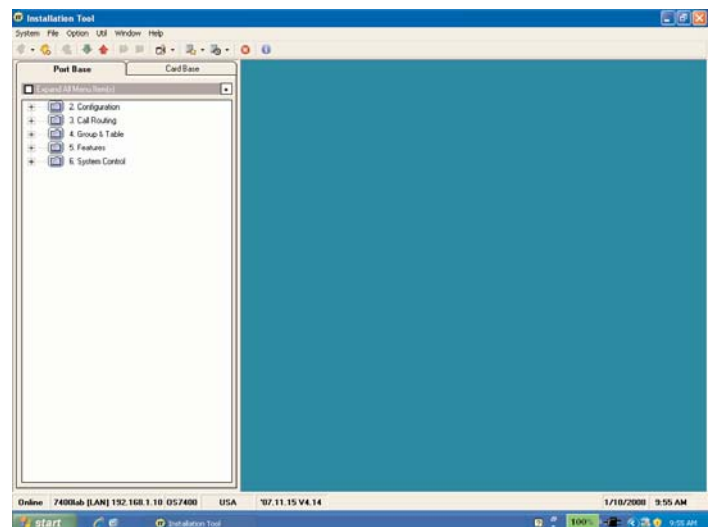


Figure 9. Installation Tool Main Screen

6. "Installation Tool" is now ready to be used. For more detail information please refer to the "Installation Tool" User Manual or Help Menu.

