

Bulletin No.: 2012-10-16

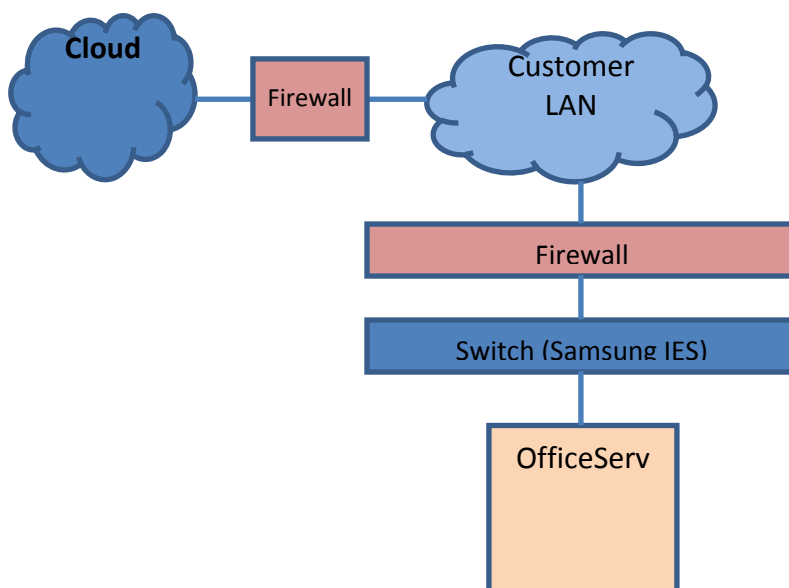
October 16, 2012

Best Practices for Installing Samsung OfficeServ™ Equipment in a Data Network Environment

Regardless of whether the telephone equipment is installed with a connection to the internet or just has a connection to the office LAN, one can never be certain of the nature of data traffic that the phone system is exposed to. Therefore, it is very important that due consideration is given to the security of the phone system as an element of the data network.

Last week the internet was the media for serious malicious attacks that did cause havoc and critical compromise to many business institutions within the United States. You may wish to review your news sources for reports on this activity. Whether this was related or not, it is a fact that many dealers had multiple sites compromised by unwanted internet requests. Samsung's Technical Support activity peaked Wednesday and Thursday last week coincident with the height of the news reports of internet attacks. However sites that had well-designed firewall architectures were untroubled.

That best practice used by many equipment providers is to have a layered firewall approach and ensure that a dedicated firewall is installed between specialized equipment and the enterprise network. Samsung dealers should be no different. As a practice it is recommended that a firewall be dedicated to the equipment as in the diagram below. This provides both assurance that the equipment is secure and some independence from a customer's IT department.



Samsung Telecommunications America
Business Communications Systems
1301 East Lookout Drive
Richardson, TX 75082

Best Practices for Installing OfficeServ™ Equipment in a Data Network Environment

The table below provides a list of ports that are used by OfficeServ. Use this table to set up the dedicated firewall.

SYSTEM PORT USAGE

Module	Service	Protocol	Port
MP	SIP	UDP/TCP TCP	5060 5061
	H.323	TCP UDP	1720 1719
	SPNET	TCP	6100
	ITP	UDP	6000, 9000
	WIP	UDP	8000, 8001
	MVS	TCP	9012
	DM	TCP	5090, 5091
	DM FTP	TCP	21
	DM Data	TCP	5090
	DM File Control	TCP	5003
	DM Embedded VM	TCP	6001, 6002
	ITT	TCP	5090, 5091
MGI16 MGI64 OAS	MGI	UDP	30000 ~ (2*Num of Ch -1)
	MPS	UDP	40000 ~ (2*Num of Ch -1)
	RTG	UDP	45000 ~ (2*Num of Ch -1)
CNF24	Conference	UDP	30000 ~ (2*Num of Ch -1)
	FTP	TCP	21
	Upgrade Port	TCP	60000
SVMi-20i	VM Control	TCP	6001, 6002
	VM	UDP	30000 ~ (2*Num of Ch -1)
	FTP	TCP	21
	Upgrade port	TCP	60024

If you have any questions about this or any other Technical Support bulletins please contact Samsung Technical Support by phone at 1-800-737-7008 or by email at: BCS.Support@Samsung.com

Samsung Telecommunications America
Business Communications Systems
1301 East Lookout Drive
Richardson, TX 75082