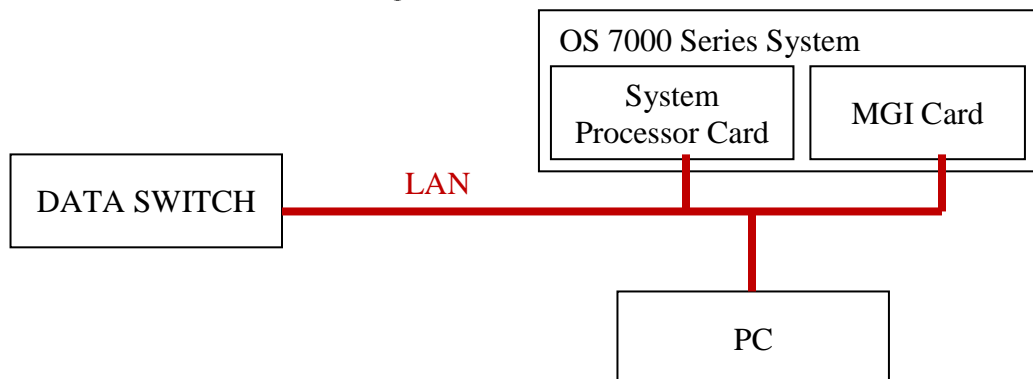


## **MGI16/MGI64 Card V1.26 Upgrade Process**

**CAUTION:** This process assumes that you are experienced working with computers and data networks. If you are not comfortable working with PCs and data networks it is recommended that you stop and seek assistance with the upgrade process from Samsung Technical Support or another experienced technician familiar with the process.

**NOTE:** This process assumes you have HyperTerminal installed on your PC. The upgrade can be performed with any terminal emulation program or from a DOS prompt, but exact steps used and displays seen may vary slightly.

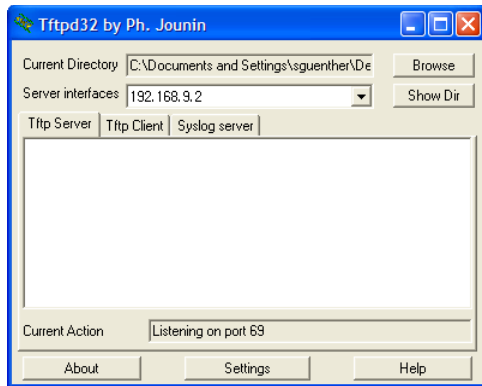
1. Connect a PC, the system processor card, and the MGI16/MGI64 card to a common LAN (similar to the following):



2. Create a folder on the PC desktop called "Upgrades"

**NOTE:** This isn't a requirement; it is simply a recommendation to keep software upgrades organized.

3. Unzip the MGIXX\_V126\_(090826).zip file (obtained from the GSBN) to this folder
4. Open the Upgrades folder, locate the "tftpd32" file, and double-click it to run the TFTP server
5. You should see the following window:



6. The TFTP server is now configured and ready to receive update requests. Make note of the IP address displayed in the "Server interfaces" text box.
7. Power up the OS 7000 Series system
8. In **MMC 830** set the system IP address to an address on the same network as the PC (if not already configured).

**NOTE:** If changes were made you will need to reboot the system for changes to take effect.

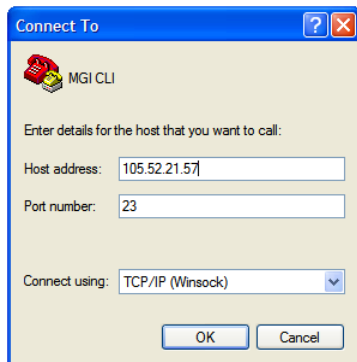
9. In **MMC 831** set the MGI card IP address to an address on the same network as the PC and system processor card (if not already configured).

**NOTE:** If changes were made you will need to reboot the MGI card for changes to take effect.

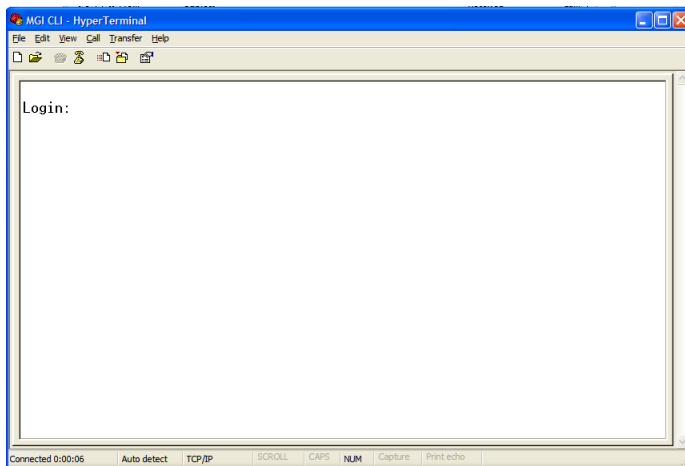
10. After setting/verifying the IP addresses open HyperTerminal on the PC
11. Create a new connection called "MGI CLI"



12. Set "Connect using" to "TCP/IP (Winsock)" and enter the MGI card IP address in the "Host address" field

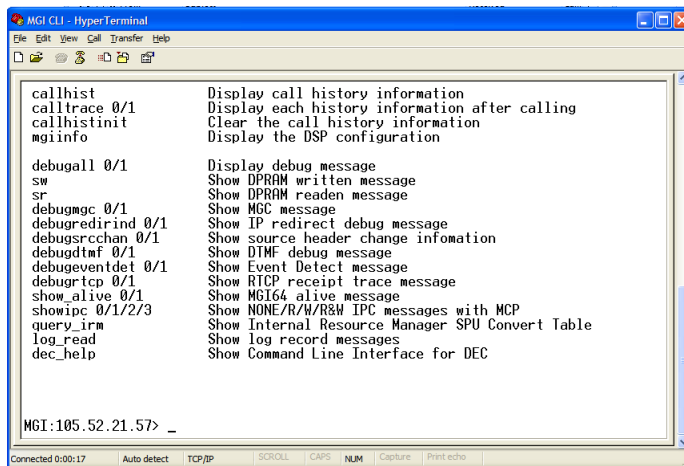


13. Click **OK** to connect to the MGI card. You should be presented with a "Login:" prompt



14. Enter the username "mgi" and press enter
15. At the "Password:" prompt enter "mgi12345"

16. The main login menu is displayed



```
callhist      Display call history information
calltrace 0/1 Display each history information after calling
callhistinit Clear the call history information
mgiinfo       Display the DSP configuration

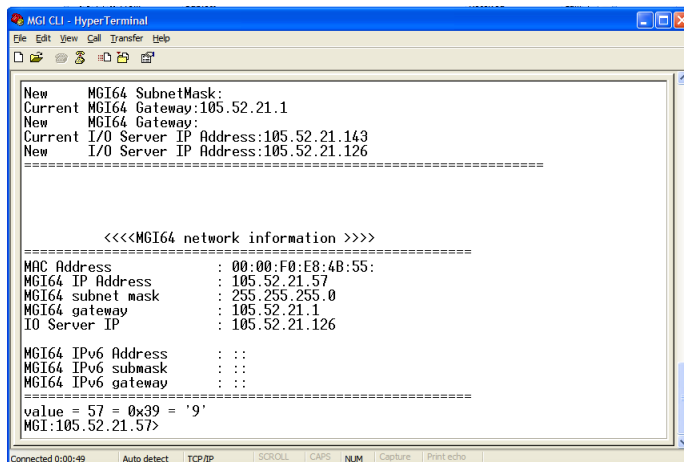
debugall 0/1  Display debug message
sw        Show DPRAM written message
sr        Show DPRAM readen message
debugmgc 0/1  Show MGC message
debugredirind 0/1 Show IP redirect debug message
debugsrcchan 0/1 Show source header change information
debugdtmf 0/1 Show DTMF debug message
debugeventdet 0/1 Show Event Detect message
debugrtcp 0/1 Show RTCP receipt trace message
show_alive 0/1 Show MGI64 alive message
showipc 0/1/2/3 Show NONE/R/W/R&W IPC messages with MCP
query_irm    Show Internal Resource Manager SPU Convert Table
log_read     Show log record messages
dec_help     Show Command Line Interface for DEC

MGI:105.52.21.57> _
```

17. Type the command “allset” and press enter.

18. You will be prompted to enter the MGI card IP address, subnet, and gateway. If the displayed values are correct you do not need to type anything; simply press enter to confirm.

19. You will then be prompted to enter the “I/O Server IP Address”. This is the IP address of the PC (which is shown in the “Server interfaces” field of the TFTP application shown in step 5). Enter the IP address and press enter.



```
New MGI64 SubnetMask:
Current MGI64 Gateway:105.52.21.1
New MGI64 Gateway:
Current I/O Server IP Address:105.52.21.143
New I/O Server IP Address:105.52.21.126

=====

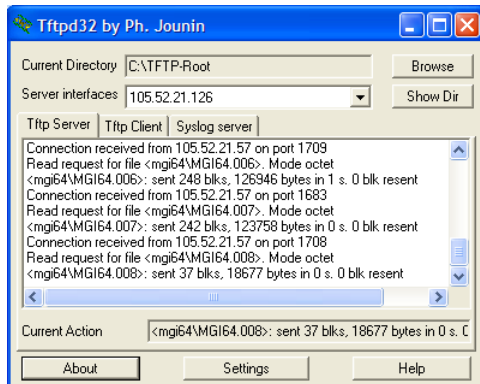
<<<<MGI64 network information >>>>
=====
MAC Address       : 00:00:F0:E8:4B:55:
MGI64 IP Address  : 105.52.21.57
MGI64 subnet mask : 255.255.255.0
MGI64 gateway     : 105.52.21.1
I/O Server IP     : 105.52.21.126

MGI64 IPv6 Address : ::
MGI64 IPv6 submask : ::
MGI64 IPv6 gateway : ::

=====
value = 57 = 0x39 = '9'
MGI:105.52.21.57>
```

20. When the above screen is displayed type the command “reboot” to restart the MGI card and perform the upgrade. ***This will cause HyperTerminal to disconnect.***

21. You should see activity from the TFTP application window as the files are downloaded by the MGI card.



22. After approximately 45 seconds the MGI card upgrade will be complete. Go to **MMC 727** to verify that the software version of the MGI card shows **"09.08.26 V1.26"**.