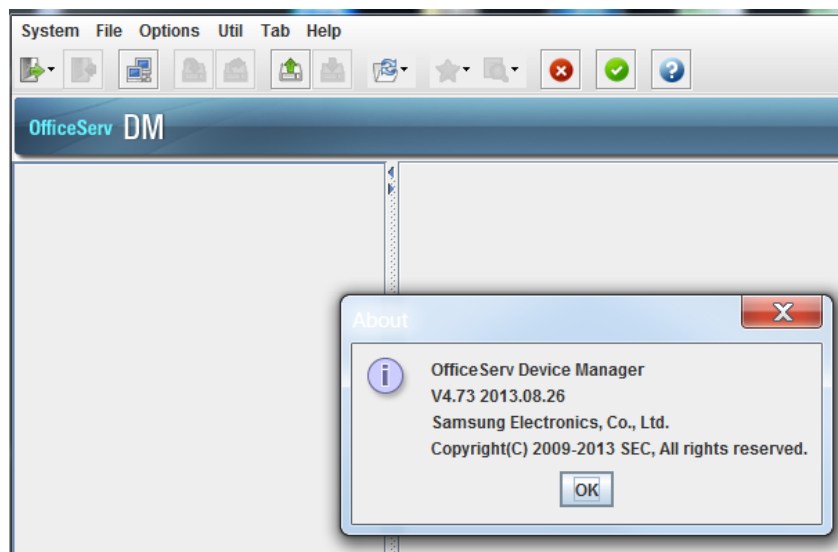


Bulletin No.: 254\_Device\_Manager\_V4.73

September 6, 2013

## Device Manager Version V4.73 Supporting Java 7

Samsung is pleased to announce the release of **standalone** Device Manager Version V4.73 dated (2013.08.26) with support for Java 7 to support the OfficeServ 7000 family of systems.



Note: The current Embedded Device Manager does not support Java 7.

### NEW FEATURES & ENHANCEMENTS

- Device Manager Version 4.73 runs in a Java 7, Update 25 environment.A

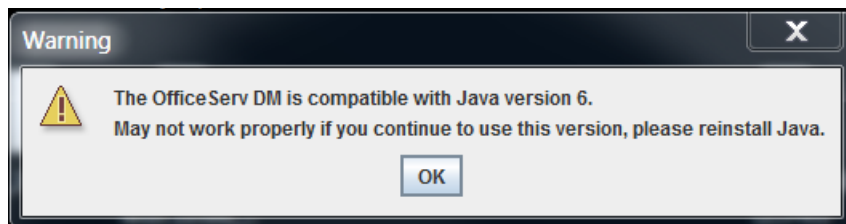
**BUG FIXES in Device Manager V4.73**

The following bugs in Device Manager are fixed in V4.73

1. RS Key was not able to be configured on DM. It has been fixed.
2. When you upload all of DM files with VM files through the file control menu on DM, DM failed to upload VM files. It has been fixed.
3. Extension value of GPIK was limited to 1 -10. Max value is changed to 1 - 99.
4. In DM menu 3.1.6 the \* & # character could not be inserted into next route of <Second LCR Digits>. It has been fixed.
5. When DB file of SVMi-20i (V6.02) was restored through DM 8.7.6, it failed due to large compressed file. DM is changed to be able to upload uncompressed file (\*.tar).
6. In DM menu 5.9.1, when you clicked the "Find" icon (Search in Current Page) DM would lock up. It has been fixed.

**ADVISORY NOTICE**

Attempting to launch any earlier version of Device Manager on a PC that is running Java 7 will cause the following message to pop up. You cannot run Device Manager V4.70 or earlier after upgrading to Java 7.

**AVAILABILITY**

This new Device Manager software may be downloaded from the Samsung GSBN website by browsing to Communication >> Technical Support >> Downloads >> Released Software.

**DOCUMENTATION & TRAINING**

The bug fixes listed above do not require any changes to supporting documentation. This new software does not require additional certification to obtain Technical Support, if you are already certified on the OfficeServ 7000 systems.

*If there are any questions regarding this notice, please contact your Regional Sales Manager or Samsung Technical Support via email at [bcs.support@samsung.com](mailto:bcs.support@samsung.com).*