

Bulletin No.: 208_OS_7200_S

December 14, 2009

New OfficeServ™ 7200-S SMB Solution: 16 ~35 Stations



Samsung Telecommunications America is pleased to announce the general availability of the OfficeServ 7200-S beginning December 14, 2009.

We are expanding the OfficeServ 7000 Series family with the addition of the OfficeServ 7200-S. When the OfficeServ 7100 is not big enough and the OfficeServ 7200 is too expensive, the OfficeServ 7200-S is the perfect fit. This is a single cabinet 7200 with a new MP20S processor designed to reduce cost and use less slots by embedding the OfficeServ feature package, SVM, MGI and MPS applications on a single card. **Think of this like an OfficeServ 7100 but with five universal slots.**

The OfficeServ 7200-S (S stands for Single cabinet) provides a price competitive solution in the 16 to 35 station range to replace the recently manufactured suspended OfficeServ 100 system that was so popular and served so well for a long time. By replacing the SVMi-20E voice mail card with four ports of SVM embedded and with two optional ports (5 & 6) one universal slot is not required and overall VM price is reduced. In a 10 line by 25 station configuration the 7200-S can be approximately **30% less** than a comparable 7200 system.

Samsung Telecommunications America
Business Communication Systems
1301 East Lookout Drive
Richardson, TX 75082

OfficeServ™ 7200-S Product Release

Another huge advantage is the embedded MGI ports on the MP20S card. When one remote IP telephone is required, purchase a single MGI port license instead of an expensive OAS card with 16 MGI ports. And once again there is no need to use one universal slot.

At times, a configuration may require that odd ball 17th DLI port, the one off SLI port and maybe the 9th or 17th trunk. Before the 7200-S, this would require one additional OS-8DLI, OS-16MW-SLI and OS 8TRK cards using three additional universal slots, maybe even an expansion cabinet. Now the 7200-S can use the flexible UNI card and daughter boards from the OS-7100 to accomplish this using only one universal slot and less cost.

In keeping with the Samsung mission to deliver enterprise class features and functionality to small businesses we offer the same, robust, time proven, market tested feature package offered on all the Samsung OfficeServ 7000 systems products.

- **FLEXIBLE!** Configure the OS 7200-S how your customers need it: TDM or IP Phones, iDCS or DS phones, Analog, PRI or SIP Trunks, Converged or Pure IP, Squared or Customized, Main Office or Branch Office, Networked or Standalone.
- **EXPANDABLE!** Grow as your company grows. This system can be expanded in various combinations of digital phones, IP phones, single line phones or CO lines. When you outgrow the OS-7200-S just migrate the common OS 7000 interface cards and telephones to the larger 7200 or even to the 7400 platforms.
- **MANAGING REMOTELY!** Manage your OfficeServ 7200-S systems from anywhere in the world using the *Installation Tool/Web Management* for administration and configuration of the phone system and Automated Attendant/Voice Mail. Just download the application from the GSBN web site and you are up and running. All you need is Internet Explorer 6.0 and internet/intranet access. The Web Management Server is embedded on the MP20S processor.
- **VOIP FOR SMALL BUSINESSES!** The OfficeServ 7200-S is an IP TELEPHONY PLATFORM. You can license up to 6 channels of MGI for VoIP/SIP trunks and add up to three OfficeServ Application Service (OAS) cards to expand up to 54 MGI channels.
- **VOIP TRUNKS ON THE SMALL END!** Another advantage of the OfficeServ 7200-S is it is SIP compatible. Use the SIP trunking licenses to provide VoIP connectivity to the cost effective SIP Service Provider of your choice. This means up to 64 SIP trunks.
- The SIP service also provides Direct Inward Dialing (DID) that will allow each station user to have their individual published numbers. In some cases, this may eliminate the need for a live or automated attendant to answer incoming calls. Incoming calls are directly routed to the intended user. How about that, DID on a small system.

OfficeServ™ 7200-S Product Release

- **CORPORATE COMMUNICATIONS!** Now here is a real solution. The main office has a few employees that work at a branch office(s) location. The 7200-S is the perfect fit. It can be networked to the main office using SPNet over IP for convenient, cost effective communications back to the corporate headquarters. In addition, use the always dependable copper trunks to provide local trunking, 911, and toll bypass from the branch office location with survivability should the IP connections go down.

NEW OFFICE 7200-S HARDWARE & LICENSES

The following table lists the **NEW** items for the OfficeServ 7200-S system. There are just seven new part numbers.

	Part Number	Name	Description
①	F-B-OS7200S-01	7200-S KIT	OS 7200-S Starter Kit Contains: 7200 Cabinet, MP20S Card, SD card with software program and 4 ports of Voice Mail
②	OS-720WSDC/XAR	OS-7200-S SD	1GB SD card with (version 4.45 or higher) software
③	OS-720BMPS/XAR	OS-MP20S SD	MP20S processor card for OfficeServ 7200 system includes 4 ports of Voice Mail
④	KP-AP7XWMG/STD	OS 7200-S MGI	7200-S MGI License (sold in increments of 1 ~ 6)
⑤	KP-AP7XWVM/STD	7200-S VM	Single port Voice Mail expansion license. (maximum 2)
⑥	KP-AP9XWTS/STD	7200-S SIP TRK	7200-S SIP per trunk license
⑦	KP-AP9XW2S/STD	7200-S SPNet	7200-S SPNet license

■ MP20S Processor Card

At the heart of the OfficeServ 7200-S system is the new MP20S processor. Very similar in design to the MP10a on the OfficeServ 7100 it has the following embedded hardware and applications.

Embedded Automated Attendant/Voice Mail Ports

The MP20S processor card includes 4 ports of embedded Automated Attendant and Voice Mail standard at no additional charge. When additional ports of AA/VM are required, order the optional single port Voice Mail Expansion License listed above. Purchase one of these additional licenses to have 5 ports or buy two of these to have the maximum of 6 AA/VM ports.

Samsung Telecommunications America
Business Communication Systems
1301 East Lookout Drive
Richardson, TX 75082

OfficeServ™ 7200-S Product Release

Voice Mail

- 6 ports of AA/VM. 4 ports standard and 2 expansion ports.
- Over 60 hours of voice mail storage with 3 languages.
- Up to 256 voice mail subscribers.
- Deliver voice messages to any email address as a .wav attachment (E-Mail Gateway).
- AMIS network support.

NOTE: The expansion Voice Mail license keys can be ordered from the Samsung GSBN site <http://www.samsunggsbn.com>

■ **MGI Channels (Media Gateway Interface)**

The 7200-S includes 6 MGI channels. These embedded channels can be made available by purchasing one port license up to 6 channels maximum. The embedded MGI supports the following features:

- Samsung IP desk phones/IP wireless handsets/SIP telephones/OfficeServ SoftPhones
- IP Networking (Network multiple systems over an IP Network)
- G.729 (8K) Codec, G.723.1, G.711, G.729A Codecs
- SIP Trunks (H.323 not supported on the OS 7030)
- T.38 Fax CODEC
- In-band or Out-of-band signaling of DTMF tones

NOTE: OS-7200-S MGI license keys can be ordered from the Samsung GSBN site <http://www.samsunggsbn.com>

■ **Common Resources**

The OfficeServ 7200-S has the following shared resources embedded into the MP20S at no additional charge:

- 6 Five-Party Conference Circuits
- 6 Caller ID DTMF Receivers/Transmitters
- 14 DSPs for DTMF Receiver and Executive Mobex feature
Anywhere from 6 to 8 are dynamically allocated for either function
- 16 MPS (Media Proxy Server) channels providing 8 MPS calls

OfficeServ™ 7200-S Product Release

■ MISC Port

The MP20S processor card provides miscellaneous functions at no additional charge. The 8 pin MISC connector on the front panel is used to connect BGM/MOH input, external paging output, and connection to two dry contact relays. These relays can be used for external paging zone control, common bell, or loud bell.

■ Optional Application Service Card (OAS) (V2.01)

A major contribution to achieving the competitive pricing on the OfficeServ 7200-S is the introduction of V2.01 software for the OAS card. With this new software the existing OAS card can now deliver up to 16 MGI channels as well as Executive Mobex receivers and MPS channels. The OAS card is half the price of the current MGI-16.

If you have OAS cards with V1.0 software on them in stock, you can go to GSBN to download V2.01 and upgrade them to take advantage of these new capabilities and cost savings.

The MGI-16 and MGI-64 are not supported on the OfficeServ 7200-S. You must use embedded MGI channels with licenses or install up to three OAS cards.

OS 7200-S COMMON & PERIPHERAL EQUIPMENT

The following OfficeServ 7000 cards and peripheral equipment are compatible with the OfficeServ 7200-S system. Mix and match these to configure the system as required.

Part Number	Name	Description
KP-OSDBDL2/XAR	OS 16DLI-2	16 port DLI2 digital line interface card
KP-OSDB16M/XAR	OS 16MW-SLI	16 port analog SLI card with message waiting
KP-OSDB8H3/XAR	OS 8COMBO2	Combo card with 8 DLI and 8 SLI
KP-OSDB8D/XAR	OS 8DLI	8 port DLI card
KP-OSDB8S2/XAR	OS 8SLI2	8 port analog SLI card
KP-OSDB8T2/XAR	OS 8TRK2	8 port loop trunk card with CID
KP-OSDB16T/XAR	OS 16TRK	16 port loop trunk card with CID
KP-OSDBTE1/XAR	OS TEPR1a	T1 / PRI trunk card (PRI only on 7200-S)
KPOS74BOAS/XAR	OAS Card	Optional Application Service Card (V2.0 for 7200-S)
KPOS74BMOD/XAR	OS Modem Card	Universal Modem for all 7000 series systems
KPOS71BUNI/XAR	OS-UNI Card	Universal card. This card has three connectors to house up to 3 station/trunk modules
KPOS71BDLM/XAR	OS DLM	4 port DLI daughter board for UNI card

Samsung Telecommunications America
Business Communication Systems
1301 East Lookout Drive
Richardson, TX 75082

OfficeServ™ 7200-S Product Release

Part Number	Name	Description
KPOS71BTRM/XAR	OS 4TRM	4 port loop start trunk board for UNI card
KPOS71BSLM/XAR	OS SLM	4 port SLI daughter board for UNI card
KPOS71BSWM/XAR	OS 4SWM	4 port LAN switch module. (PoE not supported)
KP-OSDBPL2/XAR	OS PLIM2	16 port LAN Interface Module with PoE
KPOS74BGLT/XAR	OS GPLIMT	Gigabit LAN Module with PoE
KP-OSDBRES/XAR	OS7150 CAB	7150 Supplemental Power Supply Cabinet Does Not include PS Module
KPOSDBPREP/XAR	OS 7150 CBL	7150 Power Supply cable
KP-OSDBREU/XAR	OS 7150 PS	7150 Supplemental Power Supply Module
KP-OSDBPSU/XAR	OS7200 CAB	OS7200 Universal Cabinet

SYSTEM CAPACITY

STATIONS	Wireless Handsets	64
	Standard SIP Phones	
	Analog Phones	64
	Digital Phones	
	Samsung IP Phones/SoftPhone	64
COMBINED TOTAL OF ALL STATION TYPES CANNOT EXCEED: 64		
TRUNKS	Standard SIP Trunks	32
	Standard H.323 Trunks	
	Analog Trunks	60
	Digital Trunks PRI Only	46
	Networking Trunks (SPNET)	32
COMBINED TOTAL OF ALL TRUNK TYPES CANNOT EXCEED: 60		
MAXIMUM STATIONS + TRUNKS + VOICE MAIL		130

SOFTWARE

The initial release of the OfficeServ 7200-S is software version V4.45a dated 09.12.12.

Installation Tool version 1.43b or higher is required to support OS-7200-S with version 4.45a software load.

Samsung Telecommunications America
Business Communication Systems
1301 East Lookout Drive
Richardson, TX 75082

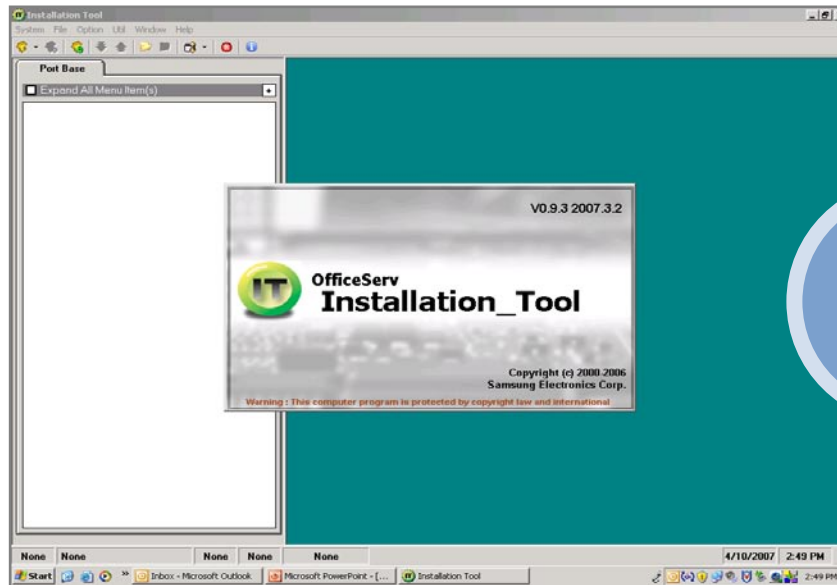
OfficeServ™ 7200-S Product Release

PROGRAMMING AND ADMINISTRATION

There are three methods to program the OfficeServ 7200-S.

1. **KMMC:** Program from any display keyset on the system.
2. **Installation Tool (Phone System Configuration & Administration)**

The OfficeServ 7200-S can be managed with the OfficeServ Installation Tool. Upload and download system databases to your PC, configure and program the system locally or remotely over an IP network or modem connection, view customer's database offline, perform software upgrades. This application software can be loaded locally on a PC.



3. **Web Management (Voice Mail/Automated Attendant Configuration and Administration)**

The OfficeServ 7200-S embedded Samsung automated attendant/voice mail is managed through the Web Management interface. The web management tool runs on an embedded Linux operating system with the Apache Web Server loaded. The Web Management console can be accessed from Internet Explorer 6.x. It allows configuration, backup/restore and user account management.

Samsung Telecommunications America
Business Communication Systems
1301 East Lookout Drive
Richardson, TX 75082

OfficeServ™ 7200-S Product Release

CTI APPLICATIONS

The OfficeServ 7200-S supports the same suite of OfficeServ applications as the other OfficeServ systems:

- OfficeServ Link , OfficeServ EasySet,
- OfficeServ Operator
- OfficeServ Call
- OfficeServ DataView

OfficeServ Open TSP is available by special request.

ORDERING

Effective December 14, 2009 the new OfficeServ 7200-S system can be ordered online on GSBN or by using the Excel Order Form (available for download on GSBN [www.samsunggsbn.com] under Communication→Sales and Marketing→Downloads→Order Form).

The OfficeServ 7200-S system is listed after the 7200 and before the 7100 on the price list.

Notes:

1. The SIP trunk license is now specific to the system type. You must order SIP per trunk License for OS7200-S to ISTP.
2. There is now a charge for SPNet and the license is specific to the system type. You must order SPNet for OS7200-S. The price of SPNet is offset by the reduction in MGI cost by using the OAS card.

Resellers: Please contact your Distributor for ordering information.

GUIDED SELLING SYSTEM (GSS)

The Guided Selling System (GSS) will be updated in late first quarter of 2010 to include the OfficeServ 7200-S system.

OfficeServ™ 7200-S Product Release

DOCUMENTATION

OfficeServ 7200-S Sales Brochure

An OfficeServ 7200-S brochure is available for ordering using normal Samsung ordering procedures (F-L-SB-OS7200S). A PDF of the brochure is available on the GSBN web site (<http://www.samsunggsbn.com>) under Communications, Sales and Marketing, Downloads, Brochures.

Documentation & Technical Manual

The OfficeServ 7200-S General Description, OfficeServ System Administration Guide, OfficeServ User Guides, Installation Guide, and Technical Manual fully explain all OfficeServ 7200-S features and functionality. The OfficeServ 7200-S Technical Manual zip file includes the new 7000 series Common Programming Procedures manual. The Voice Mail User Guide is included in the Keypad User Guides in the User Instructions Section of the Technical Manual. These documents are available on the GSBN website under Communication, Technical Support, Downloads, Technical Manuals. Printed copies of these documents can be purchased online using the Samsung-FedEx Office Print-on-Demand web site (<https://docstore.fedex.com/samsung>). If you have questions regarding the FedEx Office web site or how to access this site, contact Samsung Customer Service.



OfficeServ 7200-S Technical Manual—Home Page

OfficeServ 7200 Product Presentation

The OfficeServ 7200-S Product Presentation is also available on the GSBN web site under Communications, Sales and Marketing, Downloads, General Description.

This bulletin, the above mentioned presentation and the listed technical documents will provide the necessary information to begin proposing, installing and supporting the OfficeServ 7200-S system.

Samsung Telecommunications America
Business Communication Systems
1301 East Lookout Drive
Richardson, TX 75082

OfficeServ™ 7200-S Product Release

TRAINING/CERTIFICATIONS

Samsung provides a convenient online *OfficeServ 7200-S Transition Course (#1050-01-0L) for technicians to access and learn about the 7200-S on their own time. The cost of the 7200-S course is \$75.00.*

The OfficeServ 7100 Online Certification Course (#1030-03-0L) is a prerequisite to OS 7200-S Transition Course and must be completed prior to taking the 7200-S Transition Course. The course covers the differences between the OS7100 and OS7200-S systems. Successful completion of this course is required to receive FREE Technical Support on the 7200-S system. Additional certifications for advanced applications on the 7200-S are available in other Certification Courses.

An instructor led course is **not** available for OfficeServ 7200-S certification.

To purchase this course, go to <https://samsung.plimus.com> or login to the GSBN website and click on the “Buy Certification Courses” button from the Home Page; you will be redirected to another website. Samsung has contracted Plimus to process secure online orders and collect payments. Read the instructions on the landing page before purchasing a course. It is also very important that you meet all prerequisite requirements before you purchase a course.

Click on the Online Courses button and select the OfficeServ 7200-S online course. Fill out all Pre-required information. If you are purchasing the course for someone other than yourself, please enter the student’s Samsung Online Training ID and their information (Samsung account number, company name, student name, phone number and e-mail) in the fields provided.

If you have ordered a course before, enter your Plimus username and password to log in and place your order. If this is your first time ordering, create a new account with Plimus via the New Account form.

After your order has been processed you will receive three e-mails: 1. From Samsung Training Department (BCS.Training@samsung.com) acknowledging your order, 2. From Plimus Sales with the Receipt for your Payment and the order reference number, and 3. From Samsung Training Department informing you that the course is available on the LMS for you to launch. Please allow 24 business hours for the course to appear on your queue.

If you have questions regarding this training course please contact Samsung Technical Training at 1-800-876-4782 or via e-mail at bcs.training@samsung.com.

If you have any questions regarding this notice, please contact your Regional Sales Manager or your Customer Service Representative at the number provided below. You can also email us at BCS.Sales@samsung.com.

Samsung Telecommunications America
Business Communication Systems
1301 East Lookout Drive
Richardson, TX 75082