



Bulletin No. 129_OfficeServ_Apps

April 4, 2005

OfficeServ Application Suite

(For iDCS 100 and iDCS 500 Release 2 Systems)

Product Release

Samsung Telecommunications America is pleased to announce the general availability of the OfficeServ CTI applications suite.

The OfficeServ application suite consists of a number of applications that enhance the functionality and usability of the Samsung iDCS 500 and iDCS 100 Release 2 telephone systems.

OfficeServ Link	Version 2.1.1.3
OfficeServ EasySet	Version 2.8.0
OfficeServ Call	Version 5.1.7.0
OfficeServ Operator	Version 1.3.4.0

These applications, when installed on one or more Windows computers connected to the local area network, work together to provide an additional range of system configuration, call control, and information handling features to the Samsung iDCS product line of telephone systems.

Enterprise IP Solutions

OfficeServ

OfficeServ Link

The OfficeServ Link application provides a logical connection between the iDCS telephone system and a Windows® based computer acting as an applications server. This Link provides the basis of the communications between the Samsung iDCS telephone system and the OfficeServ CTI Applications.

Samsung Telecommunications America
Business Communications Systems
1301 East Lookout Drive
Richardson, TX 75082

Samsung OfficeServ Applications Suite Product Release

OfficeServ EasySet

The OfficeServ EasySet application uses Internet Browser technology to provide system users with a quick and easy way to configure their Samsung digital telephones, IP phones, and IP Softphones.

OfficeServ Call

The OfficeServ Call application provides computer-equipped users with a comprehensive range of telephony and call management functions at the desktop. These features include dialing, screen popping, call logging, and many more.

OfficeServ Operator

OfficeServ Operator is fully integrated with your voice and data infrastructure to maximize the responsiveness of your organization. With the simplicity of "point and click" operation or use of a keyboard, incoming and internal calls can be effectively managed using a variety of features.

OfficeServ OpenTSP

OfficeServ OpenTSP provides an industry standard TAPI Compliant interface for 3rd party developers to create custom applications.

OFFICESERV APPLICATION SUITE - TYPICAL INSTALLATION

The OfficeServ Link application is installed on a Windows based PC connected to the local area network. This PC acts as an application gateway server for the whole range of OfficeServ applications. A typical installation is shown in the following illustration. In the illustration OfficeServ Link and EasySet are both installed on the Link Gateway server. The OfficeServ Call and OfficeServ Operator application are installed on the client personal computers.



Samsung Telecommunications America
Business Communications Systems
1301 East Lookout Drive
Richardson, TX 75082

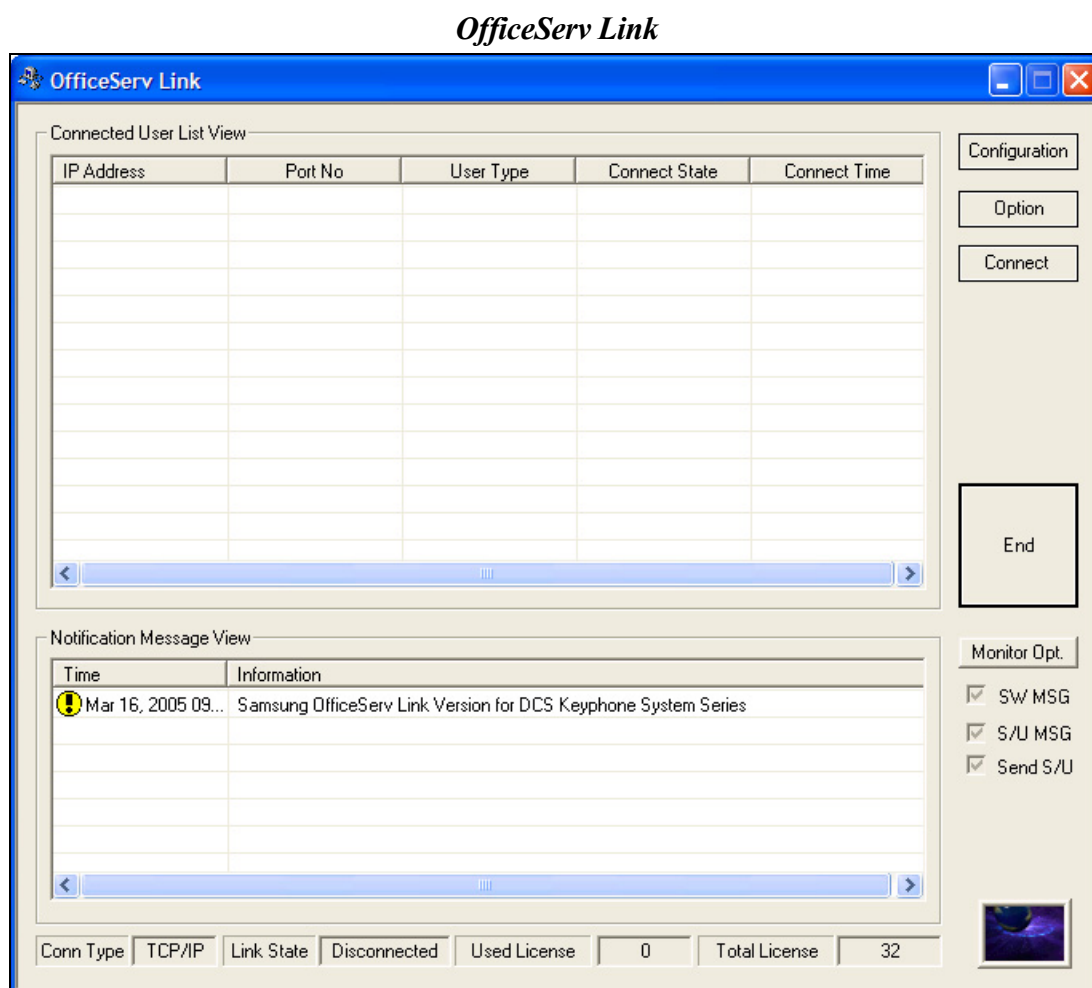
Samsung OfficeServ Applications Suite Product Release

OFFICESERV LINK GENERAL DESCRIPTION

OfficeServ Link is a software application that links the Samsung iDCS telephone system to a Windows-based computer. This PC then acts as an application gateway server for the whole range of OfficeServ applications. OfficeServ Link is installed on a customer provided computer that must be dedicated to the sole use of OfficeServ Applications.

OfficeServ Link enables other software applications (both Samsung and third party) to interface with the Samsung iDCS product line of telephone systems.

The Link application includes a licensing module that must be used to register and authorize client applications running on the iDCS system.



**Samsung Telecommunications America
Business Communications Systems
1301 East Lookout Drive
Richardson, TX 75082**

Samsung OfficeServ Applications Suite Product Release

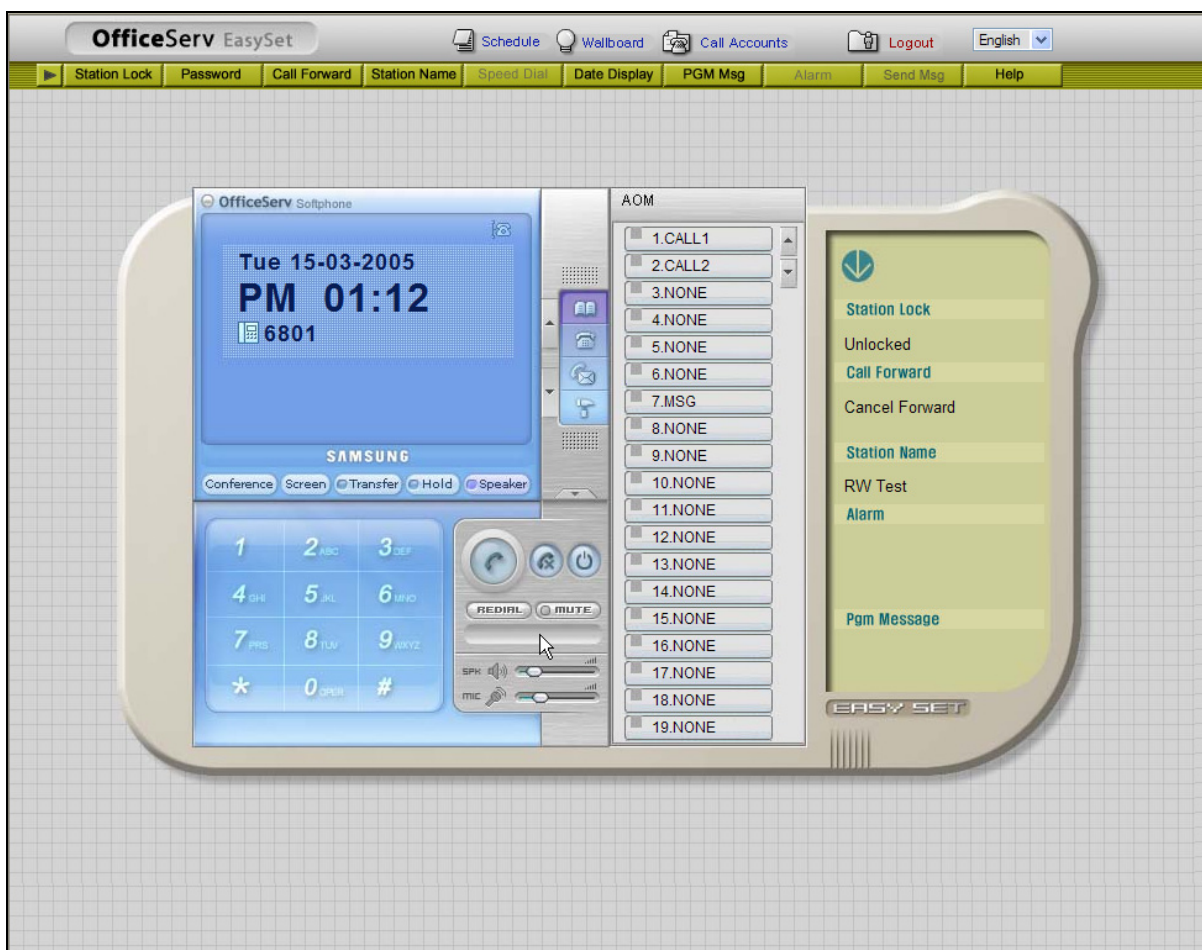
OFFICESERV EASYSET GENERAL DESCRIPTION

The OfficeServ EasySet application is a management tool designed to give OfficeServ users a simple and friendly way to configure the feature and button assignments on their Samsung iDCS Keyset.

EasySet uses Internet Explorer to display a graphical representation of the users' telephone. Using a set of intuitive actions, the user can configure many of the options available.

OfficeServ EasySet is a software application that is loaded on a Customer Provided Computer. EasySet can also be loaded on the same computer as OfficeServ Link. In addition, EasySet requires Microsoft IIS (Internet Information Server) to be pre-installed on this computer before OfficeServ EasySet can be installed and configured. Microsoft IIS comes free of charge with Windows 2000 and Windows XP Professional operating systems. OfficeServ EasySet is Licensed on a per System basis. This license will activate the use of EasySet for all Keysets and users associated with the system.

EasySet Screen



Samsung Telecommunications America
Business Communications Systems
1301 East Lookout Drive
Richardson, TX 75082

Samsung OfficeServ Applications Suite Product Release

OFFICESERV CALL GENERAL DESCRIPTION

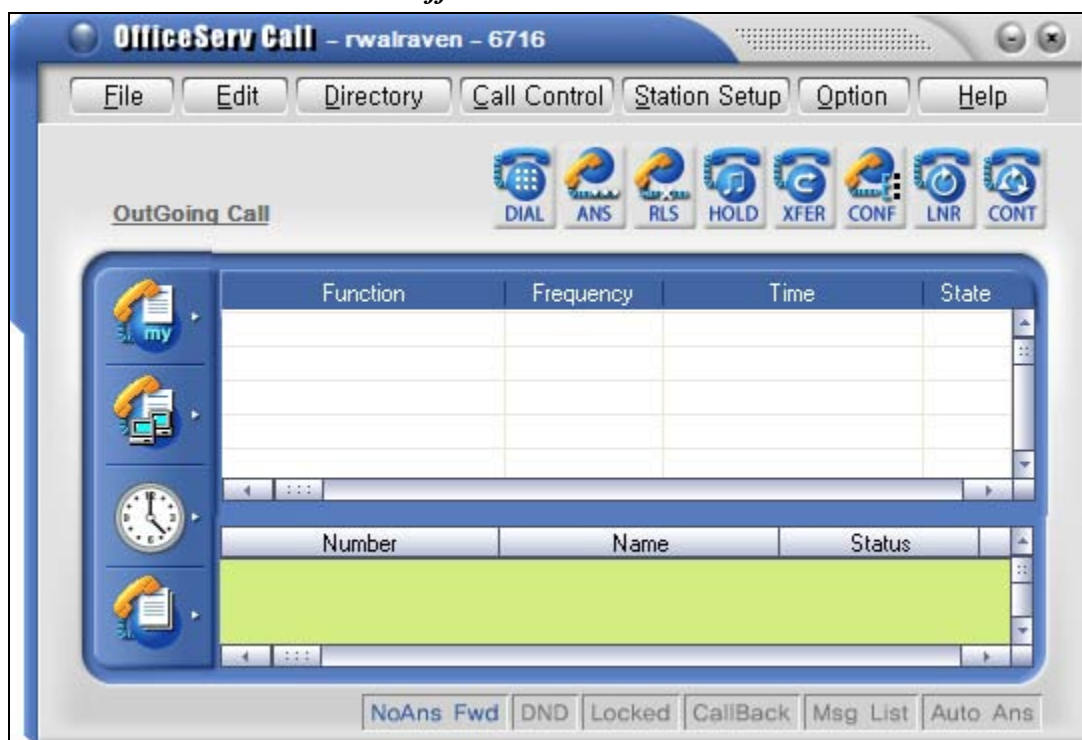
OfficeServ Call is a call manager application that supports contact management, scheduling, and call logging.

This application provides Samsung iDCS users with a simple way to manage incoming and outgoing calls. It offers the ability to link to personal databases to store contact names, details, and personal call history.

It also provides a number of simple management tools that provide Samsung iDCS telephone users a simple and friendly way to use the advanced features of their Keyset on a day-to-day basis.

OfficeServ Call is a software application that is loaded on each individual's computer that needs Call Management capabilities with an associated iDCS Keyset. An OfficeServ Call Client License is required for each Call Client that is connected to the iDCS system.

OfficeServ Call Screen



Samsung Telecommunications America
Business Communications Systems
1301 East Lookout Drive
Richardson, TX 75082

Samsung OfficeServ Applications Suite Product Release

OFFICESERV OPERATOR GENERAL DESCRIPTION

OfficeServ Operator is a Windows-based operator's console for the Samsung iDCS range of products.

It provides a complete call control facility for operators and reception staff within the company and provides an easy-to-use and intuitive interface for handling calls.

Multiple operators can be installed in a single node system, and individual operators can manage the whole telephone system or individual work groups, if required.

OfficeServ Operator is a software application that is loaded on each individual's computer that needs advanced Call Management capabilities with an associated iDCS Keyset. An OfficeServ Operator Client License is required for each Operator Client that is connected to the iDCS system.

OfficeServ Operator Screen

OfficeServ Operator - 6716[Jane S.]

File Call Tools View Help

F2 Incoming Calls

CID	DID	Duration	Details
-----	-----	----------	---------

F3 Active Calls

CID	DID	State	Duration	Details
-----	-----	-------	----------	---------

F4 Held Calls

CID	DID	Duration	Note
-----	-----	----------	------

F5 Busy Lamp Fields

Caller Information: Name: _____ Company: _____ Title: _____ Tel No.: _____ Note: _____

Recently Forwarded To: 1: _____ 2: _____ 3: _____

Destination: _____

DID

Tel	Name	BLF
<input type="checkbox"/> 7227		
<input type="checkbox"/> 7235		
<input type="checkbox"/> 7294		
<input type="checkbox"/> 7302		
<input type="checkbox"/> 7304		
<input type="checkbox"/> 7312		
<input type="checkbox"/> 7313		
<input type="checkbox"/> 7317		
<input type="checkbox"/> 7321		
<input type="checkbox"/> 7354		
<input type="checkbox"/> 7365		
<input type="checkbox"/> 7367		
<input type="checkbox"/> 7375		
<input type="checkbox"/> 7396		
<input type="checkbox"/> 7397		
<input type="checkbox"/> 7840		
<input type="checkbox"/> 9		

Tel No.	Name	Note
[3257] DCS Line 3257	[3279] DCS Line 3279	[3334] DCS Line 3334
[3258] DCS Line 3258	[3280] DCS Line 3280	[3335] DCS Line 3335
[3259] DCS Line 3259	[3281] DCS Line 3281	[3336] DCS Line 3336
[3260] DCS Line 3260	[3282] DCS Line 3282	[3337] DCS Line 3337
[3261] DCS Line 3261	[3283] DCS Line 3283	[3338] DCS Line 3338
[3262] DCS Line 3262	[3284] DCS Line 3284	[3339] DCS Line 3339
[3263] DCS Line 3263	[3285] DCS Line 3285	[3340] DCS Line 3340
[3264] DCS Line 3264	[3286] DCS Line 3286	[3341] DCS Line 3341
[3265] DCS Line 3265	[3287] DCS Line 3287	[3342] DCS Line 3342
[3266] DCS Line 3266	[3288] DCS Line 3288	[3343] DCS Line 3343
[3267] DCS Line 3267	[3289] DCS Line 3289	[3344] DCS Line 3344
[3268] DCS Line 3268	[3290] DCS Line 3290	[3345] DCS Line 3345
[3269] DCS Line 3269	[3291] DCS Line 3291	[3346] DCS Line 3346
[3270] DCS Line 3270	[3292] DCS Line 3292	[3347] DCS Line 3347
[3271] DCS Line 3271	[3293] DCS Line 3293	[3348] DCS Line 3348
[3272] DCS Line 3272	[3294] DCS Line 3294	[3349] DCS Line 3349
[3273] DCS Line 3273	[3295] DCS Line 3295	[3350] DCS Line 3350
[3274] DCS Line 3274	[3296] DCS Line 3296	[3351] DCS Line 3351
[3275] DCS Line 3275	[3297] DCS Line 3297	[3352] DCS Line 3352
[3276] DCS Line 3276	[3298] DCS Line 3298	[3353] DCS Line 3353
[3277] DCS Line 3277	[3299] DCS Line 3299	[3354] DCS Line 3354
[3278] DCS Line 3278	[3300] DCS Line 3300	[3355] DCS Line 3355

Done

DND OFF [AVAIL] [CRL]

Samsung Telecommunications America
Business Communications Systems
1301 East Lookout Drive
Richardson, TX 75082

Samsung OfficeServ Applications Suite Product Release

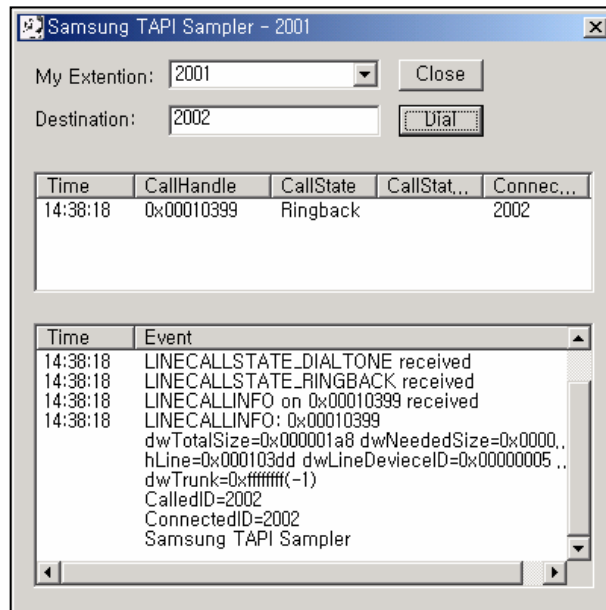
OFFICESERV OPEN TSP GENERAL DESCRIPTION

OpenTSP connects to the Samsung iDCS Telephone System through the OfficeServ Link software and provides a TAPI data stream that can be used by third party software vendors for application development.

The key features are as follows:

- Microsoft TAPI compliant Telephony Service Provider
- Open TSP is supplied with advanced test and debug tools to assist in the development and implementation of Third Party applications.
- Open TSP works together with Samsung OfficeServ applications connected to the same OfficeServ Telephone System.

OfficeServ OpenTSP Sampler Screen



Contact Samsung Professionals Services for information and specific details on the Licensing and ordering of OfficeServ OpenTSP.

Samsung Telecommunications America
Business Communications Systems
1301 East Lookout Drive
Richardson, TX 75082

Samsung OfficeServ Applications Suite Product Release

OFFICESERV APPLICATION SUITE—TECHNICAL REQUIREMENTS

iDCS Key Telephone Requirements

The following table identifies the minimum connection and software requirements needed to connect the OfficeServ Link to the iDCS family of Key Telephone Systems.

iDCS System	Minimum Software Version	Connection Type
iDCS 100/500 R1, iDCS 100LE	Not Supported	Not supported
iDCS 500 R2	2.4x or higher	MCP2 LAN Interface
iDCS 100 R2	2.4x or higher	SMCP1 LAN Interface

OfficeServ Link Gateway PC Requirements

- Microsoft Windows 2000 (Service Pack 2 or higher), Windows XP (Service Pack 1 or higher) Operating System Software
- Pentium 4 1.6Ghz (or higher) Microprocessor
- 512Mb (or higher) RAM
- 20Gb (or larger) Hard Disk Drive
- CD-ROM
- 10/100 Network Interface Card (NIC)
- Standard VGA Monitor, Keyboard, and Mouse
- TCP/IP Configuration

ORDER AND LICENSE

OfficeServ Applications require a License Key. The License Key is generated based on the iDCS system MCP MAC address.

When ordering OfficeServ Applications, you must complete the License request form included on the OfficeServ Applications CD or download a copy from the Samsung E-Business web site (<http://ebiz.samsungusa.com/>).

Contact your Regional Sales Manager for further information on specific details for ordering the OfficeServ Applications License Key.

Samsung Telecommunications America
Business Communications Systems
1301 East Lookout Drive
Richardson, TX 75082

Samsung OfficeServ Applications Suite Product Release

SOFTWARE AND DOCUMENTATION

All OfficeServ Application software (Link, EasySet, Call, Operator, and Softphone) and documentation are available on a CD (Part Number: OS-APPSCD) for ordering through Customer Service.

You can also download the product documentation and software from the Samsung eCommerce web site. Please note that if you have a slow Internet connection, we highly recommend you order the CD (OS-APPSCD).

A printed copy of the General Description and User Manuals is available for ordering from the Samsung FedEx Kinko's website (<https://psg.kinkos.com/samsung/>). If you have questions regarding the FedEx Kinko's web site or how to access this site, contact Samsung Customer Service.

TRAINING / CERTIFICATION

Contact your local RSM to find out the latest training and certification requirements for OfficeServ CTI applications.

Microsoft and Windows are either registered trademarks or trademarks of Microsoft Corporation in the USA and/or other countries.

Samsung Telecommunications America
Business Communications Systems
1301 East Lookout Drive
Richardson, TX 75082

Samsung OfficeServ Applications Suite Product Release

License Request Form

☐ **New License**

☐ **Additional Licenses**

Date of Request

DEALER INFORMATION

1	Company Name	
2	Dealer ID Number	
3	Telephone Number	
4	License Delivery Email Address	
5	Invoice / PO #	
6	Individual Requesting License	

SITE INFORMATION (CUSTOMER LOCATION)

7	Name	
8	Address	
9	City & State	
10	Zip Code	
11	Telephone Number	
12	Email Address	
13	Contact Name	
14	Phone System Type	
15	Date Originally Installed	
16	Number of Trunks	
17	Number of Stations	
18	MAC Address of Phone System	
19	MAC Address of the SVMi	
20	Type of Business	

LICENSE INFORMATION

	Application	License Method	Number of Seats
21	OfficeServ Link	Required for any OfficeServ application.	<input checked="" type="checkbox"/> Used
22	OfficeServ EasySet	All or none, enter USED or NOT USED.	<input checked="" type="checkbox"/> Used <input type="checkbox"/> Not Used
23	OfficeServ Call	Enter number of seats required	0
24	OfficeServ Operator	Enter number of seats required	0
25	OfficeServ SoftPhone	Enter number of seats required	0
26	OfficeServ Open TSP	Enter number of TSP links required	0
27	SVMi E-Mail Gateway	Select license option	<input type="checkbox"/> Unlimited

NOTE: If ordering OfficeServ licenses and an E-Mail Gateway license in the same form, you will receive two license keys. E-Mail Gateway license keys are entered in the SVMi's System Wide Parameters.

Samsung Telecommunications America
Business Communications Systems
1301 East Lookout Drive
Richardson, TX 75082