



Bulletin No.: 126_OSM

April 4, 2005

Latest Version of OfficeServ™ Manager

Samsung Telecommunications America is pleased to announce the latest version of OfficeServ™ Manager, Samsung's new PC-based remote access and database management tool for Samsung phone systems. The new and improved version of OfficeServ Manager (OSM) is more flexible, faster and user friendly than previous versions.

The new OfficeServ Manager launch pad and system file modules are enhanced to fix bugs and improve functionality of the OSM application. The new versions are as follows:

| Program Name | Version(date) | Status |
|-----------------------|--------------------------|---------------|
| OSM Launch Pad | 1.03 (2005.03.29) | NEW |
| OSM_100 R1 | 3.03 (2004.10.08) | Existing |
| OSM_100 R2 | 1.04 (2005.02.23) | NEW |
| OSM_500 R1 | 3.03 (2004.11.08) | Existing |
| OSM_500 R2 | 3.07 (2005.02.23) | NEW |
| OSM_16 R1&R2 | 3.03 (2005.01.24) | Existing |

Availability of OfficeServ Manager

The OfficeServ Manager software is available on CD-ROM (**OSM-CD**) through Customer Service using normal ordering procedures. All the iDCS phone systems require OfficeServ Manager for PC programming. There is no PCMMC version for iDCS 16/500/100.

When to Begin Using OfficeServ Manager

The iDCS product line requires installation of the OfficeServ Manager application prior to PC-based programming.

Check the versions of OSM files you currently have against the above table. To update outdated OSM files, choose one of the following upgrade options:

1. Access the E-Commerce web site and download the latest OSM software, or
2. Order the latest OSM-CD listed above.

Note: Uninstall the current version of OSM before you install the new OSM Launch Pad 1.03.

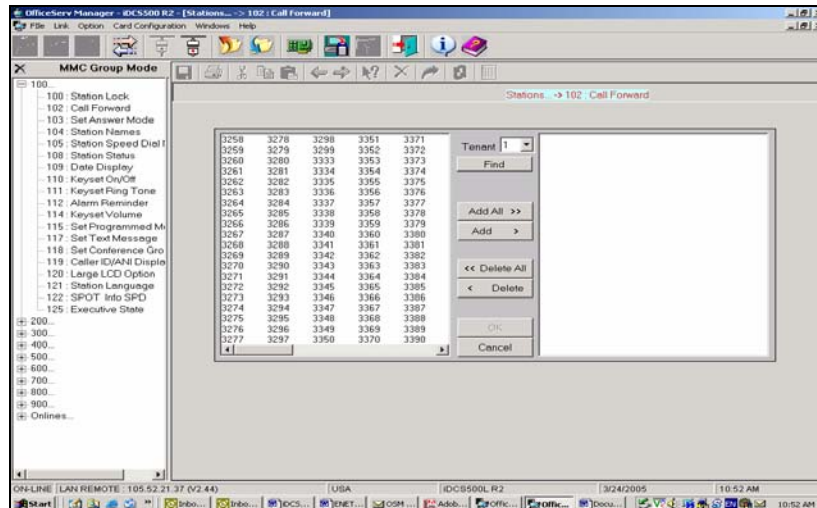
Samsung Telecommunications America
Business Communications Systems
1301 East Lookout Drive
Richardson, TX 75082

Latest Version of OfficeServ™ Manager

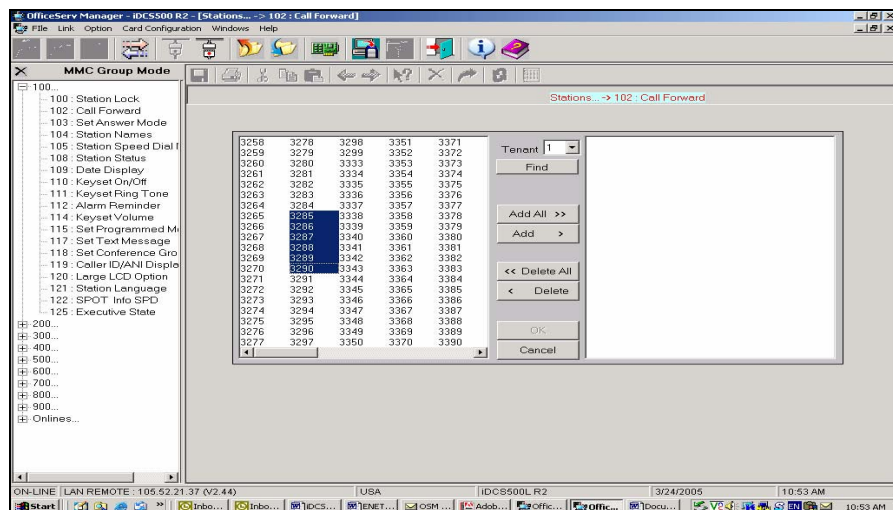
WHAT'S NEW WITH LATEST FILE SYSTEM MODULE?

1) New Selection Window

In addition to enhanced OSM overall functionality, a new user interface is added onto the front end of several of the MMCs. The new front end interface window provides easy programming, changes to extensions and trunks. When selecting some of the MMCs, the following interface window appears:



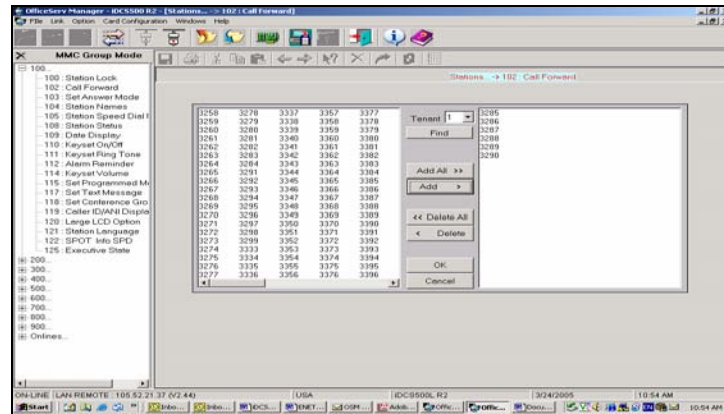
This new window provides the enhanced option to select one, multiple, or all extensions/trunks. Programming only one or just a few extensions/trunks decreases the database load time. This option was not available in the previous version.



Samsung Telecommunications America
Business Communications Systems
1301 East Lookout Drive
Richardson, TX 75082

Latest Version of OfficeServ™ Manager

This new front end does not apply to all MMCs. The new window displays only for MMCs associated with programming extensions or trunks. For example, MMC 104 Call forwarding. Highlighting and adding only a few extensions instead of selecting all loads the MMC database much faster than previous versions, which automatically loaded all extension/trunk data and slowed down the MMC database load.



After selecting the extension/trunks from the left window and adding the selection(s) to the right side window, click the O.K. button. The next MMC window looks and operates the same as prior versions of OSM/PCMMC.

2) Using new OSM to convert R1 databases to R2 systems

OSM has a database conversion tool to convert customers 500/100 R1 databases to R2 databases during a 500/100 R2 system upgrade. Enhancements make the database conversion more transparent. Almost all MMCs will convert from R1 data to R2 data with the exception of a few MMCs. Some MMCs will not convert completely because of the differences in the database structures between R1 and R2 operating systems. Note that when using OSM to convert from R1 to R2, the following MMCs will not convert:

102: Call forwarding (Call forward settings to external numbers will not convert)

304 : Assign Extension/Trunk Use

314 : Station to Station Use

736 : Assign AA MOH

804: Sys I/O Ports

831 : MGI Parameters

832 : VoIP Access Code

833 : VoIP IP Address

834 : H.323 Options

835 : MGI DSP Option

836 : H.323 GK Option

Note: These MMCs will return to default and will have to be re-entered by the technician when converting an R1 database to an R2 database.

Samsung Telecommunications America
Business Communications Systems
1301 East Lookout Drive
Richardson, TX 75082

Latest Version of OfficeServ™ Manager

3) OSM Combining Related MMCs

For added convenience, the new version of OSM combines some of the MMC selections into a single selection from the MMC window. For KMMC (keyset programming), the MMC displays as individual selections. However, the new OSM user interface combines the following MMC selections:

- **MMC 602 (Station Group Name) is combined with MMC 601 (Station Group)**
- **MMC 116 (Alarm Reminder) is combined with MMC 112 (Alarm Clock)**
- **MMC 706 (System Speed dial name) is combined with MMC 705 (System Speed Dial)**
- **MMC 815 (Customer Database) is combined with MMC 860 (UCD View)**
- **MMC 861 (System Options) is combined with MMC 860 (UCD View)**
- **MMC 855 (System Options) is combined with MMC 850 (System Resource)**

This OSM change was made for convenience. By combining certain MMCs into one selection, the OSM application is easier to use and navigate through related MMCs.

For questions regarding this notice, contact your Regional Sales Manager or your Customer Service Representative at the number provided below or via email at BCS.Sales@samsung.com.