



Bulletin No.: 112_DS616R2

June 10, 2004

DS 616 Release 2 General Availability

Samsung Telecommunications America is pleased to introduce the new DS 616 Release 2 KSU. The KSU 2 has been designed to provide additional value and flexibility to Samsung's small Key System product. The DS 616 Release 1 KSU will be discontinued and replaced with the new KSU 2. The Release 2 KSU will be available for ordering and shipping from Samsung on June 10, 2004. The new version of Release 2 software is T2.02 (04.03.04). Samsung would like to express our sincere thanks to those dealers who assisted with Field Trials.

iDCS KEYSETS

The new DS 616 KSU 2 now supports iDCS keysets. This enhancement provides small business customers more options when choosing the digital telephones best suited for their needs. The KSU 2 supports the original DS 24D Keysets, along with the iDCS 8, 18, and 28 Button keysets. In addition the 14-Button Add-On-Module can be added to the iDCS 18 D or 28 D iDCS Keysets and function with the DS 616 KSU 2. The 64-Button Add-On-Module is not supported by the DS 616. The Full-Duplex Speakerphone module is supported; however, the KDB's (SLI or DLI) are not supported. The DS 24D and other iDCS Keysets can be mixed and used interchangeably within the same system. The following matrix points out the differences between the current DS 616 and the enhancements to the new DS 616 KSU 2.

DS 616 COMPARISON MATRIX

	DS 616 KSU Release 1	DS 616 KSU2 Release 2
DS 24 D	✓	✓
iDCS 28-Button	-	✓
iDCS 18-Button	-	✓
iDCS 8-Button	-	✓
iDCS 14-Button AOM	-	✓
iDCS 64-Button AOM	-	-
Single Line Telephone (SLT) support	✓	✓
SLT with Caller ID	-	✓
iDCS KDb-s (SLT)	-	-
iDCS KDb-d (DLI)	-	-
iDCS Kdb-f (Full-duplex speakerphone)	-	✓
SVM 400	✓	✓

Samsung Telecommunications America
Business Communications Systems
1301 East Lookout Drive
Richardson, TX 75082

DS 616 General Availability

	DS 616 KSU Release 1	DS 616 KSU2 Release 2
SVM 400E (Future Release)	✓	✓
SVMi-2E	-	✓
SIO2	✓	✓
SIO3	-	✓
System Software Version	1.03 (03.06.26)	T2.02 (04.03.04)

CALLER ID TO SINGLE LINE TELEPHONE PORTS

The DS 616 KSU 2 provides Caller ID (CID) Name and/or Number on internal and CO calls to all four single line telephone ports. Dealers can now provide a mobility solution to customers using cordless telephones that offers the convenience of receiving Caller ID (Name and/or Number) information during ringing conditions.

The new SIO3 daughterboard will provide Caller ID capability to the SLI (FSK to Single-line) ports. This CID capability provides the Name and/or Number of the calling party and also provides station ID information from internal stations. When an outside line is transferred to a Single Line Telephone, the CID information is also transferred.

Note: *Caller ID services from the Telco, along with the SIO3 card is required.*

SVMi-2E INTEGRATED VOICE PROCESSING (IN-SKIN)

The new DS616 KSU 2 motherboard has an additional connector for the SVMi-2E voice processing card to be installed in the option slot. The SVMi-2E has been designed to replace the SVM-400, at a more economical price. The SVMi-2E includes the same features and functionality as the other SVMi E-Series products, although the SVMi-2E does not support all features available on the SVMi-16E, including but not limited to LAN Connection, Fax, Modem and AudioTex.

The SVMi-2E is a proprietary four port voice processing system. It comes standard with two ports and can be expanded to four ports through the use of an i-Button.

Note: *The SVMi-2E i-Button is different part number than the SVMi-4 i-Button and cannot be interchanged.*

When the SVMi-2E card is installed in the option slot of the KSU 2, the system will startup as a four port voicemail. When the i-Button is not present, ports 3 & 4 (default numbers 383 & 384) must be deleted from the Station Numbering Plan in MMC 724.

The SVMi-2E is an in-skin solution, and therefore does not require the use of digital station ports. Now, customers can grow to a maximum capacity of six lines and twelve digital stations, with four ports of voicemail.

Samsung Telecommunications America
Business Communications Systems
1301 East Lookout Drive
Richardson, TX 75082

DS 616 General Availability

The SVMi-2E offers dealers and customers the following advantages:

- Approximately 2.5 hours of storage capacity
- Two ports, expandable to four ports
 - Two ports (25 mailboxes)
 - Four ports (100 mailboxes)
- In-skin Integration (plugs into option slot of KSU).
- Voicemail and/or Automated Attendant
- DLI ports no longer required
- Multi-Language Support
 - 12 languages available
(Each language decreases message storage by 30 to 40 minutes)
 - English, French, and Spanish come standard.

For more details on the SVMi-2E, please refer to the SVMi-2E Product Bulletin No.: 113_SVMi-2E.

DOCUMENTATION

Supporting documentation has been created to explain in detail all the features and functionality available on the DS 616 KSU 2. Supporting documentation is available to Dealers through a variety of options.

1. Most of the supporting documents are available on the DS 616 Release 2 Technical Manual CD-ROM (LP621) which may be ordered using normal ordering procedure. You can also order directly from Samsung using the normal ordering procedures the DS 616 Release 2 Sales Brochure (SB-616R2), the SVMi-2E Voice Processing Platform Brochure (SB-SVMi-2E), and the SVM/SVMi E-Series Quick Reference Guide (LDV822).
2. Many of the supporting documents are available on the Samsung e-Commerce website <http://ebiz.samsungusa.com> under Sales and Marketing Support/Download Documents.
3. Another option is to order documents in printed format from a third party (Executive Printers, (305) 887-4333).

The following matrix will help to identify which supporting documents are available and by which methods they can be obtained:

DS 616 Release 2 Documents	CD	eCommerce	Samsung	Third Party
Technical Manual CD-ROM (LP621)	✓	-	✓	-
Technical Manual Printed	-	-	-	✓
General Description	✓	✓	-	✓
Sales Brochure (SB-616R2)	-	✓	✓	-
SVMi-2E Sales Brochure (SB-SVMi2E)	-	✓	✓	-

Samsung Telecommunications America
Business Communications Systems
1301 East Lookout Drive
Richardson, TX 75082

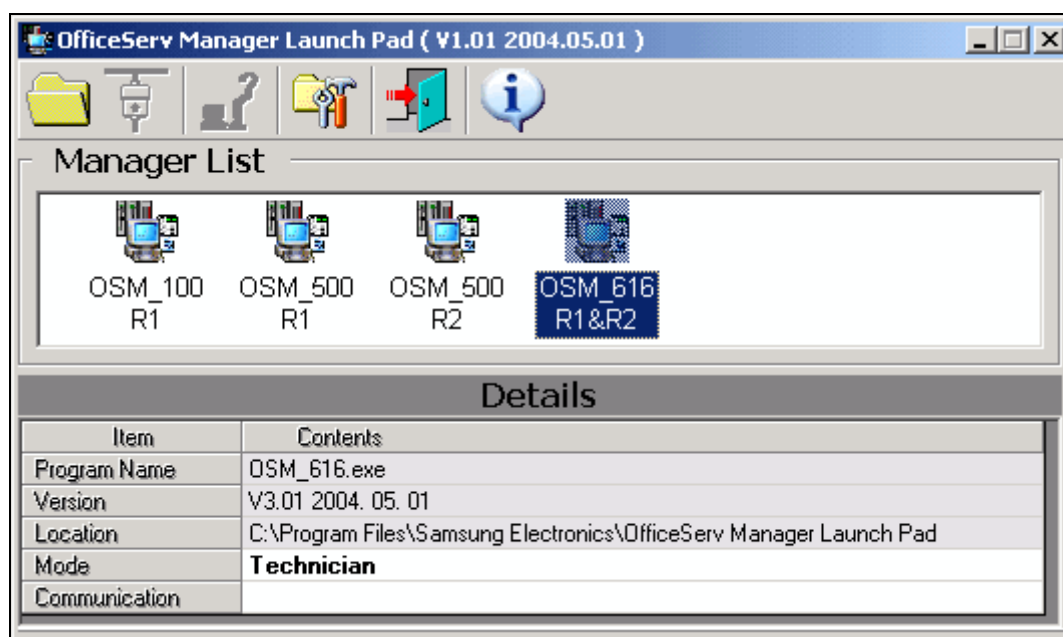
DS 616 General Availability

DS 616 Release 2 Documents	CD	eCommerce	Samsung	Third Party
DS 24D Keypad User Guide	✓	✓	-	✓
iDCS Keypad User Guide	✓	✓	-	✓
Standard Telephone User Guide	✓	✓	-	✓
System Administration & Special Features Guide	✓	✓	-	✓
Auto Attendant Administration Guide	✓	✓	-	✓
SVM/SVMi E-Series Quick Reference Guide (LDV822)	✓	✓	✓	-
SVM 400 User Guide	✓	✓	-	✓
SVM 400 Programming Manual	✓	-	-	✓
OfficeServ Manager (OSM) Application Program	✓	-	-	-

Please go to the eCommerce web site or contact our contact Samsung Customer Service for further details.

PC PROGRAMMING (LOCAL AND REMOTE)

The PCMMC program used on the DS 616 Release 1 system has been replaced by a much improved application program called OfficeServ Manager (OSM) Launch Pad (V1.01 2004.05.01). This windows-based Launch Pad is the platform used to select a specified OSM module required for the particular system to be locally or remotely programmed. (See screen below).



Samsung Telecommunications America
Business Communications Systems
1301 East Lookout Drive
Richardson, TX 75082

DS 616 General Availability

Note: The OfficeServ Manager 616 system file has a different version number than the Launch Pad application.

When using OSM_616 R1 & R2 version 3.01, some MMCs may be displayed on the PC screen that do not apply to the version of software running on the DS 616 system. These MMC entries are reserved for future use. When this occurs, an error message “NO CORRESPONDING DATA” will appear on the PC screen. Ignore the message and go on to the next function.

For more details on the OfficeServ Manager Application, please refer to the OfficeServ Manager Product Bulletin No.: 114_OSM.

DS 616 RELEASE 2 TRAINING

All dealers who are certified on the ‘DS 616/SVM 400’ products will be grandfathered and authorized to sell the DS 616 Release 2. When available, a Transition Certification Test will be offered to upgrade from the ‘DS 616/SVM 400’ to the ‘DS 616 R2’ certification. There will be a time limit of 6 months from the time the Transition Certification Test becomes available for dealers to upgrade their certification status to the ‘DS 616 R2’.

Dealers who are not certified may become certified by attending the Samsung iDCS Basic Plus course or via a correspondence course available through the Training Group. For additional information, please contact the Training group at BCS.Training@samsung.com, or visit the Training area on the eCommerce web site for a Course Description and Class schedule.

If you have any questions regarding this Product Bulletin, please contact your Regional Sales Manager, Customer Service Representative, at the number provided below, or send email to BCS.Sales@samsung.com.

Samsung Telecommunications America
Business Communications Systems
1301 East Lookout Drive
Richardson, TX 75082