



## Using a Station Block to Control the Ring Time of External Calls

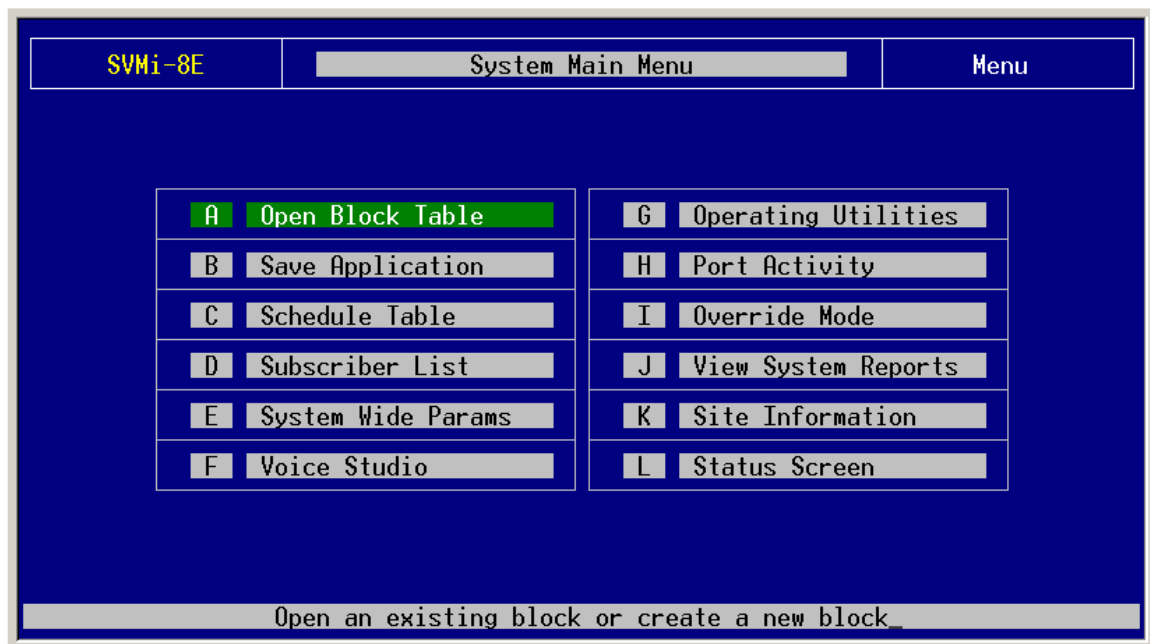
### SVMi Application 6

January 6, 2006

This document covers the process of adjusting the time that an incoming caller will ring an external phone number before being pulled back to the SVMi.

**Note:** This only pertains to when an incoming call is being sent from the SVMi under a **Supervised Transfer** condition.

1. From the **System Main Menu** of the SVMi, highlight **Open Block Table** and press the <enter> key.



2. After pressing <enter> the **Open Block** screen will be displayed.

SVMi-16E	OPEN Block	Target Gen
----------	------------	------------

BLOCK Label....	
Announcemnt AudiotexLib Bye Dial Directory DocumentLib Eclass Extension Fax List Mailbox Mclass Menu Mode Net Mailbox Port	

Highlight desired object type and press ENTER to select

3. Using the up and down arrow keys select the **Station Block** and then press the <enter> key. Use the up and down arrow keys to select the **Off Premise Block** and then press the <enter> key.

SVMi-8E	OPEN Block	Target Gen
---------	------------	------------

BLOCK Label.... STN	
Dial Directory DocumentLib Eclass Extension Fax List Mailbox Mclass Menu Mode Net Mailbox Port Query Speak Station	NEW Beepers Centrex Transfer Off Premise On Premise TEMPLATE STN

Highlight the desired object and press ENTER to select

4. From page 1 of the **Off Premise Block** press **Ctrl+D** to get to page 2.

<b>SVMi-8E</b>	<b>STATION - Off Premise</b>	Page 1 of 4
----------------	------------------------------	-------------

Matching Dial Strings		
???????	??????????	????????????

<b>Prefix and Suffix</b> Prefix: 9, Suffix:	<b>Message Waiting Indicator Controls</b> Dial to set MWI on.. Dial to set MWI off:
<b>Transfer Controls</b> Simultaneous xfers.... N Conference calls..... N Internal station..... N Monitor transfers..... N	<b>Call Progress Training</b> Ringing number: 5 Busy number.... 5 Train      Retrain      Reset

Block Name. To Rename, Type new name then Press Enter

5. In the **Rings for no answer** field adjust the value to fit the customers ringing needs.

<b>SVMi-16E</b>	<b>STATION - Off Premise</b>	Page 2 of 4
-----------------	------------------------------	-------------

<b>Time Delay</b> Before listening..... 75 Before testing loop.... 400 After loop current drop: 10	<b>Answer Detection</b> Max Size of "Hello".... 1000 "Hello" filter duration: 0 Leading or trailing edge.. 1
<b>Ring and Busy Counts</b> Initial sounds ignored.. 1 Rings for no answer..... 4 Busy cycles for busy.... 3	<b>Sound and Silence Filters</b> Sound filter duration... 19 Silence filter duration: 15
<b>Maximum Sound and Silence</b> Continuous noise..... 650 Continuous silence..... 3000	Sound tolerance above.. 13 % Sound tolerance below.. 13 % 1st silence tol. above: 13 % 1st silence tol. below: 13 % 2nd silence tol. above: 13 % 2nd silence tol. below: 13 %

**6.** Press **Cntr+E** to save the changes and exit. This completes all necessary programming for this application.

*If you have any questions about this or any other SVMi Application please contact Samsung Technical Support by phone at 1-800-737-7008 or by email at: [BCS.Support@Samsung.com](mailto:BCS.Support@Samsung.com)*