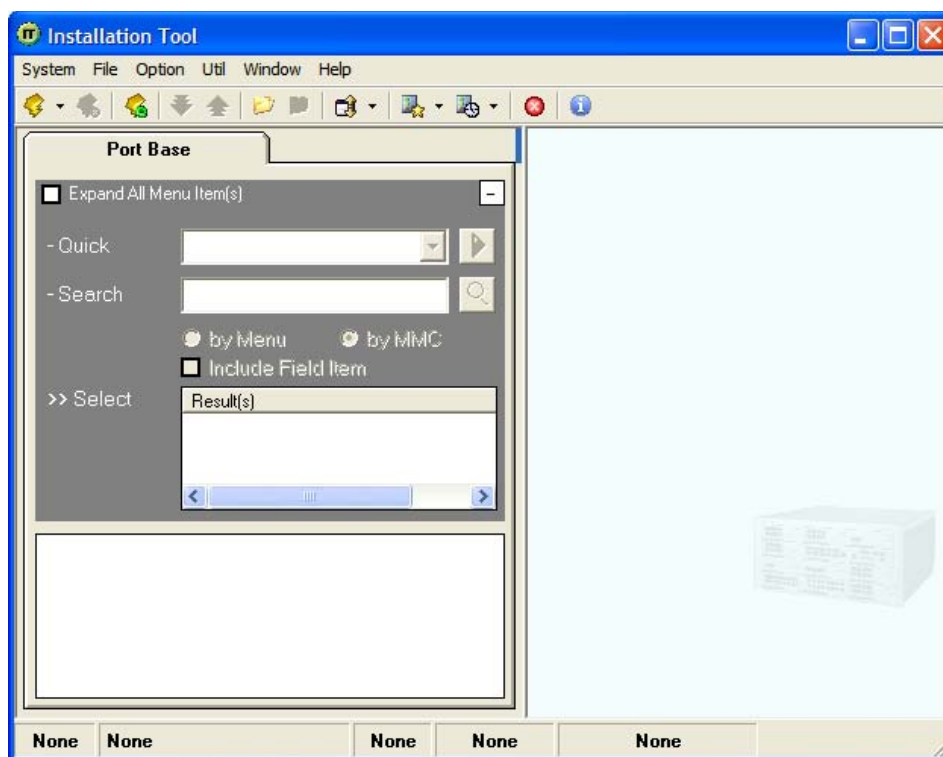


Bulletin No. 190_IS_Tool_1_30a

March 10, 2009

OfficeServ™ Installation Tool Version V1.30a General Availability

Samsung is pleased to announce the general availability of version V1.30a of the OfficeServ™ Installation Tool application. The new software may be downloaded from the GSBN website (Communication→Technical Support→Downloads→Released Software) or obtained from Samsung Technical Support on or after 03-10-2009. For assistance installing or upgrading to the newest version contact Samsung Technical Support at 800-737-7008.



Installation Tool Main Window

OfficeServ™ Installation Tool General Availability

NEW SOFTWARE ENHANCEMENTS

The following enhancements have been implemented in the latest version of Installation Tool:

- The Quick Connect feature allows you to connect to a system without the need to create a connection in the Link Control. This is useful for one-off sites that you may need to connect to once, but never again.
- The Quick File Control feature is similar to the Quick Connect feature, and allows you to view or edit Media Card contents without setting up a connection in the Link Control.
- Support added for MP10a processor card.

BUG FIXES

In addition to the software enhancements the V1.30a software includes the following bug fixes:

- There was an issue where Network Paging (NPG) keys could not be set through the Installation Tool. This issue has been corrected.

DOCUMENTATION

The latest OfficeServ™ Installation Tool documentation, dated 03/2009, is located on Samsung's GSBN website www.samsunggsbn.com under Communication→Technical Support→Downloads → Technical Manuals →Installation Tool Version 1.30a Documentation.

If there are any questions regarding this notice or on any of the Installation Tool documentation please contact your Regional Sales Manager or Samsung Technical Support Representative via email at BCS.Support@samsung.com.